

ADIRONDACK ENVIRONMENTAL SERVICES

SAMPLE NUMBER

43 1016 0.1

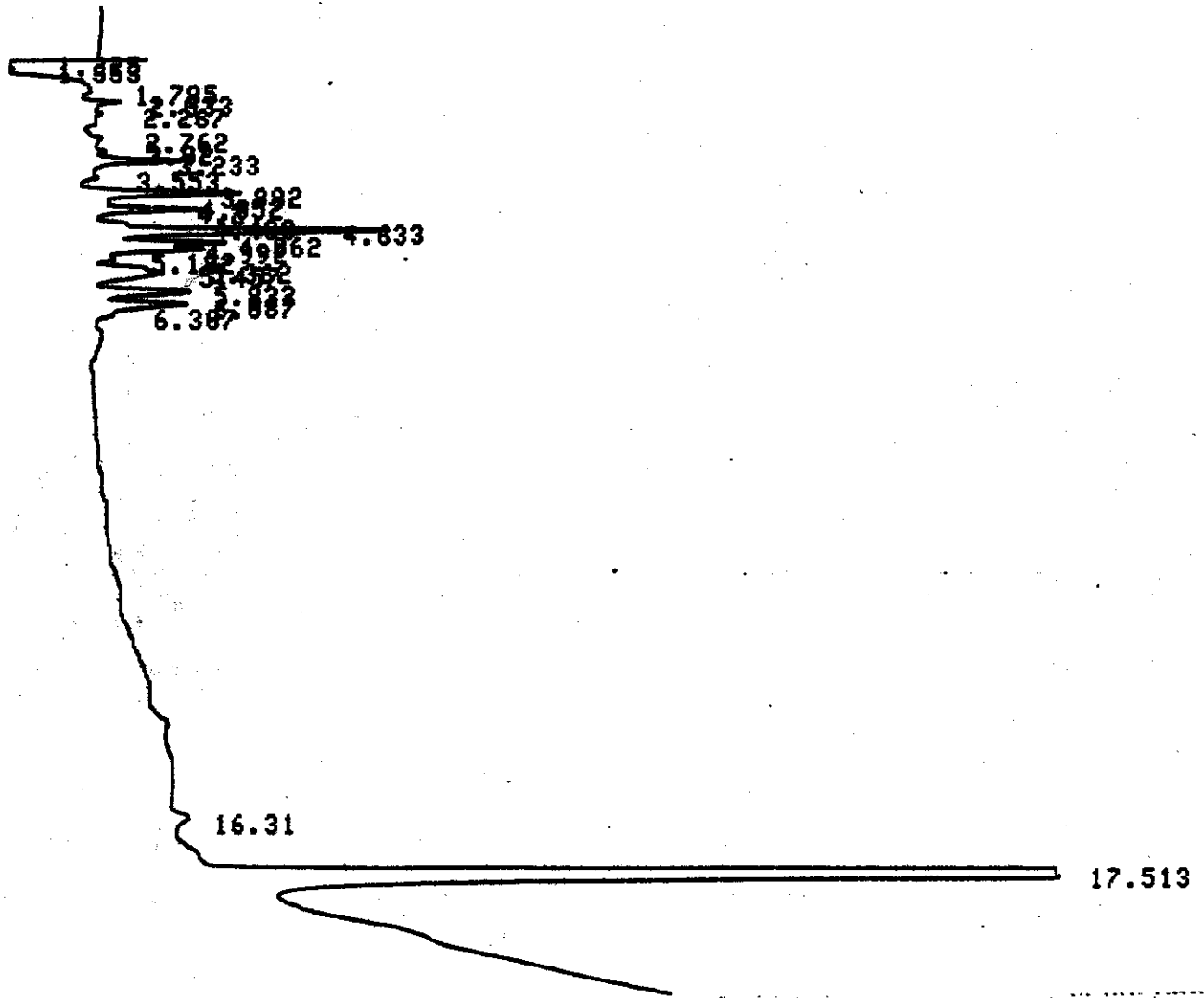
DATE 97/08/21

TIME 07:27:10 ATTN 2

VAR-5

START

START



CHROMATOGRAM 1 MEMORIZED

CHROMATOPAC CR681
SAMPLE NO 8
REPORT NO 961

FILE 8
METHOD 8841

PKNO	TIME	AREA	MK	IDNO	CONC	NAME
1	1.353	1657	V		0.7857	
2	1.785	9583	V		4.5451	
3	2.833	3285	V		1.5281	
4	3.233	3162	V		1.4996	
5	3.882	4918			2.3287	
6	4.2	3566	V		1.6914	
7	4.483	1163	V		0.5516	
8	4.633	9655	V		4.5789	
9	4.862	3986	V		1.8523	
10	4.992	3499	V		1.6594	
11	5.362	1486	V		0.6666	
12	5.457	3363	V		1.5948	
13	5.832	3792	V		1.7986	
14	6.887	3755	V		1.7889	
15	17.513	154229			73.1463	
<u>TOTAL</u>		218851			100	

CHROMATOGRAM 1 MEMORIZED

CHROMATOPAC CR601
 SAMPLE NO 8
 REPORT NO 962

FILE 8
 METHOD 0041

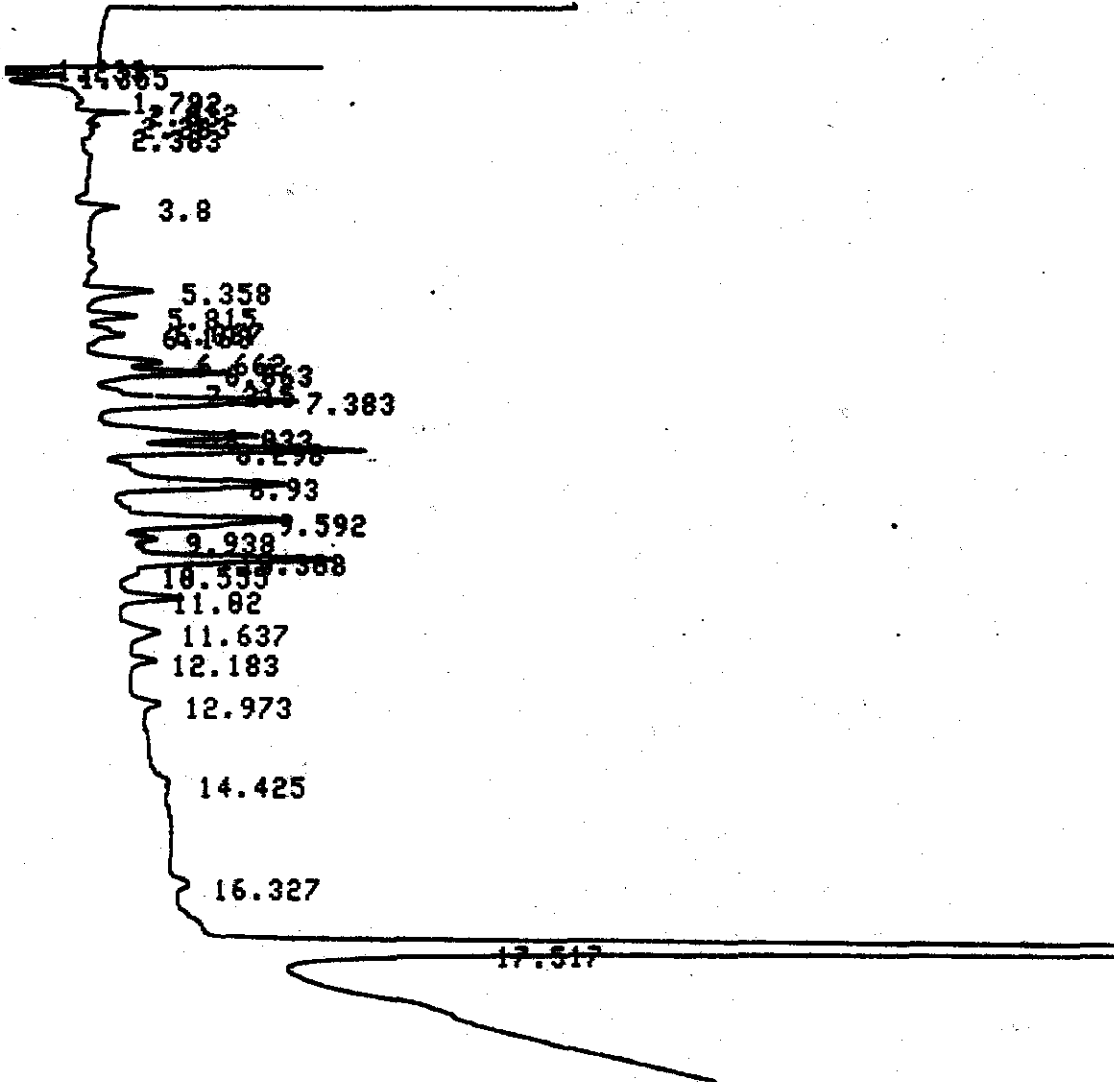
PKNO	TIME	AREA	MK	IDNO	CONC	NAME
1	1.237	1836			0.2971	
2	1.343	2858	V		0.8173	
3	1.785	11983	V		3.437	
4	2.028	11654	V		3.3428	
5	2.392	14587	V		4.184	
6	2.765	12684	V		3.6383	
7	3.022	4418	V		1.2673	
8	3.228	13444	V		3.856	
9	3.557	5489	V		1.5514	
10	3.883	12247	V		3.5128	
11	4.203	11395	V		3.2683	
12	4.633	17466	V		5.8898	
13	4.867	6724	V		1.9285	
14	4.997	6862	V		1.7387	
15	5.178	2977	V		0.8539	
16	5.458	11373	V		3.2622	
17	5.84	7481	V		2.1228	
18	6.09	7878	V		2.8278	
19	6.3	3157	V		0.9855	
20	6.788	13227	V		3.7938	
21	7.162	4978	V		1.4254	
22	7.393	3869	V		1.1896	
23	8.043	4814	V		1.3888	
24	8.295	1968	V		0.5646	
25	8.6	1133	V		0.3249	
26	8.92	1288	V		0.3466	
27	17.52	153515			44.8328	
TOTAL		348638			100	

UCC

ADIRONDACK ENVIRONMENTAL SERVICES

SAMPLE NUMBER 45 105401
DATE 97/08/21 TIME 08:15:13 ATTN 2
VAR-5

START



CHROMATOGRAM 1 MEMORIZED

CHROMATOPAC CR601
SAMPLE NO 0
REPORT NO 963

FILE 0
METHOD 0041

PKNO	TIME	AREA	MK	IDNO	CONC	NAME
1	1.355	2050			0.8287	
2	1.792	7547	V		3.0509	
3	2.032	3102	V		1.2541	
4	2.263	2081	V		0.8412	
5	2.383	1133	V		0.4579	
6	3.8	1007			0.4071	
7	5.358	2458			0.9937	
8	5.815	1553	V		0.6279	
9	6.168	1107	V		0.4476	
10	6.662	2688			1.0864	
11	6.863	4487	V		1.8139	
12	7.383	8150	V		3.2948	
13	8.033	7561	V		3.0566	
14	8.298	8471	V		3.4243	
15	8.93	10299	V		4.1632	
16	9.592	9568	V		3.8679	
17	9.938	1705	V		0.6894	
18	10.308	9391	V		3.7965	
19	11.02	2423	V		0.9794	
20	11.637	2071			0.8373	
21	12.183	1157	V		0.4676	
22	17.517	157363			63.6138	
TOTAL		247373			100	

069

ADIRONDACK ENVIRONMENTAL SERVICES

SAMPLE NUMBER

46 1260 0.1

DATE 97/08/21

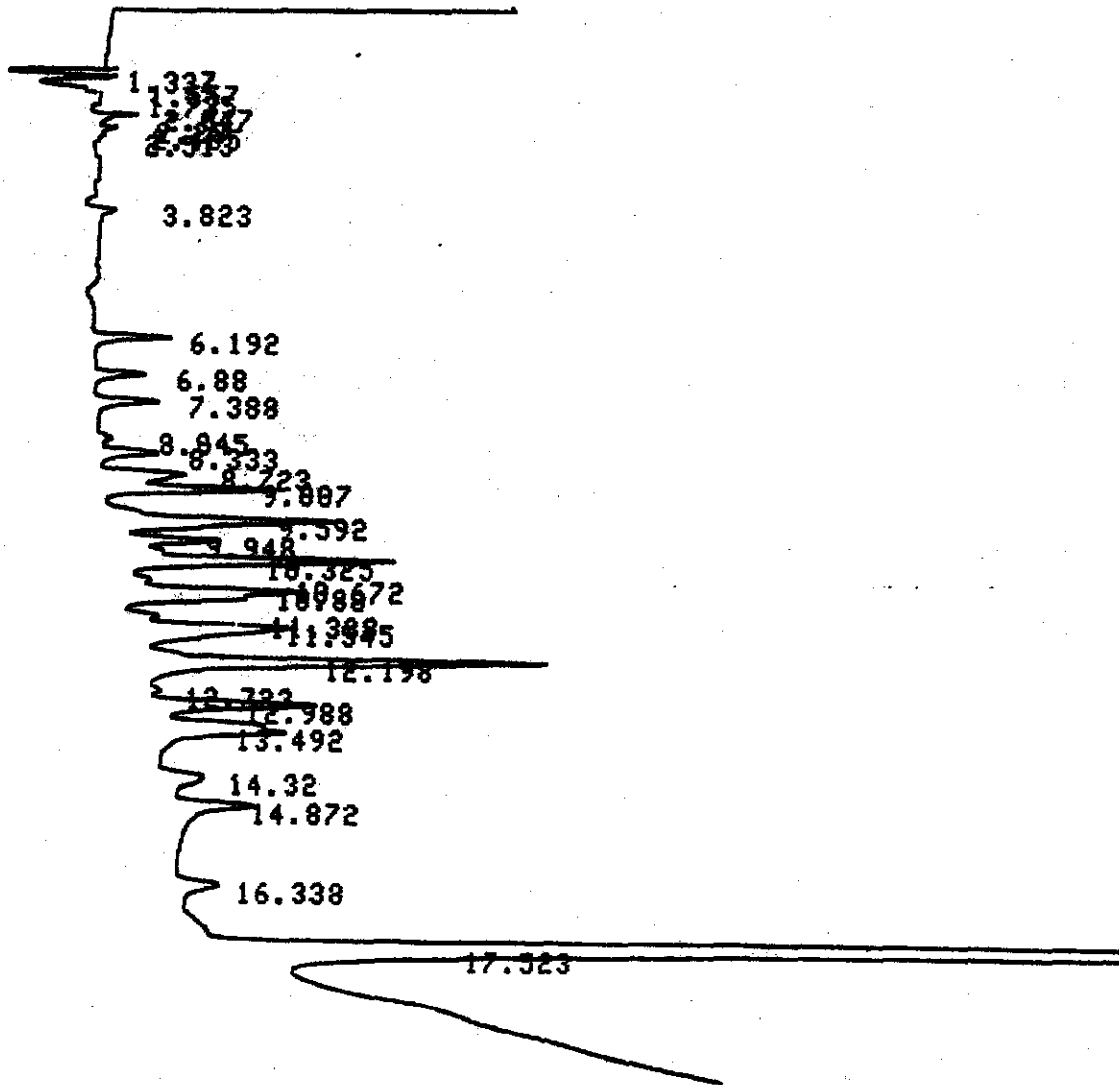
TIME 08:38:32

ATTN

2

VAR-5

START



CHROMATOGRAM 1 MEMORIZED

CHROMATOPAC CR601
 SAMPLE NO 8
 REPORT NO 964

FILE 8
 METHOD 0041

PKNO	TIME	AREA	MK	IDNO	CONC	NAME
1	1.337	7866			2.7401	
2	1.557	5183	V		1.7774	
3	1.735	9459	V		3.2949	
4	2.047	6362	V		2.2162	
5	2.28	1910	V		0.6654	
6	6.192	2028			0.7065	
7	6.88	1420			0.4946	
8	7.388	1749			0.6091	
9	8.333	1944			0.6773	
10	8.723	3785			1.3185	
11	9.007	5484	V		1.9104	
12	9.592	10363			3.61	
13	9.948	3526	V		1.2283	
14	10.325	11543	V		4.0200	
15	10.672	1204	V		0.4194	
16	10.88	9089	V		3.1661	
17	11.545	9359	V		3.2602	
18	12.198	16877	V		5.8789	
19	12.908	6644	V		2.3145	
20	13.492	8646	V		3.0116	
21	14.32	2105			0.7331	
22	14.872	4220	V		1.4701	
23	16.338	1740			0.6062	
24	17.523	154650			53.8702	
TOTAL		287078			100	

ADIRONDACK ENVIRONMENTAL SERVICES

SAMPLE NUMBER

47 MSB@ 0.1

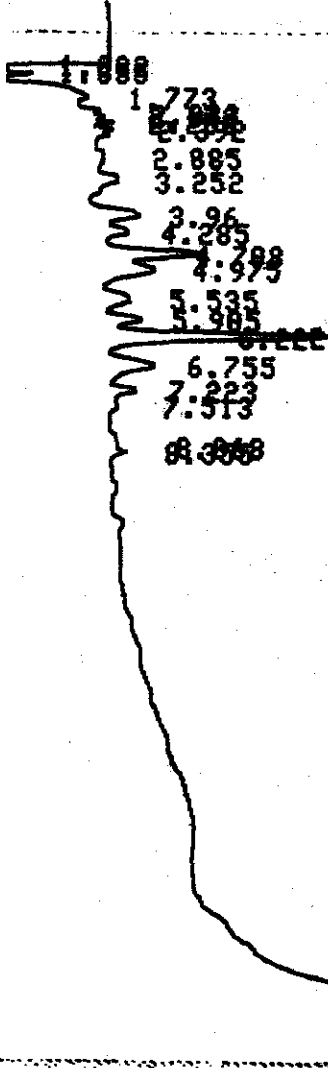
DATE 97/08/21

TIME 09:17:04 ATTN 2

VAR-5

START

690



CHROMATOGRAM 1 MEMORIZED

CHROMATOPAC CR601
SAMPLE NO 8
REPORT NO 965

FILE 8
METHOD 8841

PKNO	TIME	AREA	MK	IDNO	CONC	NAME
1	1.232	1188			0.5944	
2	1.355	4598	V		2.4627	
3	1.773	18781	V		10.8339	
4	2.033	8846	V		4.7463	
5	2.142	5317	V		2.8527	
6	2.253	5269	V		2.827	
7	2.392	12348	V		6.6255	
8	2.885	18437	V		9.8923	
9	3.252	21957	V		11.7813	
10	3.96	14883	V		7.9857	
11	4.285	9964	V		5.3463	
12	4.788	14255	V		7.6488	
13	4.975	12982	V		6.9227	
14	5.535	9293	V		4.9865	
15	5.985	5492	V		2.9466	
16	6.222	14137	V		7.5852	
17	6.755	6882	V		3.6925	
18	7.223	1994	V		1.8698	
TOTAL		186374			100	

ADIRONDACK ENVIRONMENTAL SERVICES

SAMPLE NUMBER

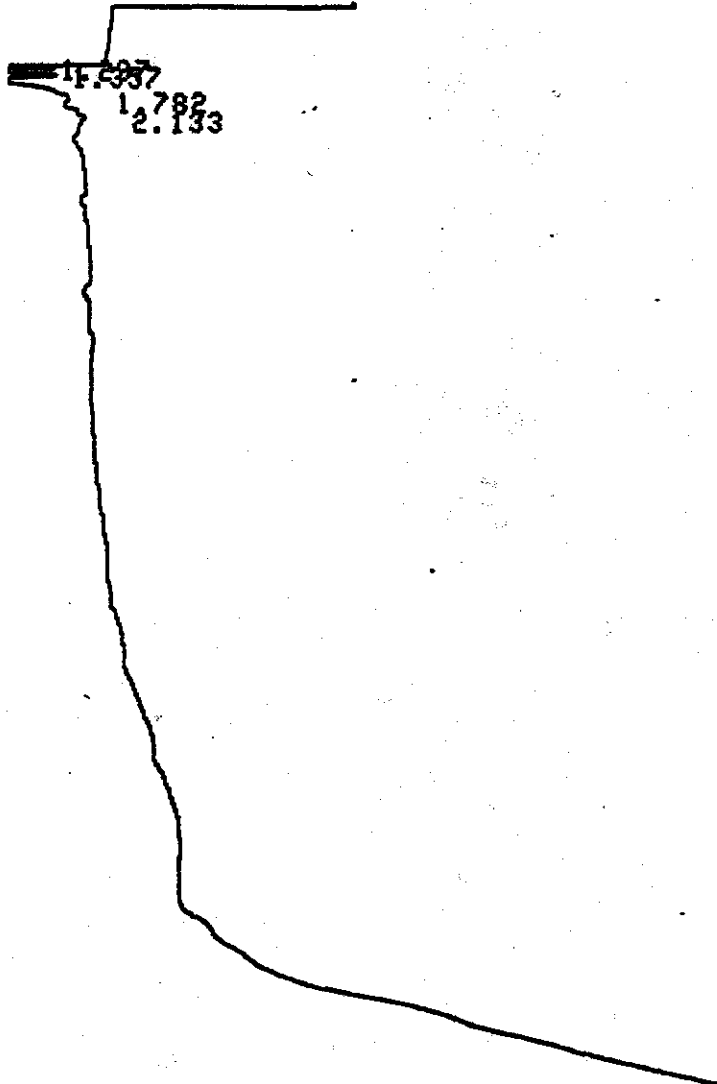
48 919 ECI

DATE 97/08/21

TIME 09:46:06 ATTN 2

VAR-5

START



CHROMATOGRAM 1 MEMORIZED

CHROMATOPAC CR601
 SAMPLE NO 0
 REPORT NO 966

FILE 0
 METHOD 0041

PKNO	TIME	AREA	HK	IDNO	CONC	NAME
1	1.237	1639			8.4247	
2	1.357	4742	V		24.3714	
3	1.782	9518	V		48.9179	
4	2.133	3558	V		18.2861	
TOTAL		19457			100	

ADIRONDACK ENVIRONMENTAL SERVICES

SAMPLE NUMBER

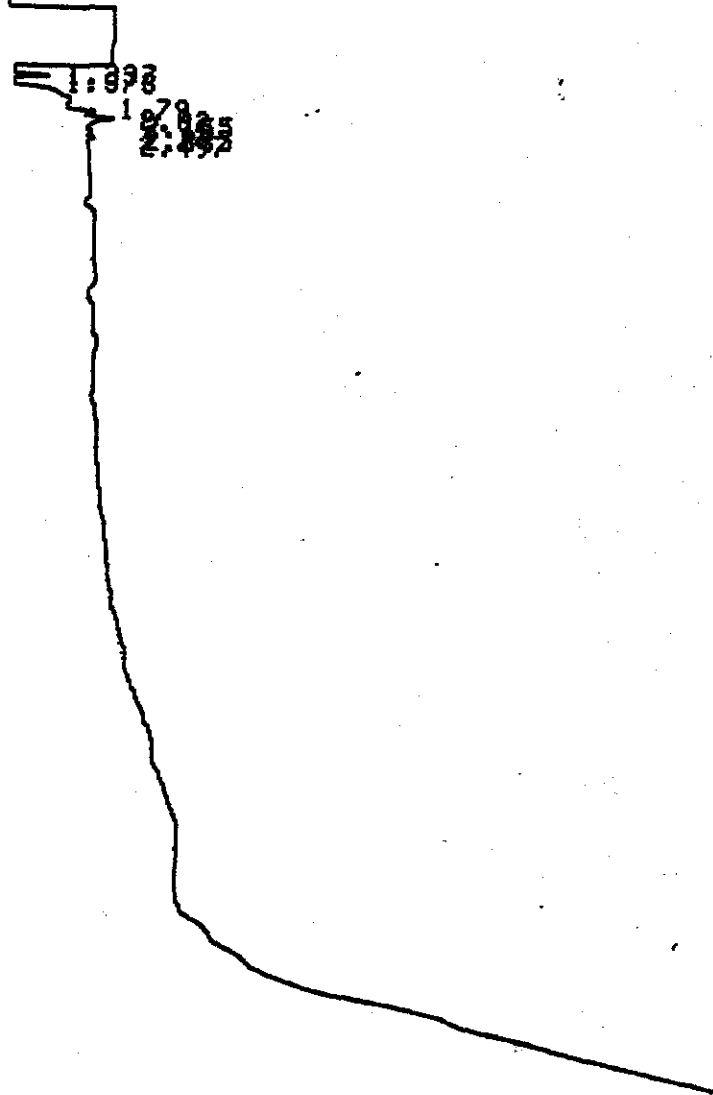
49 818EC2

DATE 97/08/21

TIME 10:09:33 ATTN 2

VAR-5

START



CHROMATOGRAM 1 MEMORIZED

CHROMATOPAC CR601

SAMPLE NO 0

FILE 0

REPORT NO 967

METHOD 0041

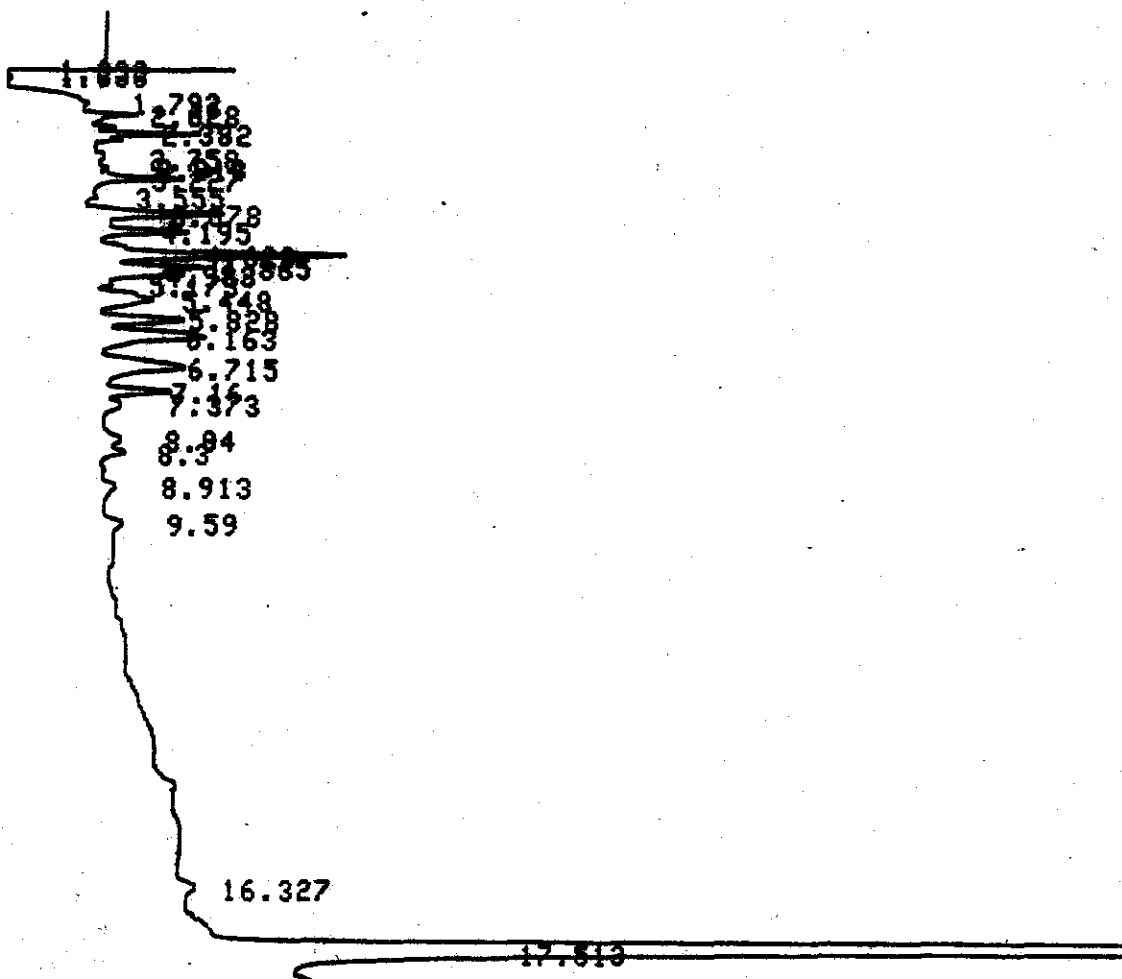
PKNO	TIME	AREA	MK	IDNO	CONC	NAME
1	1.237	1284			5.6988	
2	1.373	4898	Y		18.1945	
3	1.79	10054	Y		44.6361	
4	2.02	3531	Y		15.6748	
5	2.155	3558	Y		15.7957	
TOTAL		22524			100	

ADIRONDACK ENVIRONMENTAL SERVICES

SAMPLE NUMBER 50 1242 0-1
DATE 97/08/21 TIME 10:33:20 ATTN 2
VAR-5

START

START



012

CHROMATOGRAM 1 MEMORIZED

CHROMATOPAC CR601
 SAMPLE NO 8
 REPORT NO 968

FILE 8
 METHOD 8841

PKNO	TIME	AREA	NK	IDNO	CONC	NAME
1	1.333	2369	V		0.7281	
2	1.792	11689	V		3.5675	
3	2.028	11512	V		3.5378	
4	2.382	13823	V		4.2479	
5	2.758	9727	V		2.9892	
6	3.013	6888	V		1.8439	
7	3.227	12188	V		3.7454	
8	3.555	4123	V		1.267	
9	3.878	12135	V		3.7292	
10	4.195	10328	V		3.1715	
11	4.628	15686	V		4.8203	
12	4.865	5959	V		1.8313	
13	4.983	5534	V		1.7088	
14	5.173	2982	V		0.8918	
15	5.448	9833	V		3.8218	
16	5.828	6831	V		2.8991	
17	6.163	10845	V		3.3327	
18	6.715	10538	V		3.2385	
19	7.16	4152	V		1.276	
20	7.373	2918	V		0.8944	
21	8.84	3891	V		0.95	
22	8.3	1185	V		0.3395	
23	17.513	152213			46.7763	
TOTAL		325485			108	



Experience is the solution

314 North Pearl Street • Albany, New York 12207 • 800-848-4983 • (518) 434-4546 • Fax (518) 434-0891

LABORATORY REPORT

for

SUNY-NEW PALTZ
ENGINEERING DEPARTMENT

Attention: Paul Watson

Purchase Order #: 970815EA

Report date: 08/27/97
Number of samples analyzed: 22
AES Project ID: 970820EA
Invoice #: 179004

ELAP ID#: 10709

AIHA ID#: 7866
Page 1

Adirondack

Experience is the solution

314 North Pearl Street • Albany, New York 12207 • 800-848-4983 • (518) 434-4546 • Fax (518) 434-0891

CLIENT: SUNY-NEW PALTZ
CLIENT'S SAMPLE ID: A13
AES sample #: 970820EAO1

Date Sampled: 08/18/97
Date sample received: 08/20/97
Samples taken by: P. Watson
Location: SUNY New Paltz
MATRIX: Air composite

<u>PARAMETER PERFORMED</u>	<u>METHOD</u>	<u>RESULT</u>	<u>UNITS</u>	<u>NOTE/REF</u>	<u>TEST DATE</u>
Air Volume		252.4	liters	FIELD-PW	08/18/97
PCB-1016	DOH 311-1	<0.0002	mg/m3	GC-AIR-B40	08/20/97
PCB-1221	DOH 311-1	<0.0002	mg/m3	GC-AIR-B40	08/20/97
PCB-1232	DOH 311-1	<0.0002	mg/m3	GC-AIR-B40	08/20/97
PCB-1242	DOH 311-1	<0.0002	mg/m3	GC-AIR-B40	08/20/97
PCB-1248	DOH 311-1	<0.0002	mg/m3	GC-AIR-B40	08/20/97
PCB-1254	DOH 311-1	<0.0002	mg/m3	GC-AIR-B40	08/20/97
B-1260	DOH 311-1	<0.0002	mg/m3	GC-AIR-B40	08/20/97



Experience is the solution

314 North Pearl Street • Albany, New York 12207 • 800-848-4983 • (518) 434-4546 • Fax (518) 434-0891

CLIENT: SUNY-NEW PALTZ
CLIENT'S SAMPLE ID: A14
AES sample #: 970820EAO2

Date Sampled: 08/18/97
Date sample received: 08/20/97
Samples taken by: P. Watson Location: SUNY New Paltz
MATRIX: Air composite

<u>PARAMETER PERFORMED</u>	<u>METHOD</u>	<u>RESULT</u>	<u>UNITS</u>	<u>NOTE/REF</u>	<u>TEST DATE</u>
Air Volume		215.5	liters	FIELD-FW	08/18/97
PCB-1016	DOH 311-1	<0.0002	mg/m3	GC-AIR-B40	08/20/97
PCB-1221	DOH 311-1	<0.0002	mg/m3	GC-AIR-B40	08/20/97
PCB-1232	DOH 311-1	<0.0002	mg/m3	GC-AIR-B40	08/20/97
PCB-1242	DOH 311-1	<0.0002	mg/m3	GC-AIR-B40	08/20/97
PCB-1248	DOH 311-1	<0.0002	mg/m3	GC-AIR-B40	08/20/97
PCB-1254	DOH 311-1	<0.0002	mg/m3	GC-AIR-B40	08/20/97
B-1260	DOH 311-1	<0.0002	mg/m3	GC-AIR-B40	08/20/97



Experience is the solution

314 North Pearl Street • Albany, New York 12207 • 800-848-4983 • (518) 434-4546 • Fax (518) 434-0891

CLIENT: SUNY-NEW PALTZ
CLIENT'S SAMPLE ID: A15
AES sample #: 970820EAO3

Date Sampled: 08/18/97
Date sample received: 08/20/97
Location: SUNY New Paltz composite
Samples taken by: P. Watson
MATRIX: Air

<u>PARAMETER PERFORMED</u>	<u>METHOD</u>	<u>RESULT</u>	<u>UNITS</u>	<u>NOTE/CK REF</u>	<u>TEST DATE</u>
Air Volume		264.4	liters	FIELD-PW	08/18/97
PCB-1016	DOH 311-1	<0.0002	ng/m3	GC-AIR-B40	08/20/97
PCB-1221	DOH 311-1	<0.0002	ng/m3	GC-AIR-B40	08/20/97
PCB-1232	DOH 311-1	<0.0002	ng/m3	GC-AIR-B40	08/20/97
PCB-1242	DOH 311-1	<0.0002	ng/m3	GC-AIR-B40	08/20/97
PCB-1248	DOH 311-1	<0.0002	ng/m3	GC-AIR-B40	08/20/97
PCB-1254	DOH 311-1	<0.0002	ng/m3	GC-AIR-B40	08/20/97
9-1260	DOH 311-1	<0.0002	ng/m3	GC-AIR-B40	08/20/97



Experience is the solution

314 North Pearl Street • Albany, New York 12207 • 800-848-4983 • (518) 434-4546 • Fax (518) 434-0891

CLIENT: SUNY-NEW PALTZ
CLIENT'S SAMPLE ID: A16
AES sample #: 970820EAO4

Date Sampled: 08/18/97
Date sample received: 08/20/97
Location: SUNY New Paltz
composite

Samples taken by: P. Watson
MATRIX: Air

<u>PARAMETER PERFORMED</u>	<u>METHOD</u>	<u>RESULT</u>	<u>UNITS</u>	<u>NOTE/REF</u>	<u>TEST DATE</u>
Air Volume		234.7	liters	FIELD-PW	08/18/97
PCB-1016	DOH 311-1	<0.0002	ng/m3	GC-AIR-B40	08/20/97
PCB-1221	DOH 311-1	<0.0002	ng/m3	GC-AIR-B40	08/20/97
PCB-1232	DOH 311-1	<0.0002	ng/m3	GC-AIR-B40	08/20/97
PCB-1242	DOH 311-1	<0.0002	ng/m3	GC-AIR-B40	08/20/97
PCB-1248	DOH 311-1	<0.0002	ng/m3	GC-AIR-B40	08/20/97
PCB-1254	DOH 311-1	<0.0002	ng/m3	GC-AIR-B40	08/20/97
3-1260	DOH 311-1	<0.0002	ng/m3	GC-AIR-B40	08/20/97

Adirondack

Experience is the solution

314 North Pearl Street • Albany, New York 12207 • 800-848-4983 • (518) 434-4546 • Fax (518) 434-0891

CLIENT: SUNY-NEW PALTZ
CLIENT'S SAMPLE ID: A17
AES sample #: 970620EAO5

Date Sampled: 08/18/97
Date sample received: 08/20/97
Location: SUNY New Paltz
composite

Samples taken by: P. Watson
MATRIX: Air

<u>PARAMETER PERFORMED</u>	<u>METHOD</u>	<u>RESULT</u>	<u>UNITS</u>	<u>NOTE/REF</u>	<u>TEST DATE</u>
Air Volume		236.9	liters	FIELD-PW	08/18/97
PCB-1016	DOH 311-1	<0.0002	mg/m3	GC-AIR-B40	08/20/97
PCB-1221	DOH 311-1	<0.0002	mg/m3	GC-AIR-B40	08/20/97
PCB-1232	DOH 311-1	<0.0002	mg/m3	GC-AIR-B40	08/20/97
PCB-1242	DOH 311-1	<0.0002	mg/m3	GC-AIR-B40	08/20/97
PCB-1248	DOH 311-1	<0.0002	mg/m3	GC-AIR-B40	08/20/97
PCB-1254	DOH 311-1	<0.0002	mg/m3	GC-AIR-B40	08/20/97
B-1260	DOH 311-1	<0.0002	mg/m3	GC-AIR-B40	08/20/97

Adirondack

Experience is the solution

314 North Pearl Street • Albany, New York 12207 • 800-848-4983 • (518) 434-4546 • Fax (518) 434-0891

CLIENT: SUNY-NEW PALTZ
CLIENT'S SAMPLE ID: A18
AES sample #: 970820EAO6

Date Sampled: 08/18/97
Date sample received: 08/20/97
Location: SUNY New Paltz
composite

Samples taken by: P. Watson
MATRIX: Air

<u>PARAMETER PERFORMED</u>	<u>METHOD</u>	<u>RESULT</u>	<u>UNITS</u>	<u>NOTEBOOK REF</u>	<u>TEST DATE</u>
Air Volume		206.6	liters	FIELD-PW	08/18/97
PCB-1016	DOH 311-1	<0.0002	ng/m3	GC-AIR-B40	08/20/97
PCB-1221	DOH 311-1	<0.0002	ng/m3	GC-AIR-B40	08/20/97
PCB-1232	DOH 311-1	<0.0002	ng/m3	GC-AIR-B40	08/20/97
PCB-1242	DOH 311-1	<0.0002	ng/m3	GC-AIR-B40	08/20/97
PCB-1248	DOH 311-1	<0.0002	ng/m3	GC-AIR-B40	08/20/97
PCB-1254	DOH 311-1	<0.0002	ng/m3	GC-AIR-B40	08/20/97
7-1260	DOH 311-1	<0.0002	ng/m3	GC-AIR-B40	08/20/97

Adirondack

Experience is the solution

314 North Pearl Street • Albany, New York 12207 • 800-848-4983 • (518) 434-4546 • Fax (518) 434-0891

CLIENT: SUNY-NEW PALTZ
CLIENT'S SAMPLE ID: A19
AES sample #: 970820EAO7

Date Sampled: 08/18/97
Date sample received: 08/20/97
Location: SUNY New Paltz
composite

Samples taken by: P. Watson
MATRIX: Air

<u>PARAMETER PERFORMED</u>	<u>METHOD</u>	<u>RESULT</u>	<u>UNITS</u>	<u>NOTE/REF</u>	<u>TEST DATE</u>
Air Volume		228.0	liters	FIELD-PW	08/18/97
PCB-1016	DOH 311-1	<0.0002	ng/m3	GC-AIR-B40	08/20/97
PCB-1221	DOH 311-1	<0.0002	ng/m3	GC-AIR-B40	08/20/97
PCB-1232	DOH 311-1	<0.0002	ng/m3	GC-AIR-B40	08/20/97
PCB-1242	DOH 311-1	<0.0002	ng/m3	GC-AIR-B40	08/20/97
PCB-1248	DOH 311-1	<0.0002	ng/m3	GC-AIR-B40	08/20/97
PCB-1254	DOH 311-1	<0.0002	ng/m3	GC-AIR-B40	08/20/97
3-1260	DOH 311-1	<0.0002	ng/m3	GC-AIR-B40	08/20/97

Adirondack

Experience is the solution

314 North Pearl Street • Albany, New York 12207 • 800-848-4983 • (518) 434-4546 • Fax (518) 434-0891

CLIENT: SUNY-NEW PALTZ
CLIENT'S SAMPLE ID: A20
AES sample #: 970620EAO8

Date Sampled: 08/18/97
Date sample received: 08/20/97
Location: SUNY New Paltz
composite

Samples taken by: P. Watson
MATRIX: Air

<u>PARAMETER PERFORMED</u>	<u>METHOD</u>	<u>RESULT</u>	<u>UNITS</u>	<u>NOTE/REF</u>	<u>TEST DATE</u>
Air Volume		215.9	liters	FIELD-PW	08/18/97
PCB-1016	DOH 311-1	<0.0002	ng/m3	GC-AIR-B40	08/20/97
PCB-1221	DOH 311-1	<0.0002	ng/m3	GC-AIR-B40	08/20/97
PCB-1232	DOH 311-1	<0.0002	ng/m3	GC-AIR-B40	08/20/97
PCB-1242	DOH 311-1	<0.0002	ng/m3	GC-AIR-B40	08/20/97
PCB-1248	DOH 311-1	<0.0002	ng/m3	GC-AIR-B40	08/20/97
PCB-1254	DOH 311-1	<0.0002	ng/m3	GC-AIR-B40	08/20/97
1-1260	DOH 311-1	<0.0002	ng/m3	GC-AIR-B40	08/20/97

Adirondack

Experience is the solution

314 North Pearl Street • Albany, New York 12207 • 800-848-4983 • (518) 434-4546 • Fax (518) 434-0891

CLIENT: SUNY-NEW PALTZ
CLIENT'S SAMPLE ID: A21
AES sample #: 970820EAO9

Date Sampled: 08/18/97
Date sample received: 08/20/97
Samples taken by: P. Watson
Location: SUNY New Paltz
MATRIX: Air
composite

<u>PARAMETER PERFORMED</u>	<u>METHOD</u>	<u>RESULT</u>	<u>UNITS</u>	<u>NOTEBOOK REF</u>	<u>TEST DATE</u>
Air Volume		262.2	liters	FIELD-PW	08/18/97
PCB-1016	DOH 311-1	<0.0002	ng/m3	GC-AIR-B40	08/20/97
PCB-1221	DOH 311-1	<0.0002	ng/m3	GC-AIR-B40	08/20/97
PCB-1232	DOH 311-1	<0.0002	ng/m3	GC-AIR-B40	08/20/97
PCB-1242	DOH 311-1	<0.0002	ng/m3	GC-AIR-B40	08/20/97
PCB-1248	DOH 311-1	<0.0002	ng/m3	GC-AIR-B40	08/20/97
PCB-1254	DOH 311-1	<0.0002	ng/m3	GC-AIR-B40	08/20/97
-1260	DOH 311-1	<0.0002	ng/m3	GC-AIR-B40	08/20/97



Experience is the solution

314 North Pearl Street • Albany, New York 12207 • 800-848-4983 • (518) 434-4546 • Fax (518) 434-0891

CLIENT: SUNY-NEW PALTZ
CLIENT'S SAMPLE ID: A22
AES sample #: 970820EA10

Samples taken by: P. Watson
MATRIX: Air

Date Sampled: 08/18/97
Date sample received: 08/20/97
Location: SUNY New Paltz composite

<u>PARAMETER PERFORMED</u>	<u>METHOD</u>	<u>RESULT</u>	<u>UNITS</u>	<u>NOTE/REF</u>	<u>TEST DATE</u>
Air Volume		235.5	liters	FIELD-PW	08/18/97
PCB-1016	DOH 311-1	<0.0002	mg/m3	GC-AIR-B40	08/20/97
PCB-1221	DOH 311-1	<0.0002	mg/m3	GC-AIR-B40	08/20/97
PCB-1232	DOH 311-1	<0.0002	mg/m3	GC-AIR-B40	08/20/97
PCB-1242	DOH 311-1	<0.0002	mg/m3	GC-AIR-B40	08/20/97
PCB-1248	DOH 311-1	<0.0002	mg/m3	GC-AIR-B40	08/20/97
PCB-1254	DOH 311-1	<0.0002	mg/m3	GC-AIR-B40	08/20/97
7-1260	DOH 311-1	<0.0002	mg/m3	GC-AIR-B40	08/20/97

Adirondack

Experience is the solution

314 North Pearl Street • Albany, New York 12207 • 800-848-4983 • (518) 434-4546 • Fax (518) 434-0891

CLIENT: SUNY-NEW PALTZ
CLIENT'S SAMPLE ID: A23
AES sample #: 970820EA11

Date Sampled: 08/19/97
Date sample received: 08/20/97
Location: SUNY New Paltz
composite

Samples taken by: P. Watson
MATRIX: Air

<u>PARAMETER PERFORMED</u>	<u>METHOD</u>	<u>RESULT</u>	<u>UNITS</u>	<u>NOTEBOOK REF</u>	<u>TEST DATE</u>
PCB-1016	DOH 311-1	<0.05	ug	GC-AIR-B40	08/20/97
PCB-1221	DOH 311-1	<0.05	ug	GC-AIR-B40	08/20/97
PCB-1232	DOH 311-1	<0.05	ug	GC-AIR-B40	08/20/97
PCB-1242	DOH 311-1	<0.05	ug	GC-AIR-B40	08/20/97
PCB-1248	DOH 311-1	<0.05	ug	GC-AIR-B40	08/20/97
PCB-1254	DOH 311-1	<0.05	ug	GC-AIR-B40	08/20/97
PCB-1260	DOH 311-1	<0.05	ug	GC-AIR-B40	08/20/97

Adirondack

Experience is the solution

314 North Pearl Street • Albany, New York 12207 • 800-848-4983 • (518) 434-4546 • Fax (518) 434-0891

CLIENT: SUNY-NEW PALTZ
CLIENT'S SAMPLE ID: A24
AES sample #: 970820EA12

Date Sampled: 08/19/97
Date sample received: 08/20/97
Location: SUNY New Paltz
composite

Samples taken by: P. Watson
MATRIX: Air

<u>PARAMETER PERFORMED</u>	<u>METHOD</u>	<u>RESULT</u>	<u>UNITS</u>	<u>NOTEBK REF</u>	<u>TEST DATE</u>
Air Volume		216.4	liters	FIELD-PW	08/19/97
PCB-1016	DOH 311-1	<0.0002	ng/m3	GC-AIR-B40	08/20/97
PCB-1221	DOH 311-1	<0.0002	ng/m3	GC-AIR-B40	08/20/97
PCB-1232	DOH 311-1	<0.0002	ng/m3	GC-AIR-B40	08/20/97
PCB-1242	DOH 311-1	0.0003	ng/m3	GC-AIR-B40	08/20/97
PCB-1248	DOH 311-1	<0.0002	ng/m3	GC-AIR-B40	08/20/97
PCB-1254	DOH 311-1	0.0002	ng/m3	GC-AIR-B40	08/20/97
3-1260	DOH 311-1	<0.0002	ng/m3	GC-AIR-B40	08/20/97

Adirondack

Experience is the solution

314 North Pearl Street • Albany, New York 12207 • 800-848-4983 • (518) 434-4546 • Fax (518) 434-0891

CLIENT: SUNY-NEW PALTZ
CLIENT'S SAMPLE ID: A25
AES sample #: 970820EA13

Date Sampled: 08/19/97
Date sample received: 08/20/97
Location: SUNY New Paltz
composite

Samples taken by: P. Watson
MATRIX: Air

<u>PARAMETER PERFORMED</u>	<u>METHOD</u>	<u>RESULT</u>	<u>UNITS</u>	<u>NOTE/REF</u>	<u>TEST DATE</u>
Air Volume		223.7	liters	FIELD-PW	08/19/97
PCB-1016	DOH 311-1	<0.0002	mg/m3	GC-AIR-B40	08/20/97
PCB-1221	DOH 311-1	<0.0002	mg/m3	GC-AIR-B40	08/20/97
PCB-1232	DOH 311-1	<0.0002	mg/m3	GC-AIR-B40	08/20/97
PCB-1242	DOH 311-1	<0.0002	mg/m3	GC-AIR-B40	08/20/97
PCB-1248	DOH 311-1	<0.0002	mg/m3	GC-AIR-B40	08/20/97
PCB-1254	DOH 311-1	<0.0002	mg/m3	GC-AIR-B40	08/20/97
3-1260	DOH 311-1	<0.0002	mg/m3	GC-AIR-B40	08/20/97

Adirondack

Experience is the solution

314 North Pearl Street • Albany, New York 12207 • 800-848-4983 • (518) 434-4546 • Fax (518) 434-0891

CLIENT: SUNY-NEW PALTZ
CLIENT'S SAMPLE ID: A26
AES sample #: 970820EA14

Date Sampled: 08/19/97
Date sample received: 08/20/97
Samples taken by: P. Watson Location: SUNY New Paltz
MATRIX: Air composite

<u>PARAMETER PERFORMED</u>	<u>METHOD</u>	<u>RESULT</u>	<u>UNITS</u>	<u>NOTE/REF</u>	<u>TEST DATE</u>
Air Volume		187.0	liters	FIELD-PW	08/19/97
PCB-1016	DOH 311-1	<0.0002	mg/m3	GC-AIR-B40	08/20/97
PCB-1221	DOH 311-1	<0.0002	mg/m3	GC-AIR-B40	08/20/97
PCB-1232	DOH 311-1	<0.0002	mg/m3	GC-AIR-B40	08/20/97
PCB-1242	DOH 311-1	<0.0002	mg/m3	GC-AIR-B40	08/20/97
PCB-1248	DOH 311-1	<0.0002	mg/m3	GC-AIR-B40	08/20/97
PCB-1254	DOH 311-1	<0.0002	mg/m3	GC-AIR-B40	08/20/97
3-1260	DOH 311-1	<0.0002	mg/m3	GC-AIR-B40	08/20/97



Expertise is the solution

314 North Pearl Street • Albany, New York 12207 • 800-848-4983 • (518) 434-4546 • Fax (518) 434-0891

CLIENT: SUNY-NEW PALTZ
CLIENT'S SAMPLE ID: A27
AES sample #: 970820EA15

Date Sampled: 08/19/97
Date sample received: 08/20/97
Location: SUNY New Paltz
composite

Samples taken by: P. Watson
MATRIX: Air

<u>PARAMETER PERFORMED</u>	<u>METHOD</u>	<u>RESULT</u>	<u>UNITS</u>	<u>NOTE/REF</u>	<u>TEST DATE</u>
Air Volume		238.6	liters	FIELD-PW	08/19/97
PCB-1016	DOH 311-1	<0.0002	mg/m3	GC-AIR-B40	08/20/97
PCB-1221	DOH 311-1	<0.0002	mg/m3	GC-AIR-B40	08/20/97
PCB-1232	DOH 311-1	<0.0002	mg/m3	GC-AIR-B40	08/20/97
PCB-1242	DOH 311-1	<0.0002	mg/m3	GC-AIR-B40	08/20/97
PCB-1248	DOH 311-1	<0.0002	mg/m3	GC-AIR-B40	08/20/97
PCB-1254	DOH 311-1	<0.0002	mg/m3	GC-AIR-B40	08/20/97
1-1260	DOH 311-1	<0.0002	mg/m3	GC-AIR-B40	08/20/97



Experience is the solution

314 North Pearl Street • Albany, New York 12207 • 800-848-4983 • (518) 434-4546 • Fax (518) 434-0891

CLIENT: SUNY-NEW PALTZ
CLIENT'S SAMPLE ID: A28
AES sample #: 970820EA16

Date Sampled: 08/19/97
Date sample received: 08/20/97
Location: SUNY New Paltz
Samples taken by: P. Watson
MATRIX: Air composite

<u>PARAMETER PERFORMED</u>	<u>METHOD</u>	<u>RESULT</u>	<u>UNITS</u>	<u>NOTES/REF</u>	<u>TEST DATE</u>
Air Volume		232.7	liters	FIELD-PW	08/19/97
PCB-1016	DOH 311-1	<0.0002	mg/m3	GC-AIR-B40	08/20/97
PCB-1221	DOH 311-1	<0.0002	mg/m3	GC-AIR-B40	08/20/97
PCB-1232	DOH 311-1	<0.0002	mg/m3	GC-AIR-B40	08/20/97
PCB-1242	DOH 311-1	<0.0002	mg/m3	GC-AIR-B40	08/20/97
PCB-1248	DOH 311-1	<0.0002	mg/m3	GC-AIR-B40	08/20/97
PCB-1254	DOH 311-1	<0.0002	mg/m3	GC-AIR-B40	08/20/97
9-1260	DOH 311-1	<0.0002	mg/m3	GC-AIR-B40	08/20/97

Adirondack

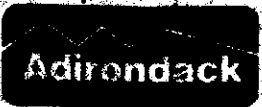
Experience is the solution

314 North Pearl Street • Albany, New York 12207 • 800-848-4983 • (518) 434-4546 • Fax (518) 434-0891

CLIENT: SUNY-NEW PALTZ
CLIENT'S SAMPLE ID: A29
AES sample #: 970820EA17

Date Sampled: 08/19/97
Date sample received: 08/20/97
Samples taken by: P. Watson
Location: SUNY New Paltz
MATRIX: Air composite

<u>PARAMETER PERFORMED</u>	<u>METHOD</u>	<u>RESULT</u>	<u>UNITS</u>	<u>NOTEBOOK REF</u>	<u>TEST DATE</u>
Air Volume		236.8	liters	FIELD-PW	08/19/97
PCB-1016	DOH 311-1	<0.0002	mg/m3	GC-AIR-B40	08/20/97
PCB-1221	DOH 311-1	<0.0002	mg/m3	GC-AIR-B40	08/20/97
PCB-1232	DOH 311-1	<0.0002	mg/m3	GC-AIR-B40	08/20/97
PCB-1242	DOH 311-1	<0.0002	mg/m3	GC-AIR-B40	08/20/97
PCB-1248	DOH 311-1	<0.0002	mg/m3	GC-AIR-B40	08/20/97
PCB-1254	DOH 311-1	<0.0002	mg/m3	GC-AIR-B40	08/20/97
B-1260	DOH 311-1	<0.0002	mg/m3	GC-AIR-B40	08/20/97



Experience is the solution

314 North Pearl Street • Albany, New York 12207 • 800-848-4983 • (518) 434-4546 • Fax (518) 434-0891

CLIENT: SUNY-NEW PALTZ
CLIENT'S SAMPLE ID: A30
AES sample #: 970820EA18

Date Sampled: 08/19/97
Date sample received: 08/20/97
Samples taken by: P. Watson
Location: SUNY New Paltz
MATRIX: Air composite

<u>PARAMETER PERFORMED</u>	<u>METHOD</u>	<u>RESULT</u>	<u>UNITS</u>	<u>NOTERK REF</u>	<u>TEST DATE</u>
Air Volume		207.1	liters	FIELD-PW	08/19/97
PCB-1016	DOH 311-1	<0.0002	ng/m3	GC-AIR-B40	08/20/97
PCB-1221	DOH 311-1	<0.0002	ng/m3	GC-AIR-B40	08/20/97
PCB-1232	DOH 311-1	<0.0002	ng/m3	GC-AIR-B40	08/20/97
PCB-1242	DOH 311-1	<0.0002	ng/m3	GC-AIR-B40	08/20/97
PCB-1248	DOH 311-1	<0.0002	ng/m3	GC-AIR-B40	08/20/97
PCB-1254	DOH 311-1	<0.0002	ng/m3	GC-AIR-B40	08/20/97
3-1260	DOH 311-1	<0.0002	ng/m3	GC-AIR-B40	08/20/97

Adirondack

Experience is the solution

314 North Pearl Street • Albany, New York 12207 • 800-848-4983 • (518) 434-4546 • Fax (518) 434-0891

CLIENT: SUNY-NEW PALTZ
CLIENT'S SAMPLE ID: A32
AES sample #: 970820EA19

Date Sampled: 08/19/97
Date sample received: 08/20/97
Samples taken by: P. Watson
Location: SUNY New Paltz
MATRIX: Air composite

<u>PARAMETER PERFORMED</u>	<u>METHOD</u>	<u>RESULT</u>	<u>UNITS</u>	<u>NOTE/REF</u>	<u>TEST DATE</u>
Air Volume		235.6	liters	FIELD-PW	08/19/97
PCB-1016	DOH 311-1	<0.0002	mg/m3	GC-AIR-B40	08/20/97
PCB-1221	DOH 311-1	<0.0002	mg/m3	GC-AIR-B40	08/20/97
PCB-1232	DOH 311-1	<0.0002	mg/m3	GC-AIR-B40	08/20/97
PCB-1242	DOH 311-1	<0.0002	mg/m3	GC-AIR-B40	08/20/97
PCB-1248	DOH 311-1	<0.0002	mg/m3	GC-AIR-B40	08/20/97
PCB-1254	DOH 311-1	<0.0002	mg/m3	GC-AIR-B40	08/20/97
PCB-1260	DOH 311-1	<0.0002	mg/m3	GC-AIR-B40	08/20/97



Experience is the solution

314 North Pearl Street • Albany, New York 12207 • 800-848-4983 • (518) 434-4546 • Fax (518) 434-0891

CLIENT: SUNY-NEW PALTZ
CLIENT'S SAMPLE ID: A33
AES sample #: 970820EA20

Samples taken by: P. Watson
MATRIX: Air

Date Sampled: 08/19/97
Date sample received: 08/20/97
Location: SUNY New Paltz composite

<u>PARAMETER PERFORMED</u>	<u>METHOD</u>	<u>RESULT</u>	<u>UNITS</u>	<u>NOTEBOOK REF</u>	<u>TEST DATE</u>
Air Volume		226.8	liters	FIELD-PW	08/19/97
PCB-1016	DOH 311-1	<0.0002	mg/m3	GC-AIR-B40	08/20/97
PCB-1221	DOH 311-1	<0.0002	mg/m3	GC-AIR-B40	08/20/97
PCB-1232	DOH 311-1	<0.0002	mg/m3	GC-AIR-B40	08/20/97
PCB-1242	DOH 311-1	<0.0002	mg/m3	GC-AIR-B40	08/20/97
PCB-1248	DOH 311-1	<0.0002	mg/m3	GC-AIR-B40	08/20/97
PCB-1254	DOH 311-1	<0.0002	mg/m3	GC-AIR-B40	08/20/97
PCB-1260	DOH 311-1	<0.0002	mg/m3	GC-AIR-B40	08/20/97



Experience is the solution

314 North Pearl Street • Albany, New York 12207 • 800-848-4983 • (518) 434-4546 • Fax (518) 434-0891

CLIENT: SUNY-NEW PALTZ
CLIENT'S SAMPLE ID: A31A
AES sample #: 970820EA21

Date Sampled: 08/19/97

Date sample received: 08/20/97

Samples taken by: P. Watson
MATRIX: Air

Location: SUNY New Paltz
composite

<u>PARAMETER PERFORMED</u>	<u>METHOD</u>	<u>RESULT</u>	<u>UNITS</u>	<u>NOTE/REF</u>	<u>TEST DATE</u>
Air Volume		219.2	liters	FIELD-PW	08/19/97
PCB-1016	DOH 311-1	<0.0002	mg/m3	GC-AIR-B40	08/20/97
PCB-1221	DOH 311-1	<0.0002	mg/m3	GC-AIR-B40	08/20/97
PCB-1232	DOH 311-1	<0.0002	mg/m3	GC-AIR-B40	08/20/97
PCB-1242	DOH 311-1	<0.0002	mg/m3	GC-AIR-B40	08/20/97
PCB-1248	DOH 311-1	<0.0002	mg/m3	GC-AIR-B40	08/20/97
PCB-1254	DOH 311-1	<0.0002	mg/m3	GC-AIR-B40	08/20/97
7-1260	DOH 311-1	<0.0002	mg/m3	GC-AIR-B40	08/20/97



Experience is the solution

314 North Pearl Street • Albany, New York 12207 • 800-848-4983 • (518) 434-4546 • Fax (518) 434-0891

CLIENT: SUNY-NEW PALTZ

Date Sampled: 08/19/97

CLIENT'S SAMPLE ID: Detection Limits

Date sample received: 08/20/97

AES sample #: 970820EA22


Samples taken by: P. Watson

Location: SUNY New Paltz

MATRIX: Air

composite

<u>PARAMETER PERFORMED</u>	<u>METHOD</u>	<u>RESULT</u>	<u>UNITS</u>	<u>NOTEBK REF</u>	<u>TEST DATE</u>
PCB-1016	DOH 311-1	0.05	ug	GC-AIR-B40	08/20/97
PCB-1221	DOH 311-1	0.05	ug	GC-AIR-B40	08/20/97
PCB-1232	DOH 311-1	0.05	ug	GC-AIR-B40	08/20/97
PCB-1242	DOH 311-1	0.05	ug	GC-AIR-B40	08/20/97
PCB-1248	DOH 311-1	0.05	ug	GC-AIR-B40	08/20/97
PCB-1254	DOH 311-1	0.05	ug	GC-AIR-B40	08/20/97
PCB-1260	DOH 311-1	0.05	ug	GC-AIR-B40	08/20/97

APPROVED BY: 
 Report date: 08/27/97

Adirondack

314 North Pearl Street
Albany, New York 12207
518-434-4546/434-0891 FAX

1072

REQUEST FOR ANALYSIS

CLIENT NAME <i>Sunny New Paltz</i>	PROJECT NAME (Location) <i>Sunny New Paltz</i>	SAMPLERS (Names) <i>Paul Winton</i>
ADDRESS <i>75 South Mainheim Blvd New Paltz 12561</i>	PO NUMBER <i>970815FA</i>	SAMPLERS (Signatures) <i>Paul Winton</i>

AES SAMPLE NUMBER	SAMPLE IDENTIFICATION	DATE SAMPLED	TIME		MEDIA TYPE/ MATRIX	NO. OF CONT'S	AIR SAMPLE VOLUME (LITERS)	TOTAL SAMPLING TIME (MIN.)	ANALYSIS REQUESTED
			A = A.M. P = P.M.						
770820 EA01	A15	8/18/97	1:30	A	Tr.s.1	1	252.4	240	D1311-1
EA02	A14		1:49	P		1	215.5	240	
EA03	A15		1:52	P		1	264.4	240	
EA04	A16		1:52	P		1	237.7	240	
EA05	A17		2:00	P		1	236.9	247	
EA06	A17		2:05	P		1	206.6	240	
EA07	A19		2:16	P		1	278.0	240	
EA08	A20		2:19	P		1	215.9	240	
EA09	A21		2:26	P		1	226.2	240	
EA10	A22		2:29	P		1	235.5	241	
				P					
				P					
				P					
				P					
				P					
				P					

SEND REPORT TO <i>Paul Winton</i>	SEND INVOICE TO <i>Paul Winton</i>	COMMENTS
--------------------------------------	---------------------------------------	----------

TURN-AROUND TIME — PLEASE CHECK ALL THAT APPLY

STANDARD SERVICE

RUSH SERVICE — Results requested by: *5 day*

FAX RESULTS TO: *12 Len Betty* FAX # *914 357-3388*

PHONE RESULTS TO: PH # ()

*Turn-around time varies by substance. For most substances, standard turn-around time is ten (10) working days. Please inquire for capacity of rush analysis.

LABORATORY APPROVAL	DATE	TIME	RECEIVED FOR LABORATORY BY <i>M. LP</i>	DATE <i>8/20/97</i>	TIME <i>9:00</i>
---------------------	------	------	--	------------------------	---------------------

CHAIN OF CUSTODY

RELINQUISHED BY (Signature) <i>Paul Winton</i>	RECEIVED BY (Signature)	DATE	TIME
RELINQUISHED BY (Signature)	RECEIVED BY (Signature)	DATE	TIME



314 North Pearl Street
Albany, New York 12207
518-434-4546/434-0891 FAX

2022

REQUEST FOR ANALYSIS

CLIENT NAME <i>Sunny New Pitz</i>	PROJECT NAME (Location) <i>Sunny New Pitz</i>	SAMPLERS (Names) <i>Paul Watson</i>
ADDRESS <i>75 South Alcega Blvd. New Pitz NY 12551</i>	PO NUMBER <i>970815EA</i>	SAMPLERS (Signatures) <i>Paul Watson</i>

AES SAMPLE NUMBER	SAMPLE IDENTIFICATION	DATE SAMPLED	TIME A = A.M. P = P.M.	MEDIA TYPE/ MATRIX	NO. OF CONT'S	AIR SAMPLE VOLUME (LITERS)	TOTAL SAMPLING TIME (MIN.)	ANALYSIS REQUESTED
70820 EA11	A23	8/19/97	8:30 A	Fl. s. 1	1	N/A	N/A	DJ/21-1
EA12	A24		8:38 A		1	216.4	240	
EA13	A25		8:40 A		1	223.7	240	
EA14	A26		8:48 P		1	187.0	236	
EA15	A27		8:51 A		1	238.6	240	
EA16	A28		8:57 P		1	232.7	240	
EA17	A29		9:05 P		1	236.8	240	
EA18	A30		9:12 P		1	207.1	240	
	A31		9:27 P		1			VOID
EA19	A32		9:31 P		1	235.6	244	
EA20	A33		9:36 P		1	276.8	243	
EA21	A31A		1:31 P		1	277.2	243	

SEND REPORT TO <i>Paul Watson</i>	SEND INVOICE TO <i>Paul Watson</i>	COMMENTS
--------------------------------------	---------------------------------------	----------

TURN-AROUND TIME — PLEASE CHECK ALL THAT APPLY

STANDARD SERVICE

RUSH SERVICE — Results requested by: *Srley Ltd*

FAX RESULTS TO: *Ken Seib* FAX # *(917) 257-3388*

PHONE RESULTS TO: PH # ()

*Turn-around time varies by substance. For most substances, standard turn-around time is ten (10) working days. Please inquire for capacity of rush analysis.

LABORATORY APPROVAL	DATE	TIME	RECEIVED FOR LABORATORY BY <i>M. LP</i>	DATE <i>8/20/97</i>	TIME <i>9:00</i>
---------------------	------	------	--	------------------------	---------------------

CHAIN OF CUSTODY

RELINQUISHED BY (Signature) <i>Paul Watson</i>	RECEIVED BY (Signature)	DATE	TIME
RELINQUISHED BY (Signature)	RECEIVED BY (Signature)	DATE	TIME

SAMPLE NUMBER

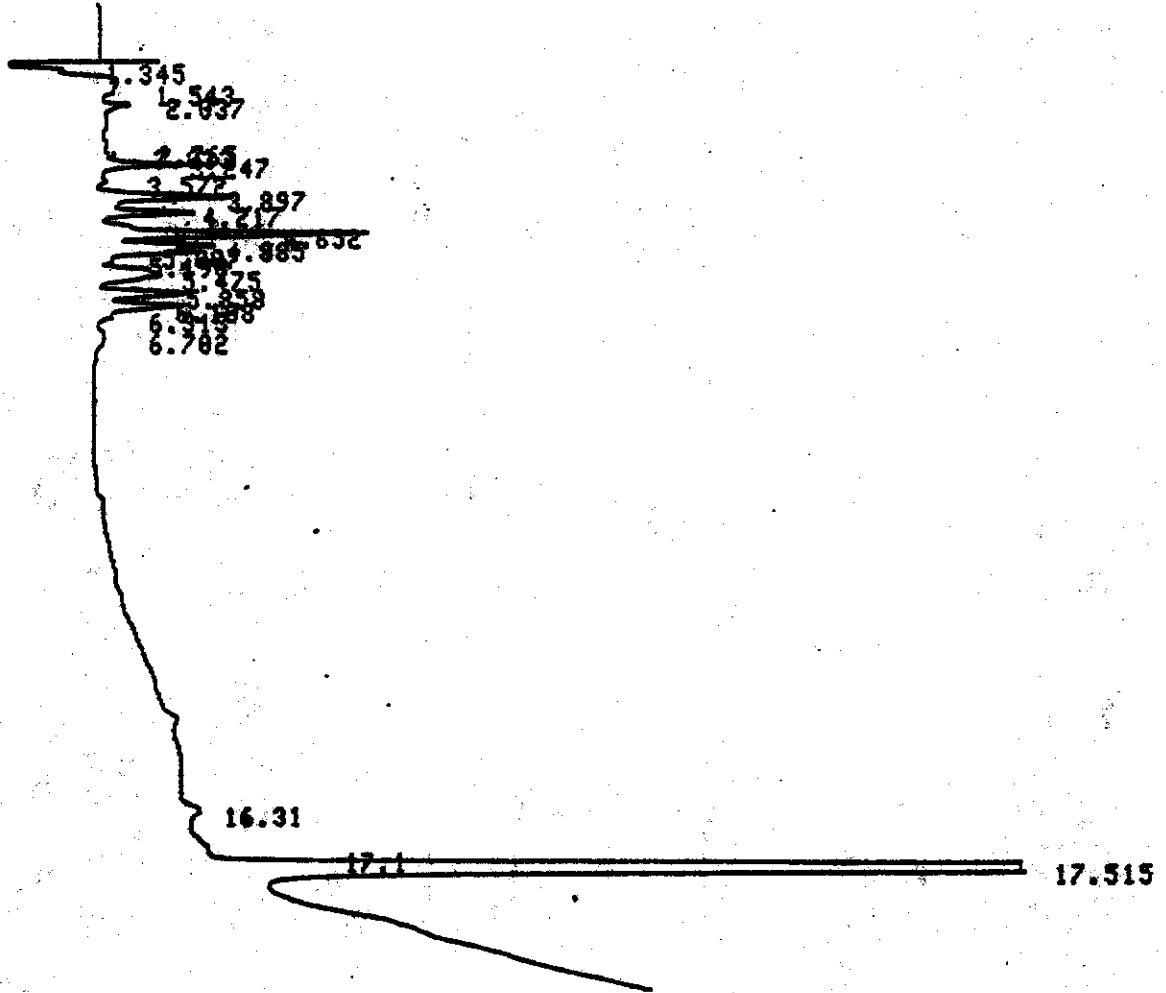
1 1016 0.1

DATE 97/08/20

TIME 14:51:12 ATTN 2

VAR-5

START



CHROMATOGRAM 1 MEMORIZED

CHROMATOPAC CR601
SAMPLE NO 0
REPORT NO 919

FILE 0
METHOD 0041

PKNO	TIME	AREA	NK	IDNO	CONC	NAME
1	1.345	1993			1.0395	
2	1.543	9968	V		5.1995	
3	2.037	2075	V		1.0025	
4	3.247	2621	V		1.367	
5	3.897	4716			2.4598	
6	4.217	3461	V		1.8054	
7	4.652	9877	V		5.1523	
8	4.885	3579	V		1.867	
9	5.007	2917	V		1.5217	
10	5.475	4355	V		2.2715	
11	5.858	3555	V		1.8545	
12	6.108	3325	V		1.7345	
13	6.702	1023	V		0.5364	
14	17.515	138236			72.1084	

38406

022

ADIRONACK ENVIRONMENTAL SERVICES

SAMPLE NUMBER

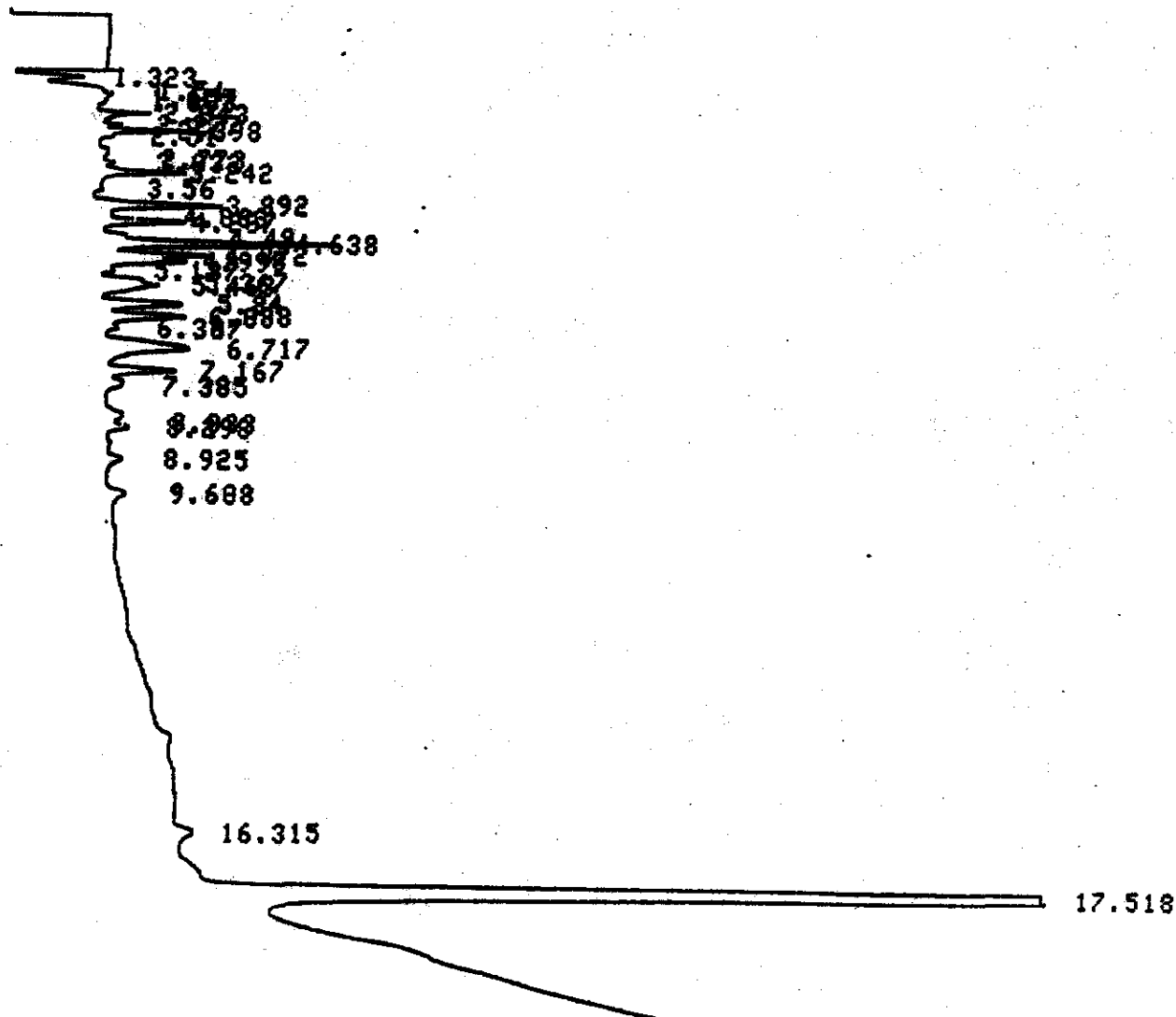
2 124201

DATE 97/08/20

TIME 15:13:55 ATTN 2

VAR-5

START



CHROMATOGRAM 1 MEMORIZED

CHROMATOPAC CR601
SAMPLE NO 0
REPORT NO 928

FILE 0
METHOD 0041

PKNO	TIME	AREA	NK	IDNO	CONC	NAME
1	1.323	6353			2.9148	
2	1.54	6077	V		2.7883	
3	1.657	5833	V		2.6761	
4	1.803	3337	V		1.531	
5	2.043	6918	V		3.1739	
6	2.277	1505	V		0.6985	
7	2.398	2582	V		1.1045	
8	3.242	2438	V		1.1186	
9	3.892	3714	V		1.7043	
10	4.207	2513	V		1.153	
11	4.638	7088	V		3.2519	
12	4.872	2951	V		1.3539	
13	4.998	2405	V		1.1033	
14	5.367	1156	V		0.5302	
15	5.463	2225	V		1.0211	
16	5.84	2994	V		1.3738	
17	6.088	2098	V		1.3259	
18	6.717	5525	V		2.5351	
19	7.167	2443	V		1.121	
20	17.518	147005			67.4491	
TOTAL		217950			100	

31342

ADIRONDACK ENVIRONMENTAL SERVICES

SAMPLE NUMBER

3 1254 0.1

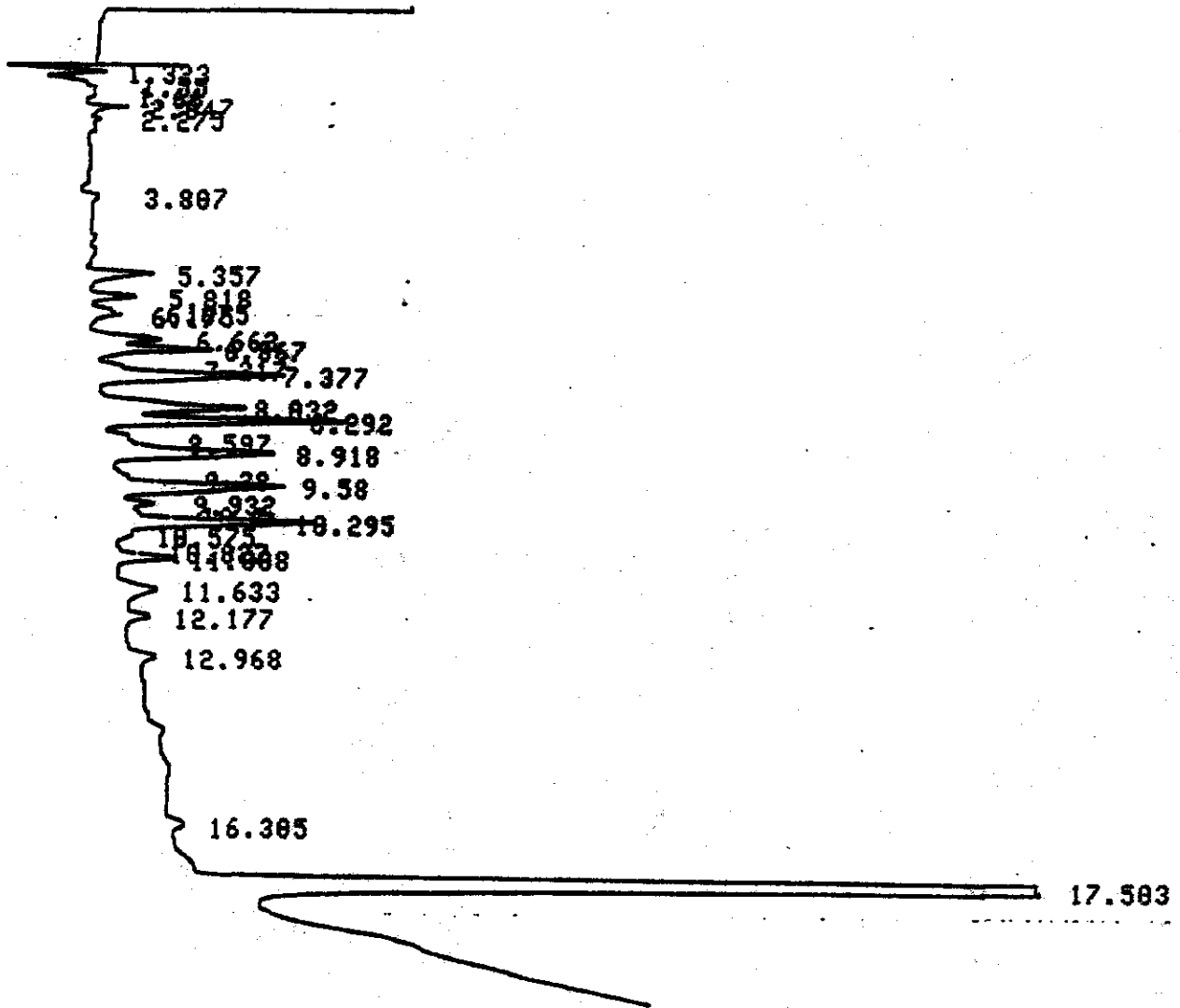
DATE 97/08/28

TIME 15:37:54

ATTN 2

VAR-5

START



024

CHROMATOGRAM 1 MEMORIZED

CHROMATOPAC CR681
SAMPLE NO 8
REPORT NO 921

FILE 8
METHOD 8841

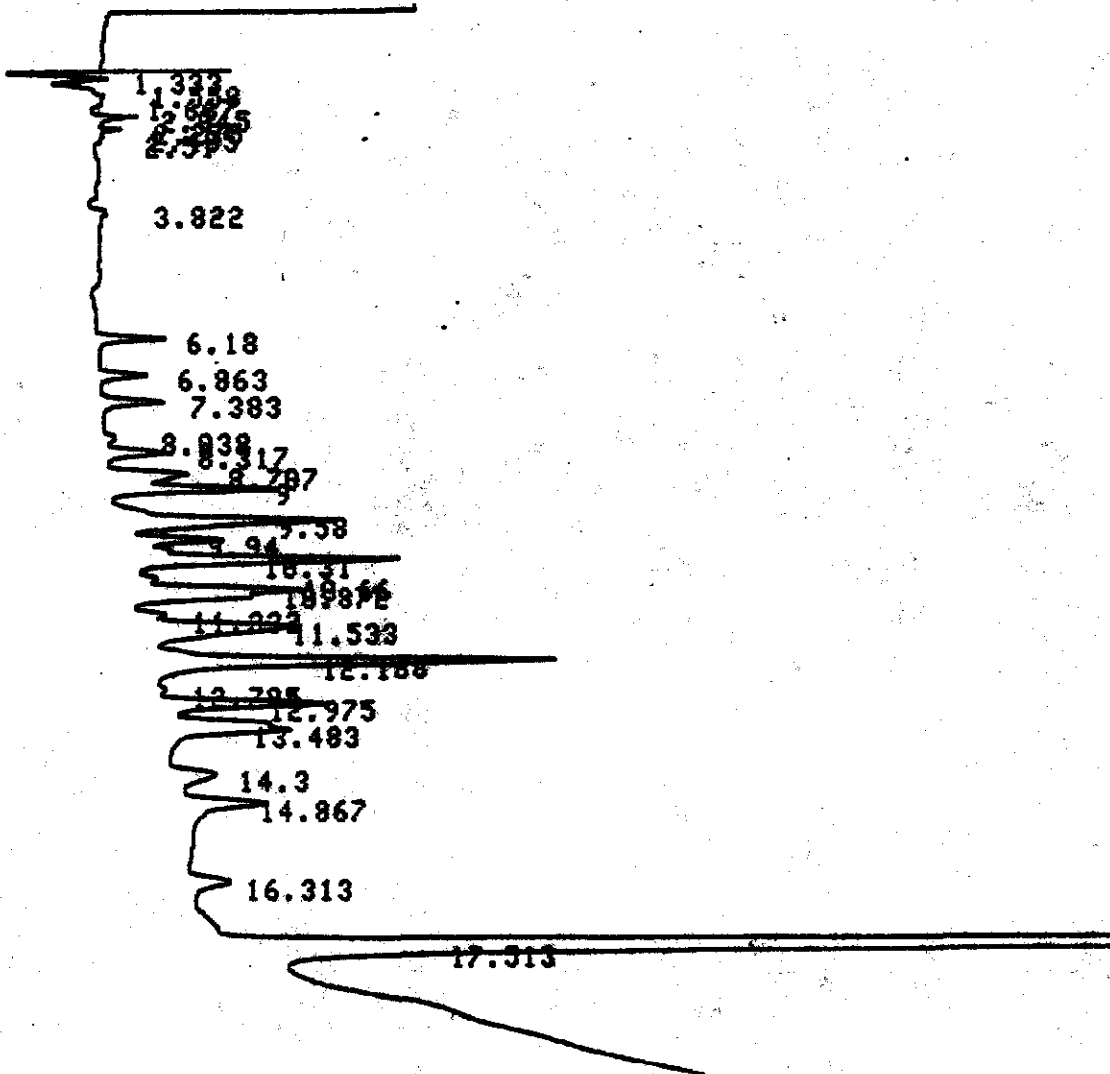
PKNO	TIME	AREA	MK	IDNO	CONC	NAME
1	1.323	7453			3.1617	
2	1.55	5884	V		2.1569	
3	1.66	7224	V		3.8647	
4	2.847	4396	V	14	1.8631	
5	5.357	2424			1.8283	
6	5.818	1526	V		8.6473	
7	6.663	2739			1.162	
8	6.867	4179	V		1.7728	
9	7.377	7657	V		3.2484	
10	8.832	6539			2.7741	
11	8.292	7838	V	62217	3.3251	
12	8.597	1158			8.4912	
13	8.918	8885	V		3.4298	
14	9.58	7244	V		3.873	
15	9.932	1897	V		8.4655	
16	10.295	7778	V		3.2964	
17	11.888	2184	V		8.8924	
18	11.633	1857			8.7877	
19	17.583	149351			63.3577	
TOTAL		235727			188	

ADIRONDACK ENVIRONMENTAL SERVICES

SAMPLE NUMBER 4 1260 0.1
DATE 97/08/28 TIME 16:01:36 ATTN 2

VAR-5

START



025

CHROMATOGRAM 1 MEMORIZED

CHROMATOPAC CR601
SAMPLE NO 0
REPORT NO 922

FILE 0
METHOD 0041

PKNO	TIME	AREA	NK	IDNO	CONC	NAME
1	1.558	1191			0.4755	
2	1.667	2588	V		1.0302	
3	2.045	2358	V		0.9419	
4	6.18	1741			0.6952	
5	6.863	1309			0.5226	
6	7.383	1728			0.6902	
7	8.317	1886	V		0.7531	
8	8.787	3676			1.4682	
9	9	5209	V		2.0801	
10	9.58	9998			3.9898	
11	9.94	3498	V		1.3937	
12	10.31	11148	V		4.4489	
13	10.66	1141	V		0.4557	
14	10.872	8787	V		3.509	
15	11.533	9049	V		3.6137	
16	12.188	16715	V		6.6752	
17	12.975	6567	V		2.6225	
18	13.483	8266	V		3.3009	
19	14.3	2093			0.8359	
20	14.867	4165	V		1.6633	
21	16.313	1919			0.7663	
22	17.513	145404			58.8681	
TOTAL		250402			100	

ADIRONDACK ENVIRONMENTAL SERVICES

SAMPLE NUMBER

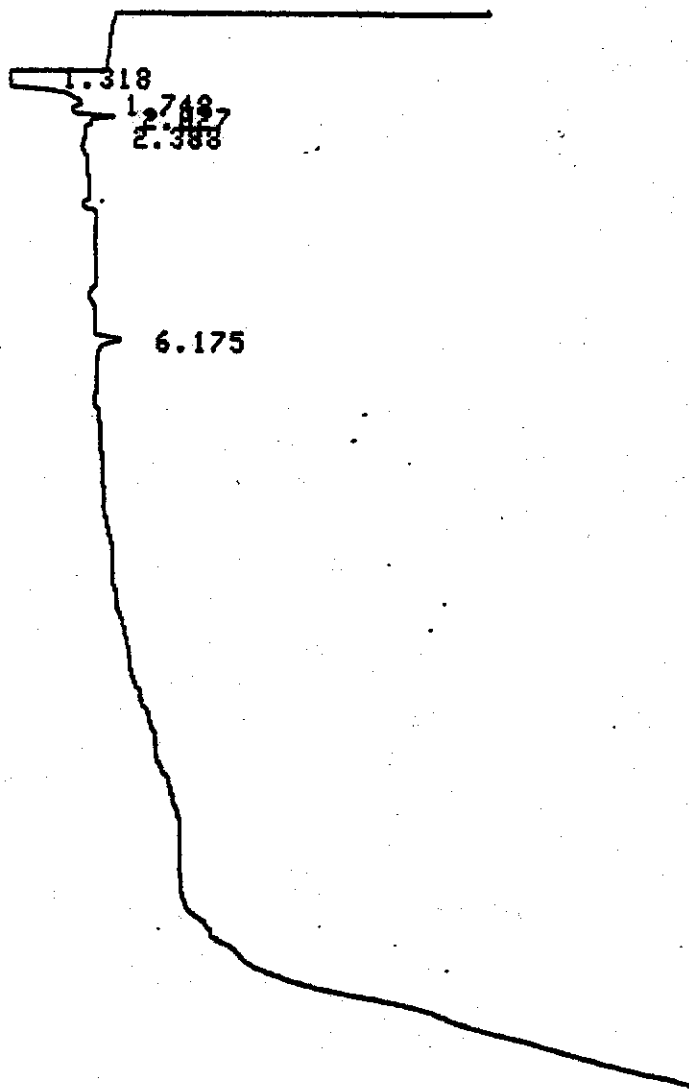
5 BIK

DATE 97/08/20

TIME 16:25:30 ATTN 2

VAR-5

START



CHROMATOGRAM 1 MEMORIZED

CHROMATOPAC CR601
 SAMPLE NO 0
 REPORT NO 923

FILE 0
 METHOD 0041

PKNO	TIME	AREA	NK	IDNO	CONC	NAME
1	1.318	4847			16.3455	
2	1.748	13100	V		52.9092	
3	2.027	6122	V		24.7203	
4	2.388	1490	V		6.017	
TOTAL		24759			100	

020

ADIRONDACK ENVIRONMENTAL SERVICES

SAMPLE NUMBER

9 9A Ec3

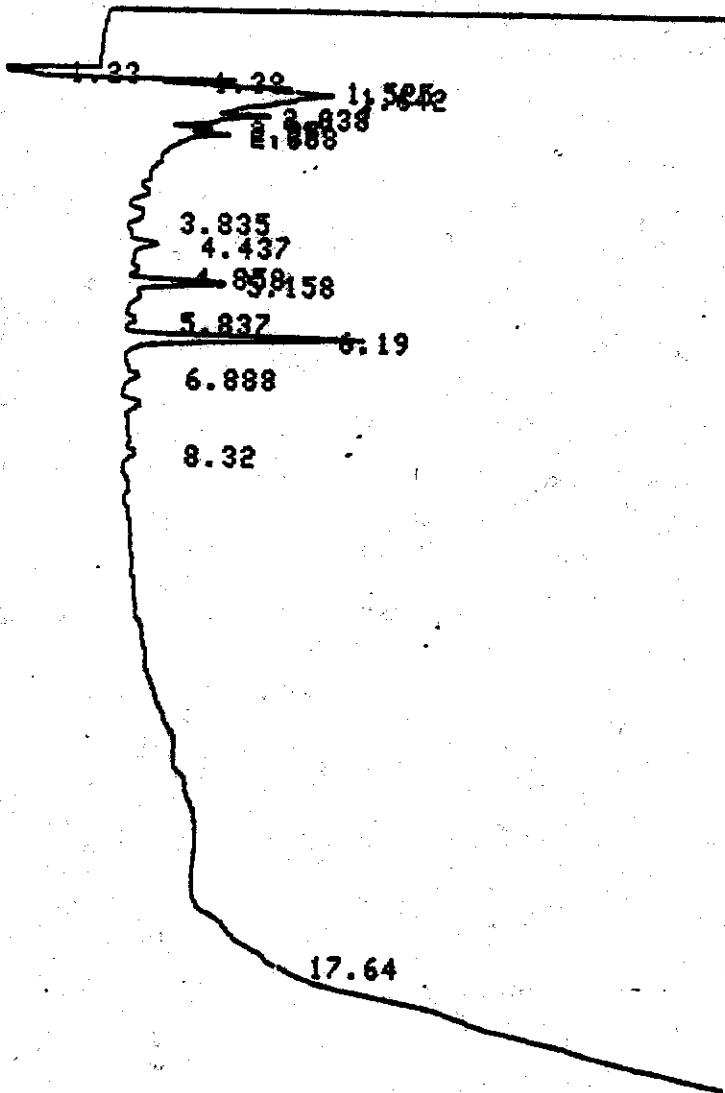
DATE 97/08/20

TIME 18:00:49

ATTN 2

VAR-5

START



CHROMATOGRAM 1 MEMORIZED

CHROMATOPAC CR601

SAMPLE NO 0

FILE METHOD

0 0041

REPORT NO 927

PKNO	TIME	AREA	MK	IDNO	CONC	NAME
1	1.23	1651			2.1777	
2	1.38	7489	V		9.8792	
3	1.525	8179	V		10.7898	
4	1.642	29536	V		38.9643	
5	2.038	10064	V		13.2765	
6	2.27	3299	V		4.3522	
7	2.388	5984	V		7.8938	
8	5.158	2611			3.4446	
9	6.19	6000				

031

ADIRONDACK ENVIRONMENTAL SERVICES

SAMPLE NUMBER

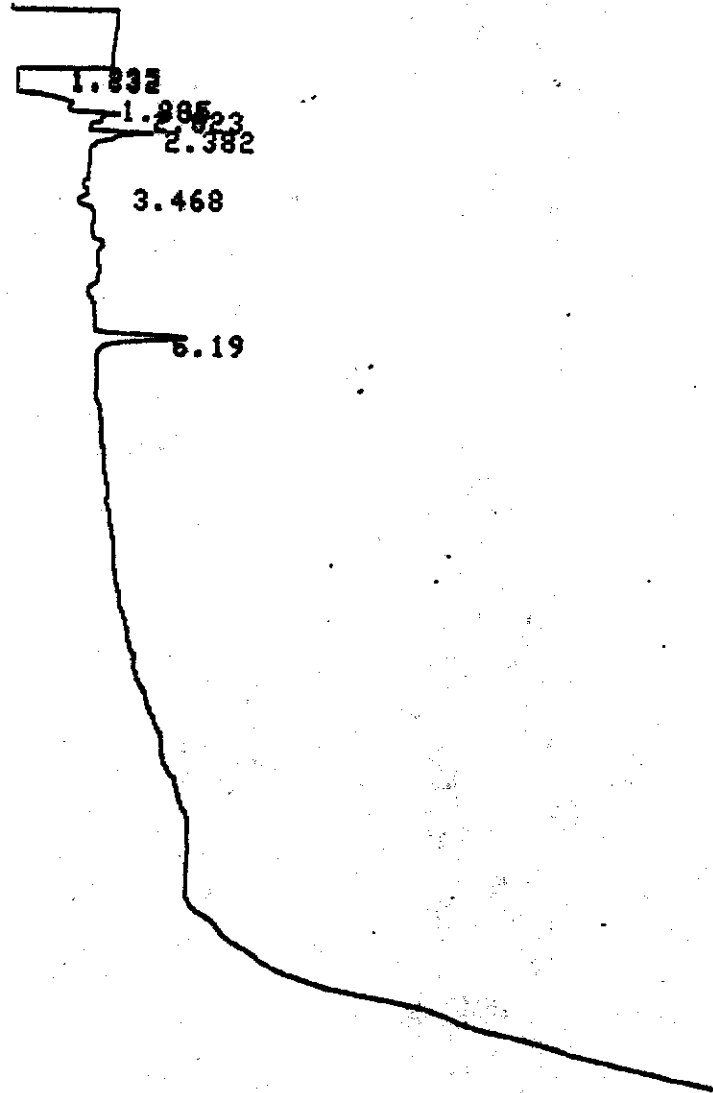
10 919 Ec4

DATE 97/08/20

TIME 18:23:41 ATTN 2

YAR-5

START



CHROMATOGRAM 1 MEMORIZED

CHROMATOPAC CR601

SAMPLE NO 0
REPORT NO 928

FILE 0
METHOD 0041

PKNO	TIME	AREA	NK	IDNO	CONC	NAME
1	1.235	1845			3.6552	
2	1.332	3833	V		13.4856	
3	1.805	8437	V		29.5042	
4	2.023	8796	V		38.7593	
5	2.382	3669	V		12.8381	
6	6.19	2815			9.8455	

ADIRONBACK ENVIRONMENTAL SERVICES

SAMPLE NUMBER

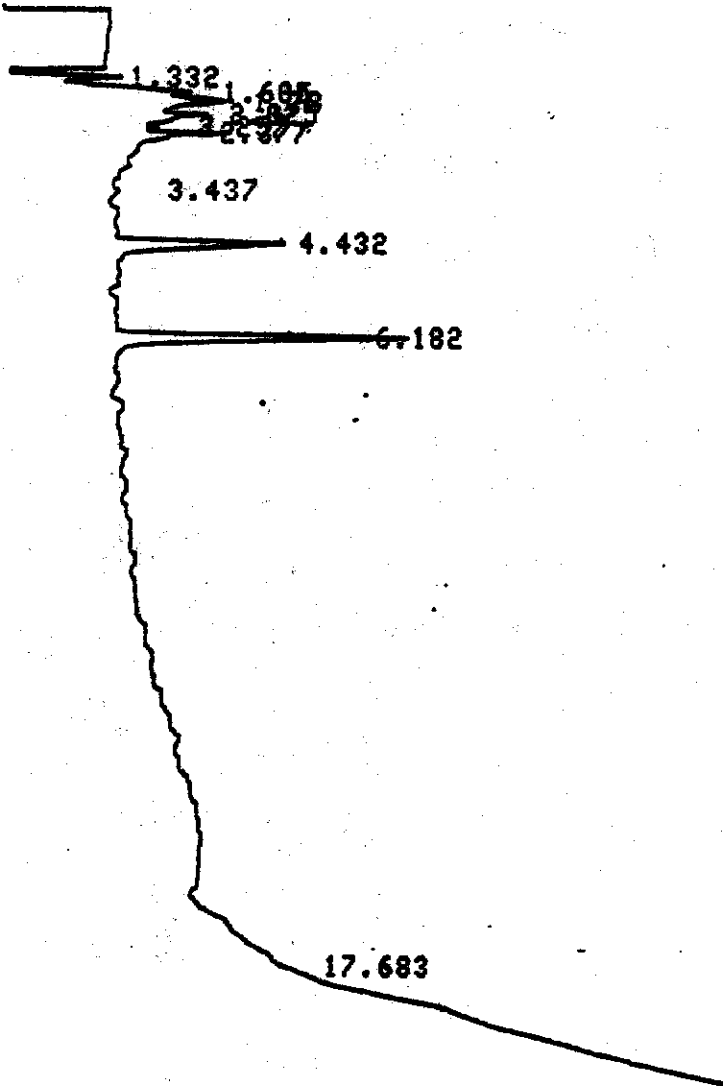
11 919 Ec5

DATE 97/08/20

TIME 18:47:22 ATTN 2

VAR-5

START



CHROMATOGRAM 1 MEMORIZED

CHROMATOPAC CR601

SAMPLE NO 0

REPORT NO 929

FILE METHOD

0 0041

PKNO	TIME	AREA	NK	IDNO	CONC	NAME
1	1.332	9292			14.0455	
2	1.685	12178	V		18.3961	
3	1.78	16045	V		24.2541	
4	2.025	8208	V		12.4071	
5	2.257	2216	V		3.35	
6	2.377	4117	V		6.223	
7	4.432	5418			8.1902	
0	6.100	0000			0.0000	

ADIRONDACK ENVIRONMENTAL SERVICES

SAMPLE NUMBER

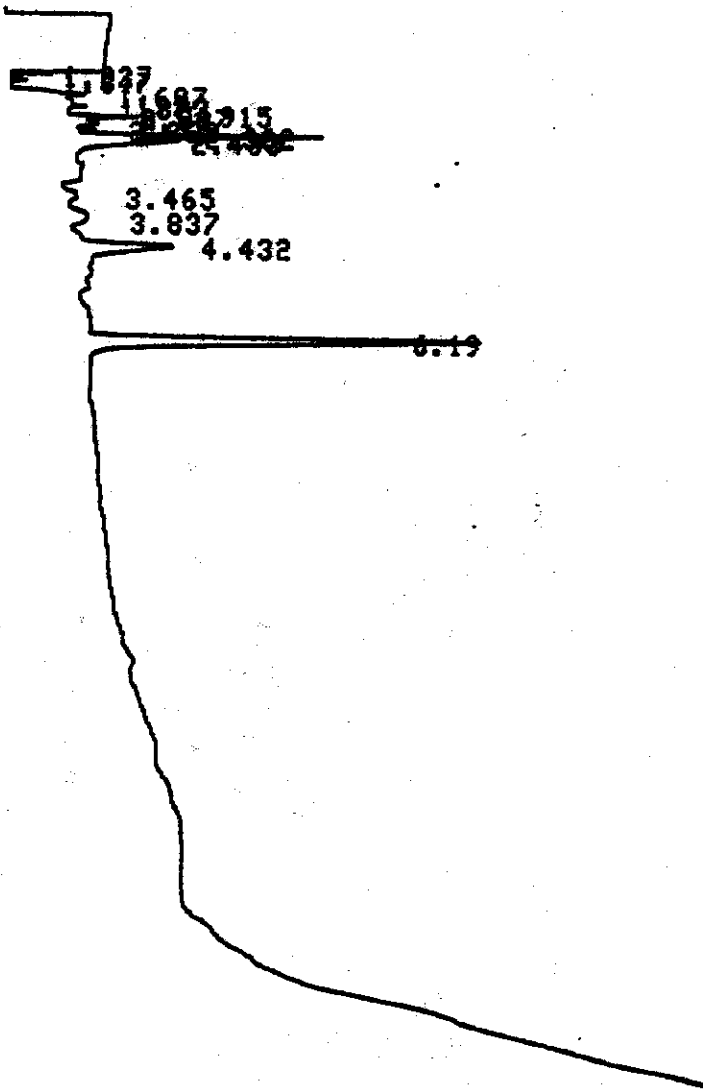
12 919 ECG

DATE 97/08/20

TIME 19:11:10 ATTN 2

VAR-5

START



CHROMATOPAC CR601
SAMPLE NO 0
REPORT NO 938

FILE 0
METHOD 0041

PKNO	TIME	AREA	NK	IDNO	CONC	NAME
1	1.237	1555			2.8189	
2	1.347	4289	V		7.6082	
3	1.687	7444	V		13.4562	
4	1.7	3829	V		6.9224	
5	1.823	3229	V		5.8376	
6	1.915	2336	V		4.2228	
7	2.027	3448	V		6.233	
8	2.13	2933	V		5.3825	
9	2.262	1587	V		2.8694	
10	2.382	4949	V		8.9465	
11	2.483	3549	V		6.4152	
12	3.837	1247	V		2.2547	
13	4.432	2924			5.2859	
14	6.19	12879			21.8347	
TOTAL		55319			100	

ADIRONACK ENVIRONMENTAL SERVICES

SAMPLE NUMBER

13

918 ECT

DATE 97/08/20

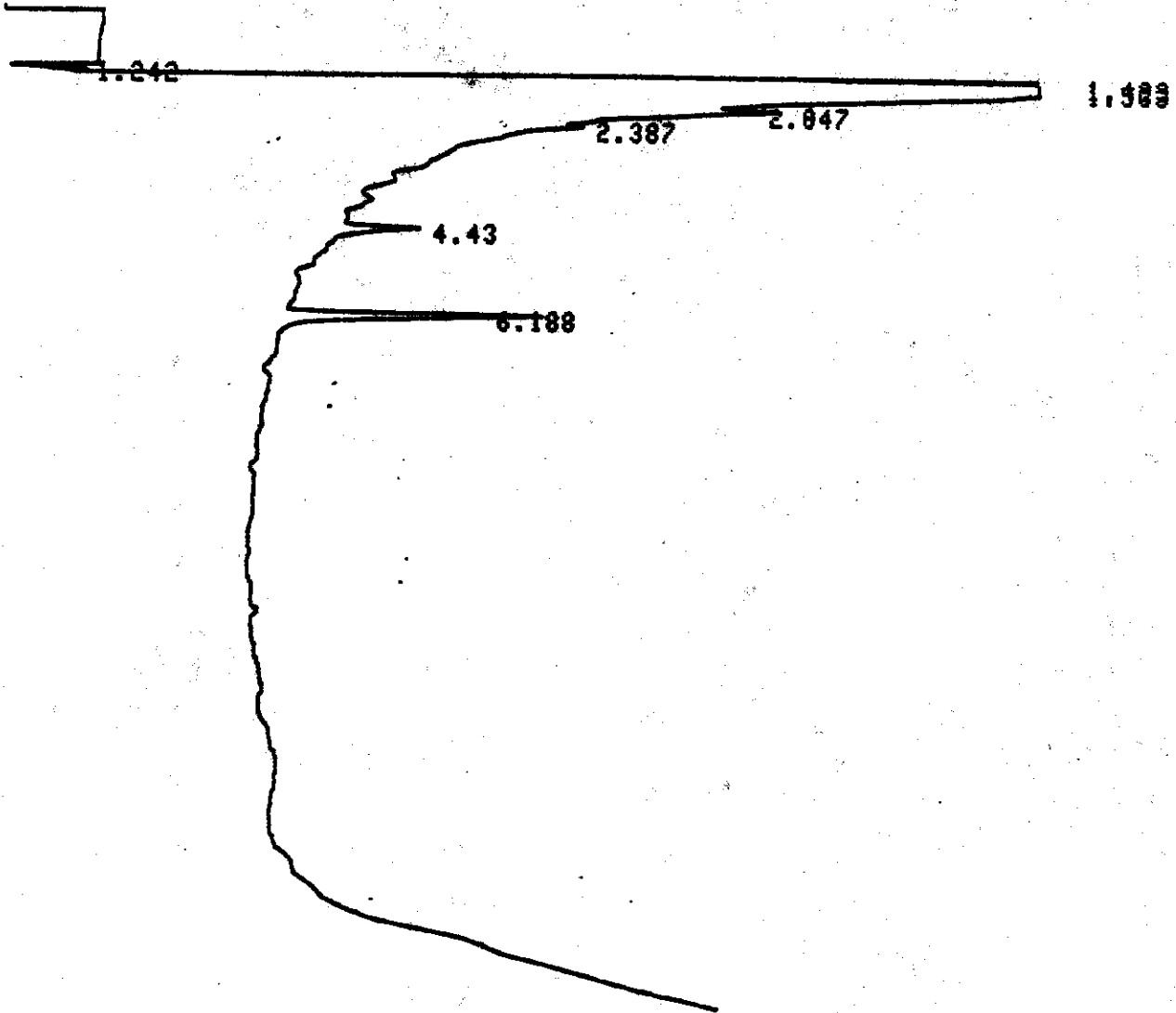
TIME 19:35:07

ATTN

2

VAR-5

START



CHROMATOGRAM 1 MEMORIZED

CHROMATOPAC CR601

SAMPLE NO 8

REPORT NO 931

FILE METHOD

0

0041

PKNO	TIME	AREA	MK	IDNO	CONC	NAME
1	1.242	1548			0.5322	
2	1.423	58715	V		20.1881	
3	1.533	120172	V		41.3191	
4	2.047	51342	V		17.653	
5	2.387	48521	V		16.6831	
6	4.43	2478			0.8519	
7	6.188	8864			2.7726	

ADIRONDACK ENVIRONMENTAL SERVICES

SAMPLE NUMBER

14 919 E18

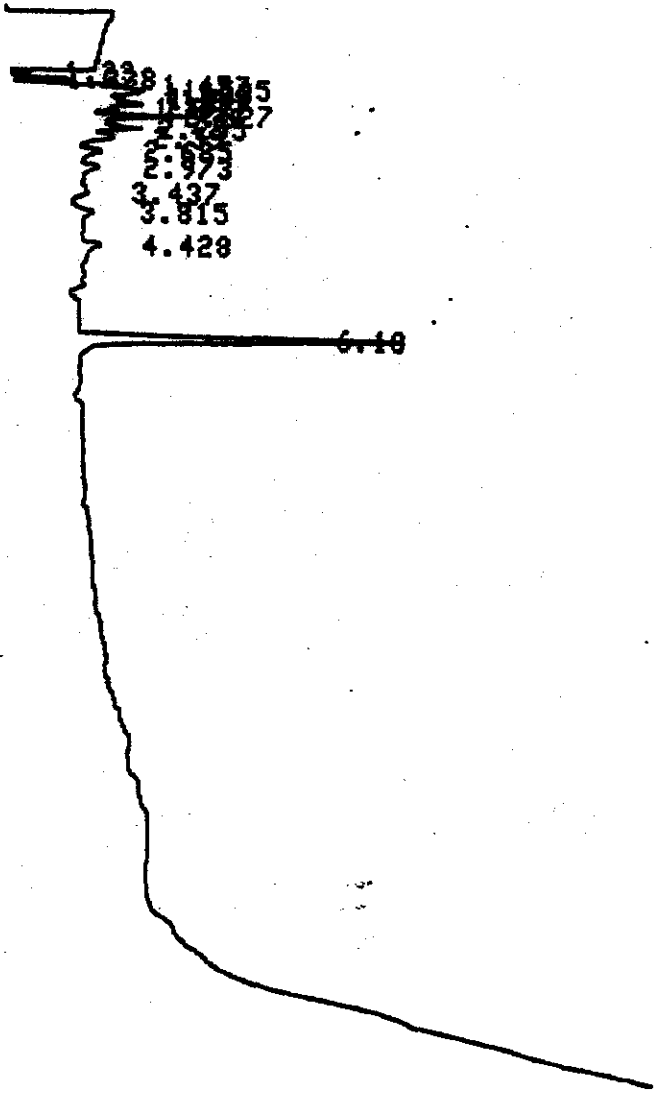
DATE 97/08/20

TIME 19:58:38

ATTN 2

VAR-5

START



CHROMATOGRAM 1 MEMORIZED

CHROMATOPAC CR601
SAMPLE NO 0
REPORT NO 932

FILE 0
METHOD 8041

PKNO	TIME	AREA	NK	IDNO	CONC	NAME
1	1.23	1958			2.0712	
2	1.338	6509	V		7.9137	
3	1.457	6471	V		7.8668	
4	1.535	6379	V		7.7561	
5	1.608	4865	V		5.915	
6	1.7	5538	V		6.7236	
7	1.817	6895	V		8.3825	
8	1.893	5088	V		6.0886	
9	2.027	9536	V		11.5936	
10	2.255	7293	V		8.0665	
11	2.39	6445	V		7.8357	
12	2.685	4850	V		5.8967	
13	2.973	1728	V		2.1011	
14	6.18	8792			10.6888	
TOTAL		82252			100	

ADIRONBACK ENVIRONMENTAL SERVICES

SAMPLE NUMBER

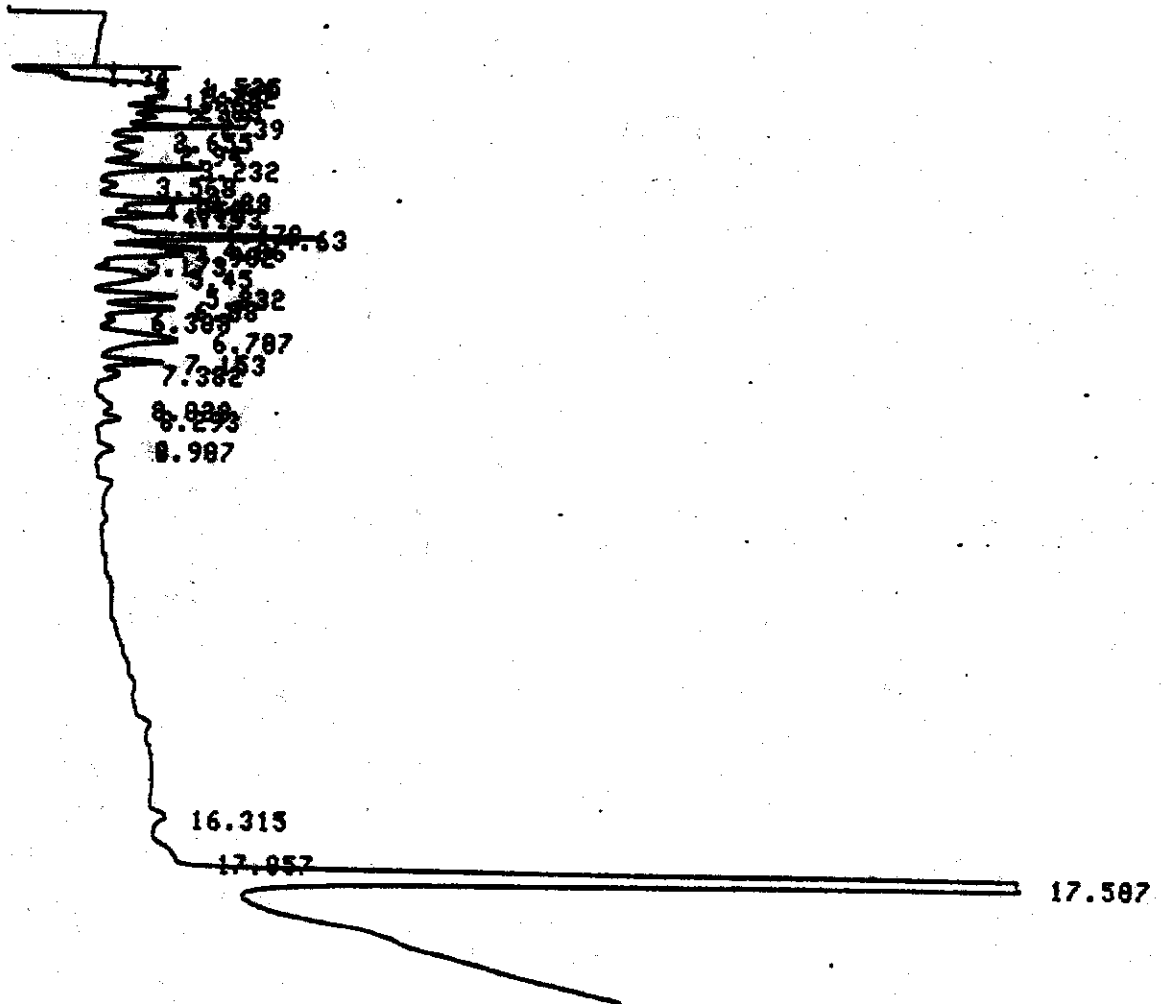
15 12420.1

DATE 97/08/20

TIME 20:22:36 ATTN 2

VAR-5

START



CHROMATOPAC CR601
SAMPLE NO 8
REPORT NO 933

FILE 8
METHOD 8841

PKNO	TIME	AREA	MK	IDNO	CONC	NAME
1	1.34	4583			1.2986	
2	1.535	10591	V		3.001	
3	1.65	5261	V		1.4906	
4	1.732	6934	V		1.9647	
5	1.863	6382	V		1.8084	
6	2.03	9259	V		2.6235	
7	2.19	10085	V		2.8573	
8	2.39	10806	V		3.0619	
9	2.655	10531	V		2.9839	
10	2.94	11688	V		3.3116	
11	3.232	13658	V		3.8699	
12	3.568	8792	V		2.4912	
13	3.88	10552	V		2.9897	
14	4.052	3353	V		0.9582	
15	4.193	7237	V		2.0505	
16	4.473	5571	V		1.5785	
17	4.63	11750	V		3.3292	
18	4.86	6218	V		1.7618	
19	4.982	5639	V		1.5976	
20	5.173	2597	V		0.7359	
21	5.45	9395	V		2.6619	
22	5.832	6555	V		1.8574	
23	6.08	5243	V		1.4857	
24	6.308	2559	V		0.7249	
25	6.707	9080	V		2.5727	
26	7.153	3018	V		0.8552	
27	7.382	1466	V		0.4154	
28	17.507	154128			43.6708	
TOTAL		352933			180	

ADIRONDACK ENVIRONMENTAL SERVICES

SAMPLE NUMBER

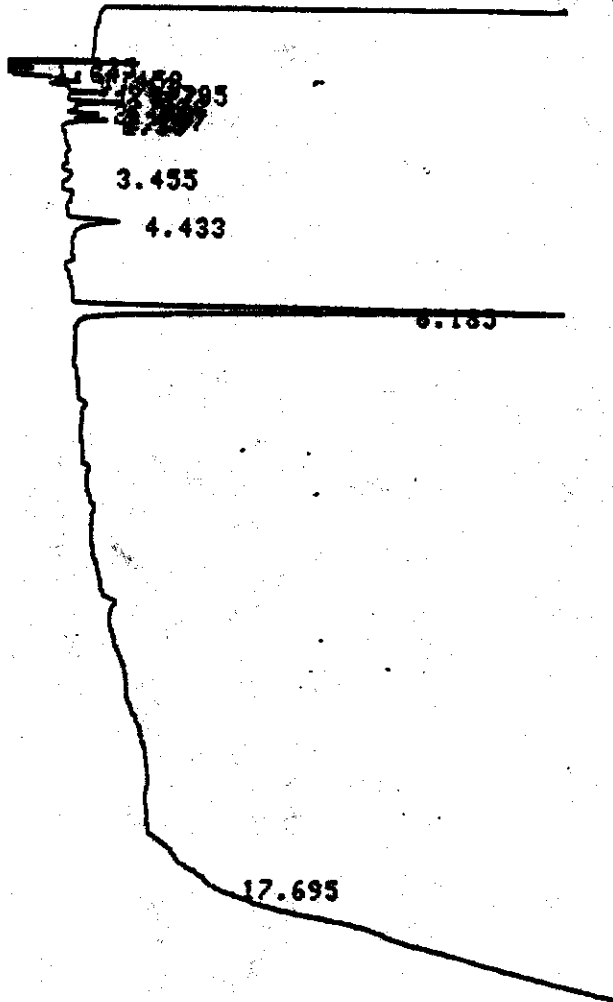
16 918 EG 9

DATE 97/08/20

TIME 20:46:45 ATTN 2

VAR-5

START



CHROMATOGRAM 1 MEMORIZED

CHROMATOPAC CR681
 SAMPLE NO 8
 REPORT NO 934

FILE 8
 METHOD 0041

PKNO	TIME	AREA	NK	IDNO	CONC	NAME
1	1.235	2785			5.3433	
2	1.347	4743	V		9.3684	
3	1.458	2183	V		4.1539	
4	1.613	6293	V		12.4296	
5	1.785	3960	V		7.8223	
6	1.827	3658	V		7.2248	
7	2.028	5749	V		11.3546	
8	2.148	2855	V		4.8581	
9	2.267	1879	V		3.7188	
10	2.38	1283	V		2.5332	
11	4.433	1426			2.817	
12	6.185	14776			29.1841	

033

SAMPLE NUMBER

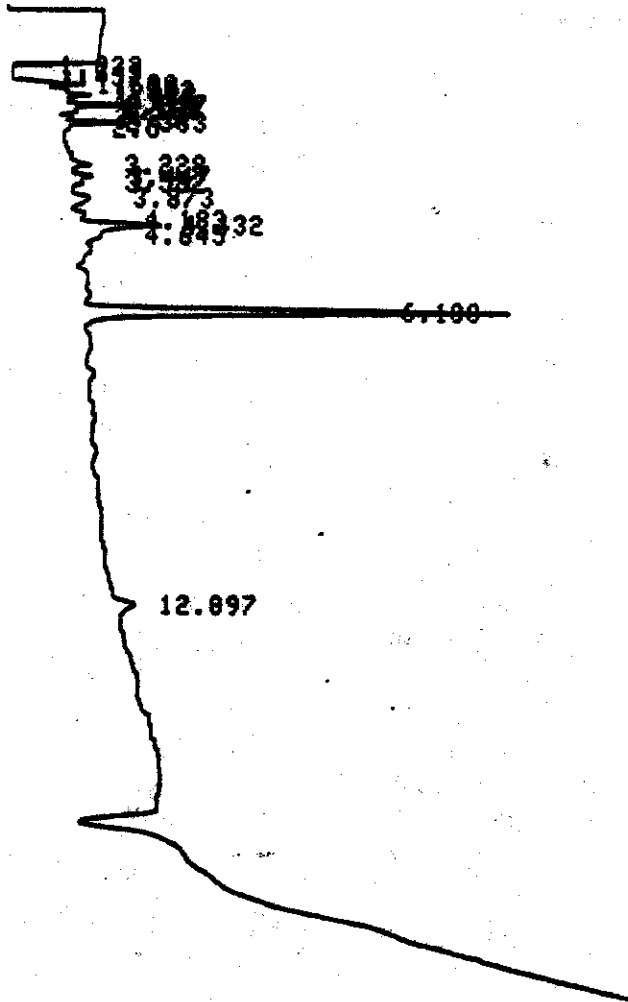
17 919 EC10

DATE 97/08/20

TIME 21:10:04 ATTN 2

VAR-5

START



CHROMATOGRAM 1 MEMORIZED

CHROMATOPAC CR601
SAMPLE NO 8
REPORT NO 935

FILE 8
METHOD 0041

PKNO	TIME	AREA	NK	IDNO	CONC	NAME
1	1.233	1796			3.7601	
2	1.343	4218	V		8.8382	
3	1.457	1728	V		3.6181	
4	1.608	5962	V		12.4827	
5	1.722	3518	V		7.366	
6	1.822	3149	V		6.5933	
7	1.915	2618	V		5.4801	
8	2.027	3386	V		7.0887	
9	2.123	2326	V		4.8784	
10	2.267	1211	V		2.535	
11	2.383	1696	V		3.5514	
12	4.432	2754	V		5.7669	
13	6.100	13481			28.8572	
TOTAL		47764			100	

039

SAMPLE NUMBER

18 919 C11

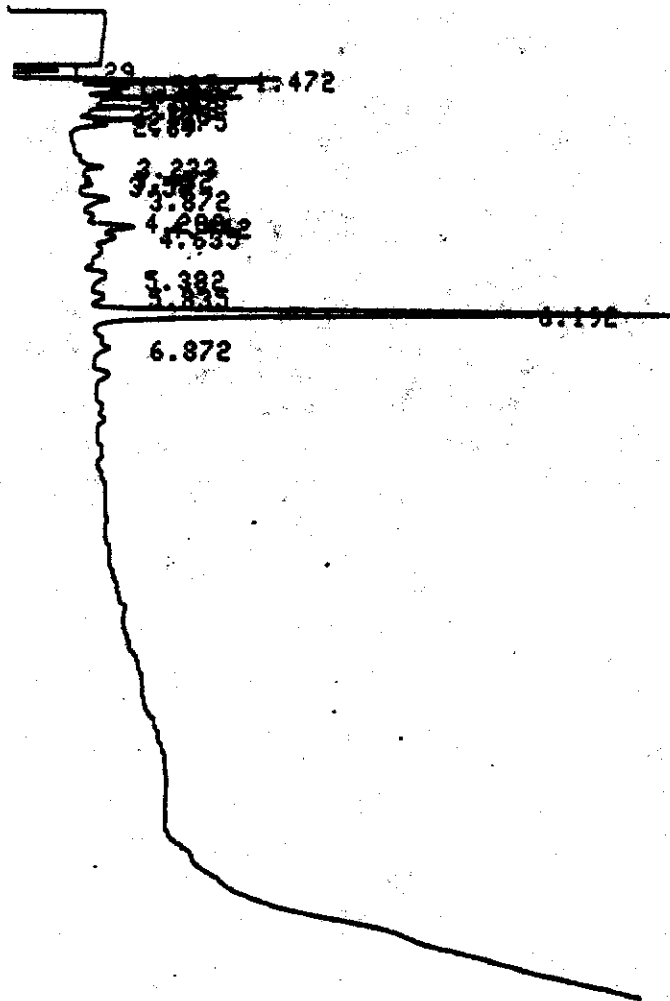
DATE 97/08/20

TIME 21:33:52

ATTN 2

VAR-5

START



CHROMATOGRAM 1 MEMORIZED

CHROMATOPAC CR601
SAMPLE NO 8
REPORT NO 936

FILE 8
METHOD 0041

PKNO	TIME	AREA	HK	IDNO	CONC	NAME
1	1.29	7867			10.6156	
2	1.472	4533	V		6.8092	
3	1.527	4378	V		6.5767	
4	1.622	5770	V		8.6673	
5	1.72	3971	V		5.9646	
6	1.838	5736	V		8.6163	
7	2.042	7055	V		10.5983	
8	2.158	1729	V		2.598	
9	2.275	2563	V		3.8587	
10	2.39	1315	V		1.9756	
11	3.872	1051			1.5788	
12	4.442	1480	V		2.2229	
13	5.382	1248			1.8744	
14	6.192	18674	V		28.0516	

TOTAL

040

SAMPLE NUMBER

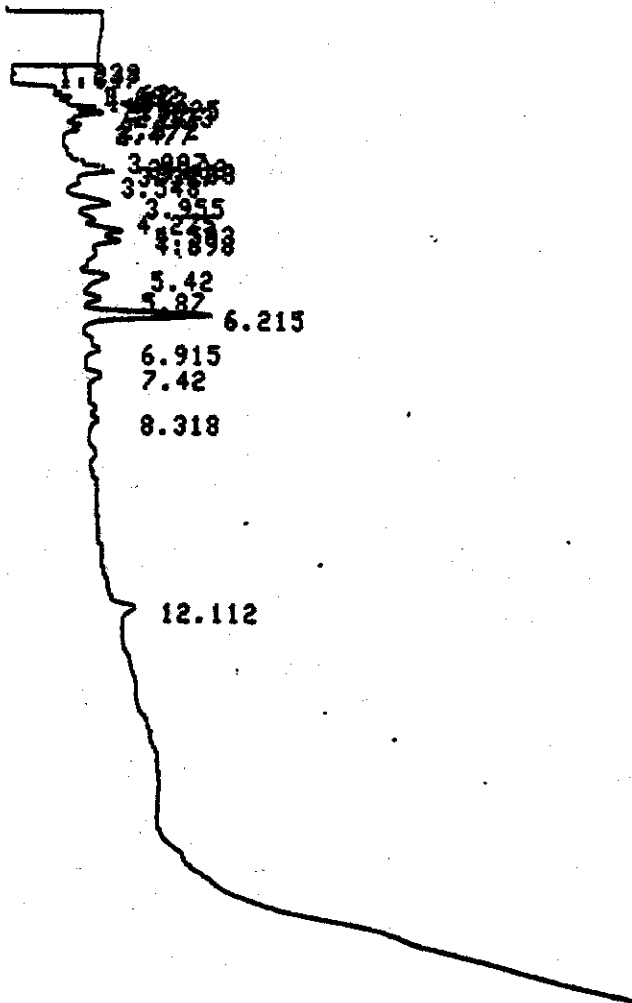
19 9/9 EC 12

DATE 97/08/28

TIME 21:57:40 ATTN 2

VAR-5

START



CHROMATOGRAM 1 MEMORIZED

CHROMATOPAC CR601
SAMPLE NO 8
REPORT NO 937

FILE 8
METHOD 0041

PKNO	TIME	AREA	MK	IDNO	CONC	NAME
1	1.238	1162			3.852	
2	1.347	4887	V		10.7386	
3	1.62	4422	V		11.6186	
4	1.692	2662	V		6.9947	
5	1.917	3111	V		8.1723	
6	1.925	2393	V		6.2861	
7	2.02	2393	V		6.2869	
8	2.133	3355	V		8.8135	
9	2.372	2282	V		5.9949	
10	3.317	1084	V		2.8483	
11	3.955	1828			4.8015	
12	4.503	1433	V		3.765	
13	4.698	1137	V		2.9882	
14	5.42	1480			3.8887	
15	6.215	5234	V		13.7507	

041

ADIRONDACK ENVIRONMENTAL SERVICES

SAMPLE NUMBER

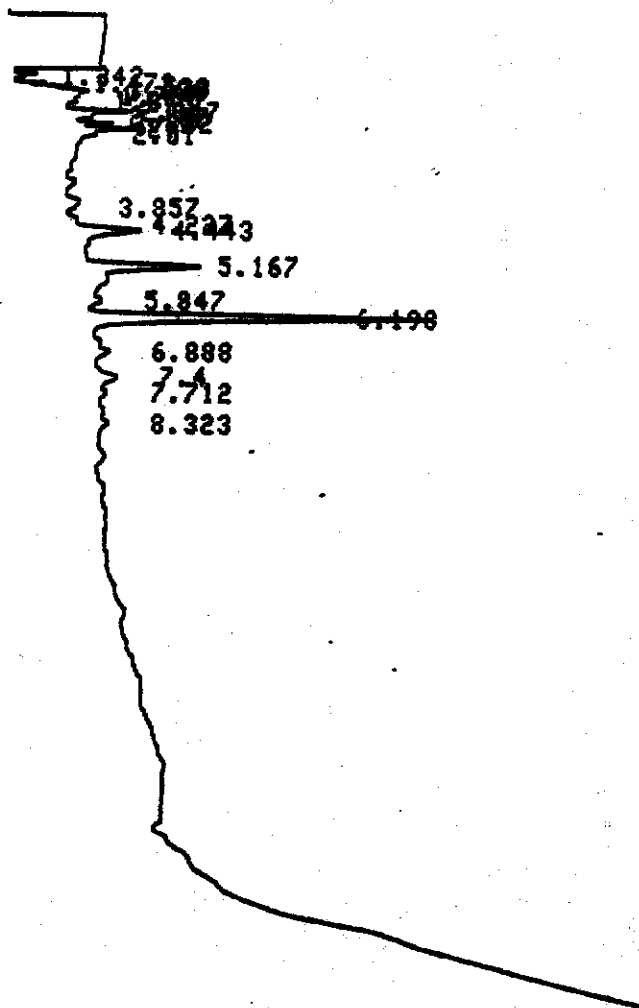
20 930EA1

DATE 97/08/20

TIME 22:21:25 ATTN 2

VAR-5

START



CHROMATOGRAM 1 MEMORIZED

CHROMATOPAC CR601
 SAMPLE NO 0
 REPORT NO 938

FILE 0
 METHOD 0041

PKNO	TIME	AREA	MK	IDNO	CONC	NAME
1	1.342	7298			13.8883	
2	1.473	2487	V		4.7326	
3	1.533	2141	V		4.0745	
4	1.623	5295	V		10.0762	
5	1.727	3703	V		7.0475	
6	1.845	2910	V		5.537	
7	2.047	5411	V		10.2972	
8	2.157	2642	V		5.028	
9	2.282	1727	V		3.2857	
10	2.4	2088	V		3.9733	
11	4.443	2147	V		4.0052	
12	5.167	3438			6.5434	
13	6.198	11262			21.4313	

ADIRONBACK ENVIRONMENTAL SERVICES

SAMPLE NUMBER

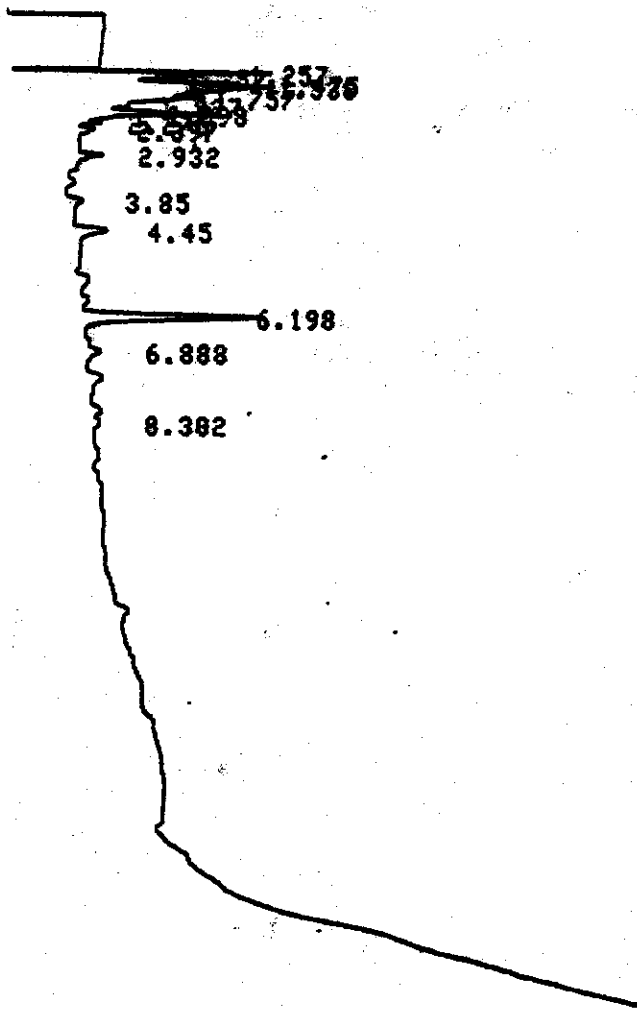
21 930EAT

DATE 97/08/28

TIME 22:45:09 ATTN 2

VAR-5

START



CHROMATOGRAM 1 MEMORIZED

CHROMATOPAC CR601
 SAMPLE NO 8
 REPORT NO 939

FILE 8
 METHOD 0041

PKNO	TIME	AREA	NK	IDNO	CONC	NAME
1	1.257	7822			12.8375	
2	1.357	4534	V		7.4745	
3	1.475	6164	V		10.1164	
4	1.538	14879	V		24.4183	
5	1.757	7784	V		12.7753	
6	1.927	3198	V		5.2349	
7	2.098	7388	V		12.1252	
8	2.275	1193	V		1.9572	
9	2.397	1098	V		1.8019	
10	4.45	1078			1.7697	
11	6.198	5782			9.4893	

ADIRONDACK ENVIRONMENTAL SERVICES

SAMPLE NUMBER

22 920 EA 3

DATE 97/08/20

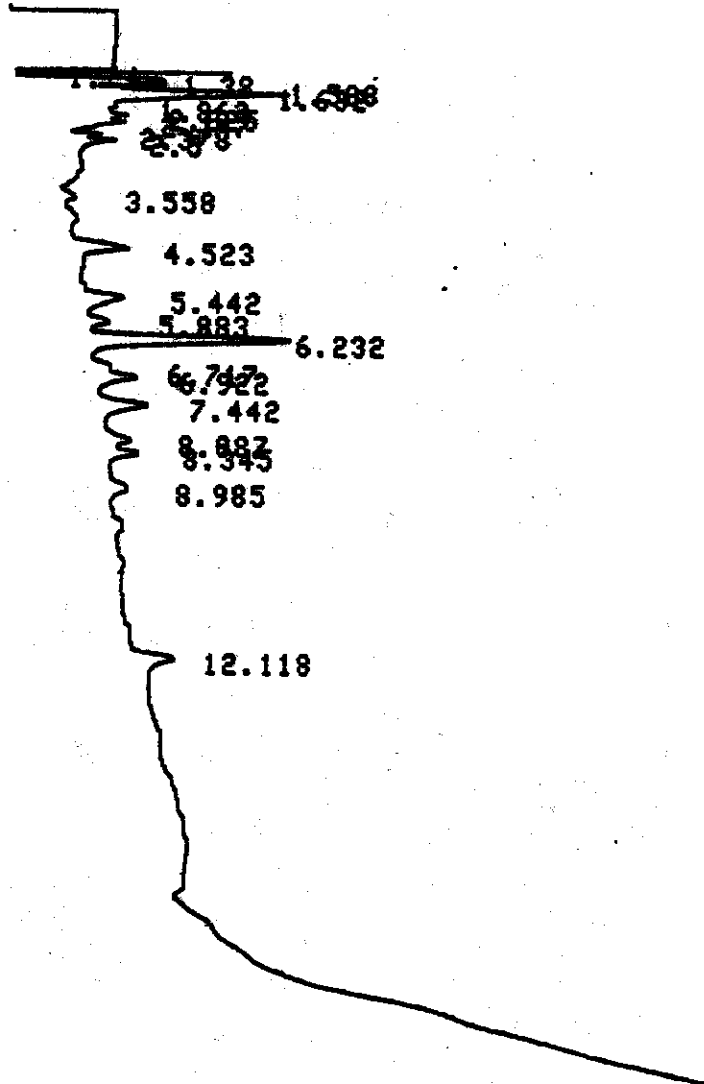
TIME 23:08:51

ATTN

2

VAR-5

START



CHROMATOGRAM 1 MEMORIZED

CHROMATOPAC CR601
SAMPLE NO 8
REPORT NO 940

FILE 0
METHOD 0041

PKNO	TIME	AREA	NK	IDNO	CONC	NAME
1	1.24	2711			4.0436	
2	1.38	10501	V		15.6638	
3	1.508	2513	V		3.7478	
4	1.632	16149	V		24.088	
5	1.862	3029	V		5.7121	
6	2.025	5067	V		8.752	
7	2.147	4538	V		6.7696	
8	2.378	1278	V		1.9064	
9	2.5	1571	V		2.344	
10	4.523	1797			2.68	
11	5.442	1640			2.4461	
12	6.232	7415	V		11.0605	
13	6.922	1652	V		2.4637	
14	7.442	2065			3.0802	
15	8.087	1036			1.546	
16	8.345	1039	V		1.55	
17	12.118	1439			2.1462	
TOTAL		67040			100	

U 4 4

ABIRONBACK ENVIRONMENTAL SERVICES

SAMPLE NUMBER

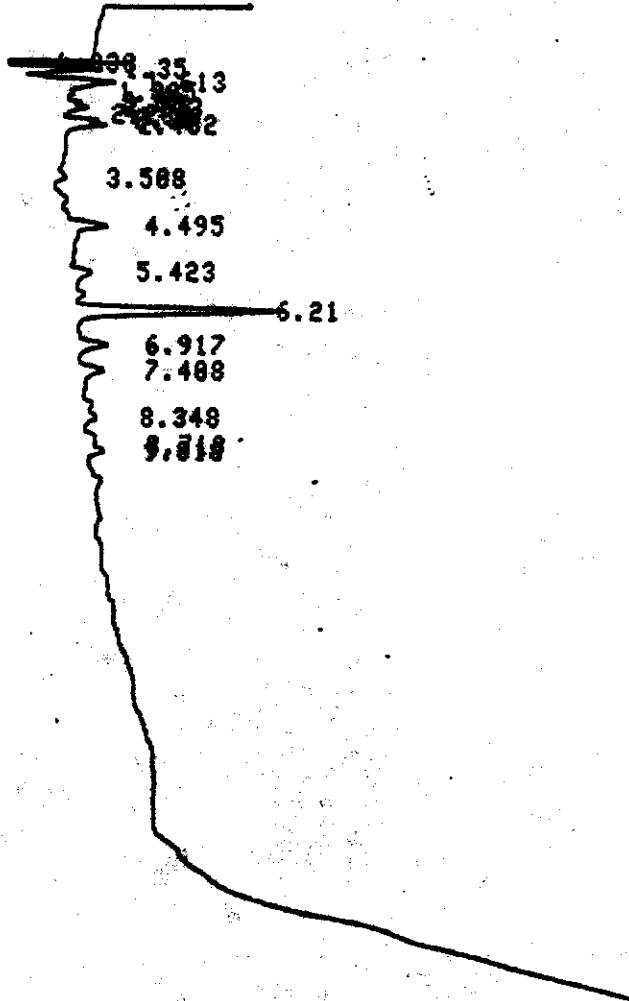
23 930 EAM

DATE 97/08/20

TIME 23:32:48 ATTN 2

VAR-5

START



CHROMATOGRAM 1 MEMORIZED

CHROMATOPAC CR681
 SAMPLE NO 0
 REPORT NO 941

FILE 0
 METHOD 0041

PKNO	TIME	AREA	NK	IDNO	CONC	NAME
1	1.238	2432			4.9976	
2	1.35	8446	V		17.3548	
3	1.613	12033	V		24.7266	
4	1.825	3388	V		6.9623	
5	2.02	4189	V		8.6875	
6	2.133	3266	V		6.7114	
7	2.262	1025	V		2.1063	
8	2.38	1723	V		3.5397	
9	2.482	2031	V		4.1743	
10	4.495	1256			2.5813	
11	6.21	7793			16.0136	
12	6.917	1083			2.2246	

TOTAL 48665

100

045

ADIRONDACK ENVIRONMENTAL SERVICES

SAMPLE NUMBER

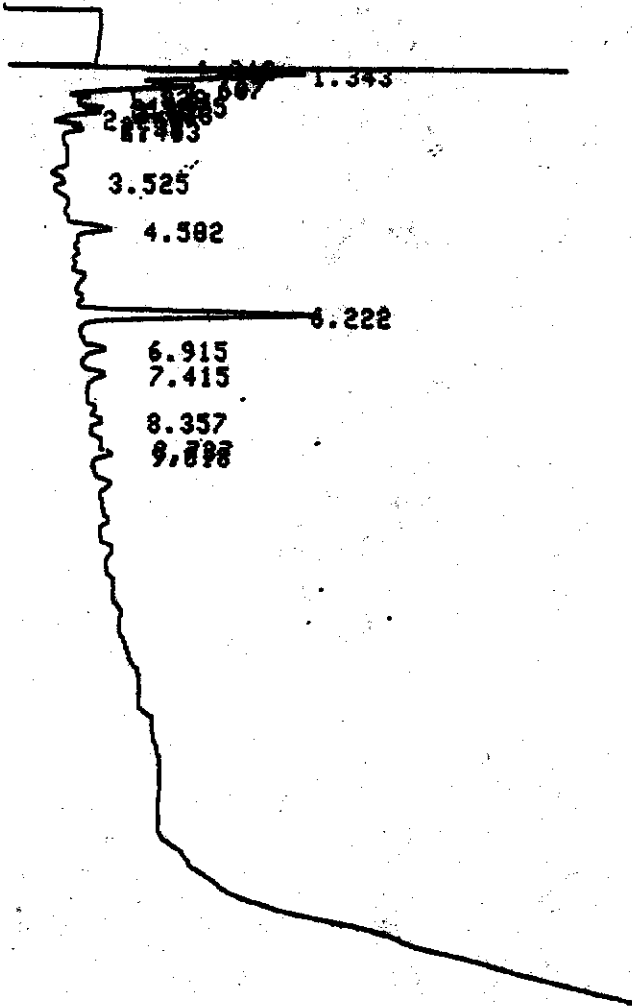
24 920ER5

DATE 97/08/28

TIME 23:56:00 ATTN 2

VAR-5

START



CHROMATOGRAM 1 MEMORIZED

CHROMATOPAC CR601
 SAMPLE NO 8
 REPORT NO 942

FILE 8
 METHOD 8041

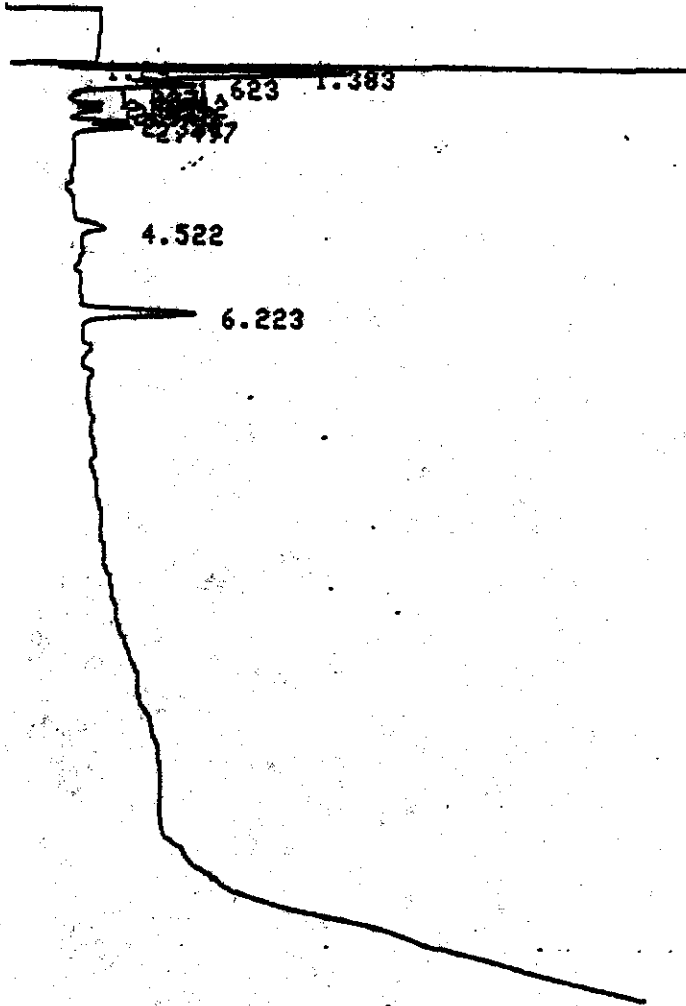
PKNO	TIME	AREA	NK	IDNO	CONC	NAME
1	1.242	4289			6.6562	
2	1.343	18971	V		38.0085	
3	1.607	15082	V		23.8575	
4	1.828	3638	V		5.7413	
5	1.925	2762	V		4.3696	
6	2.027	2455	V		3.883	
7	2.133	3293	V		5.2096	
8	2.38	1179	V		1.8651	
9	2.483	1059	V		1.6754	
10	4.582	1473			2.3292	
11	6.222	9106			14.4846	

TOTAL 20010

ADIRONDACK ENVIRONMENTAL SERVICES

SAMPLE NUMBER 25 930 ERG
 DATE 97/08/21 TIME 00:19:54 ATTN 2
 VAR-5

START



CHROMATOGRAM 1 MEMORIZED

CHROMATOPAC CR601
 SAMPLE NO 0
 REPORT NO 943

FILE 0
 METHOD 0041

PKNO	TIME	AREA	MK	IDNO	CONC	NAME
1	1.24	6203			9.7988	
2	1.383	21340	Y		33.708	
3	1.623	13242	Y		20.9173	
4	1.827	2915	Y		4.6047	
5	1.942	2148	Y		3.3935	
6	2.025	2687	Y		4.1174	
7	2.148	4512	Y		7.1266	
8	2.382	2078	Y		3.2826	
9	2.497	2596	Y		4.1006	
10	4.522	1120			1.7695	
11	6.223	4546			7.181	

047

CHROMATOPAC CR601
SAMPLE NO 8
REPORT NO 944

FILE 8
METHOD 0041

PKNO	TIME	AREA	MK	IDNO	CONC	NAME
1	2.398	2083	V		1.0524	
2	3.247	2617	V		1.3219	
3	3.895	3949			1.9949	
4	4.215	3158	V		1.5955	
5	4.49	1021	V		0.516	
6	4.65	7376	V		3.7266	
7	4.882	3089	V		1.5605	
8	5.083	2627	V		1.3273	
9	5.472	3544	V		1.7903	
10	5.848	3138	V		1.5853	
11	6.103	2997	V		1.5142	
12	6.728	5742	V		2.9008	
13	7.183	2277	V		1.1585	
14	7.482	1049	V		0.5298	
15	17.53	153271			77.4341	
	TOTAL	197937			100	

048

ADIRONACK ENVIRONMENTAL SERVICES

SAMPLE NUMBER

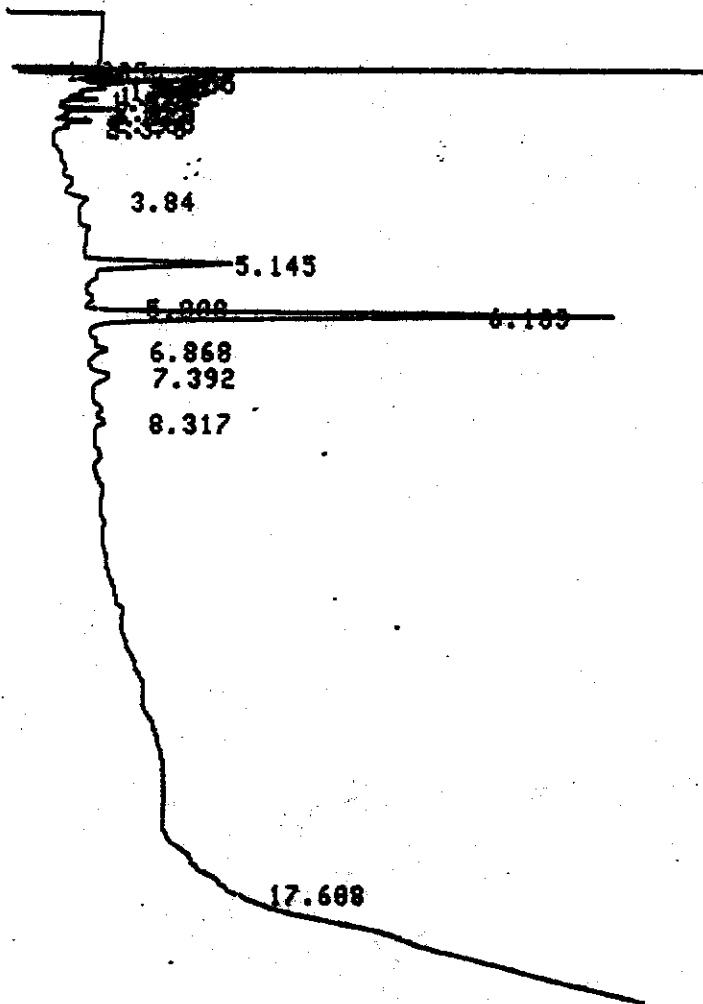
27 920 EAT

DATE 97/08/21

TIME 01:07:31 ATTN 2

VAR-5

START



CHROMATOGRAM 1 MEMORIZED

CHROMATOPAC CR601
 SAMPLE NO 8
 REPORT NO 945

FILE 8
 METHOD 0841

PKNO	TIME	AREA	NK	IDNO	CONC	NAME
1	1.235	6888			11.3924	
2	1.358	6728	V		11.1279	
3	1.455	3624	V		5.9929	
4	1.51	2432	V		4.022	
5	1.687	5236	V		8.6681	
6	1.782	3571	V		5.9864	
7	1.825	3154	V		5.2157	
8	2.025	4648	V		7.6875	
9	2.133	1751	V		2.8957	
10	2.263	1476	V		2.4411	
11	5.145	4353			7.1987	
12	6.183	16603			27.4598	

ADIRONDACK ENVIRONMENTAL SERVICES

SAMPLE NUMBER

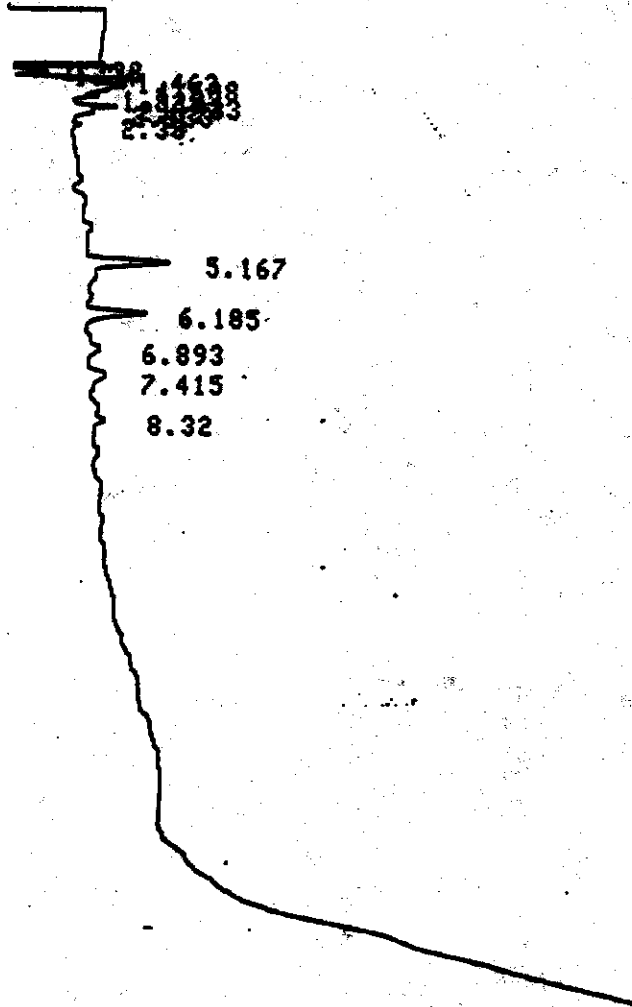
28 920 E 79

DATE 97/08/21

TIME 01:31:08 ATTN 2

VAR-5

START



CHROMATOGRAM 1 MEMORIZED

CHROMATOPAC CR601
 SAMPLE NO 0
 REPORT NO 946

FILE 0
 METHOD 0041

PKNO	TIME	AREA	MK	IDNO	CONC	NAME
1	1.238	2387			6.3402	
2	1.34	4715	V		12.5234	
3	1.463	2889	V		7.6741	
4	1.608	11934	V		31.7803	
5	1.828	2753	V		7.3139	
6	1.933	1821	V		4.8364	
7	2.027	2763	V		7.3404	
8	2.133	2279	V		6.0535	
9	2.38	1092	V		2.8998	
10	5.167	2849			7.5668	
11	6.185	2165			5.7511	

050

ADIRONDACK ENVIRONMENTAL SERVICES

SAMPLE NUMBER

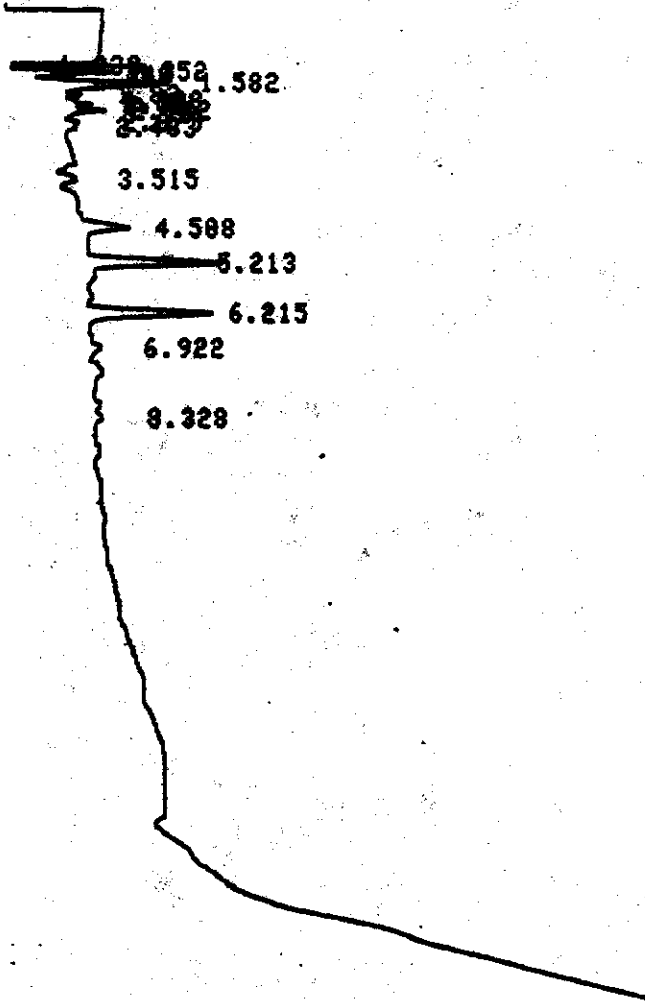
29 920 ER1

DATE 97/08/21

TIME 01:54:38 ATTN 2

VAR-5

START



CHROMATOGRAM 1 MEMORIZED

CHROMATOPAC CR601
 SAMPLE NO 0
 REPORT NO 947

FILE 0
 METHOD 0041

PKNO	TIME	AREA	NK	IDNO	CONC	NAME
1	1.238	2324			5.0125	
2	1.352	6162	V		13.2888	
3	1.448	1768	V		3.795	
4	1.582	12188	V		26.1135	
5	1.82	3124	V		6.7369	
6	1.938	2286	V		4.7566	
7	2.02	2135	V		4.6853	
8	2.142	4265	V		9.1979	
9	2.375	1865	V		2.2969	
10	4.508	1599			3.4487	
11	5.213	4798			10.3312	
12	6.215	4838			10.4168	

051

ADIRONDACK ENVIRONMENTAL SERVICES

SAMPLE NUMBER

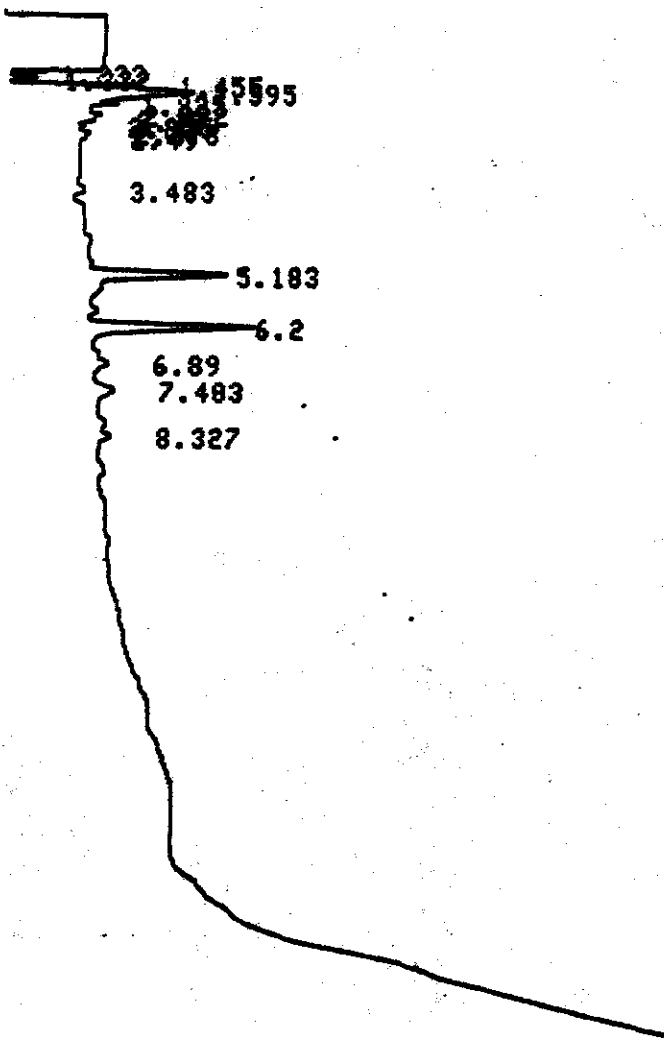
38 920 ER10

DATE 97/08/21

TIME 02:18:24 ATTN 2

VAR-5

START



CHROMATOGRAM 1 MEMORIZED

CHROMATOPAC CR601
 SAMPLE NO 0
 REPORT NO 948

FILE 0
 METHOD 0041

PKNO	TIME	AREA	MK	IDNO	CONC	NAME
1	1.233	1649			3.5499	
2	1.332	4634	V		9.9772	
3	1.455	2764	V		5.9512	
4	1.595	15488	V		33.1751	
5	1.825	3292	V		7.8884	
6	2.022	4985	V		10.7341	
7	2.12	2428	V		5.2269	
8	2.255	1896	V		2.3686	
9	5.183	4458			9.5992	
10	6.2	5730			12.3374	

ADIRONDACK ENVIRONMENTAL SERVICES

SAMPLE NUMBER

31 920 EA"

DATE 97/08/21

TIME 02:42:07 ATTN 2

VAR-S

START



CHROMATOGRAM 1 MEMORIZED

CHROMATOPAC CR601
 SAMPLE NO 0
 REPORT NO 949

FILE 0
 METHOD 0041

PKNO	TIME	AREA	NK	IDNO	CONC	NAME
1	1.233	2616			9.0416	
2	1.332	5158	V		17.8322	
3	1.755	12156	V		42.0211	
4	2.025	7713	V		26.6617	
5	2.377	1285	V		4.4434	
TOTAL		28928			100	

ADIRONDACK ENVIRONMENTAL SERVICES

SAMPLE NUMBER

32 920 EA12

DATE 97/08/21

TIME 03:05:46 ATTN 2

VAR-5

START

