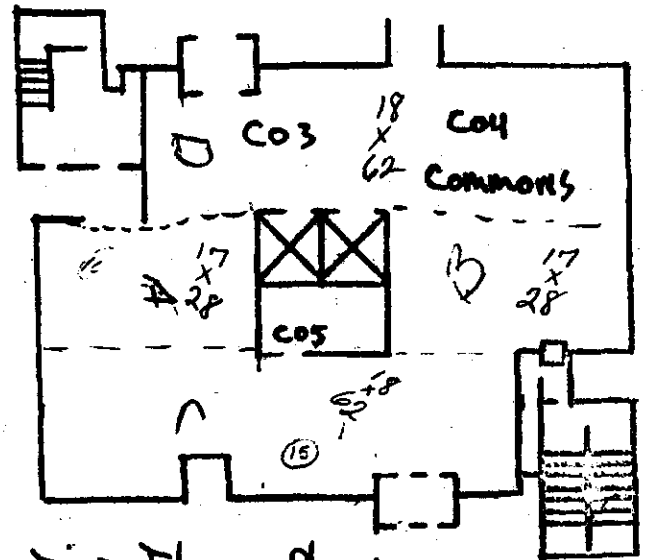


GROUND FLOOR PLAN



FIRST FLOOR PLAN

Building # 12 (FT)

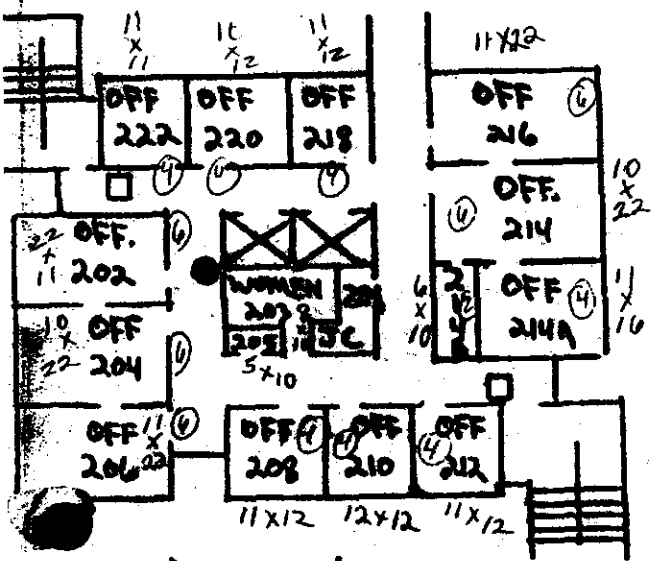
NIP

FACULTY TOWER

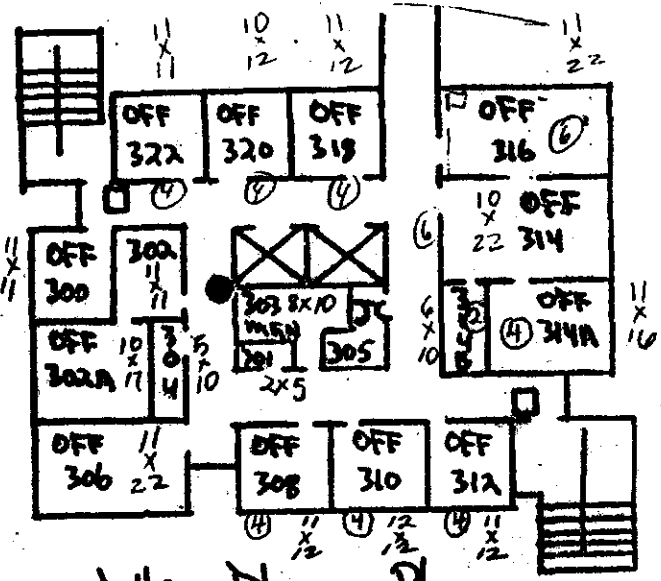
- FIRE ALARMS □
- PW. EXT. ●
- CO₂ EXT. ●
- ABC EXT. ●
- GENERATOR ▲
- FIRE PANEL ▲

SUNY New Paltz
Safety Office

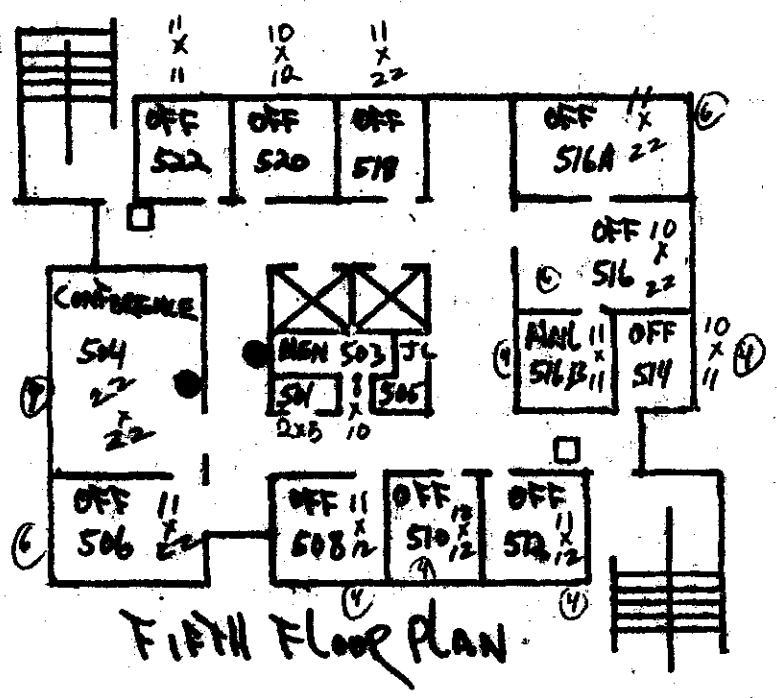
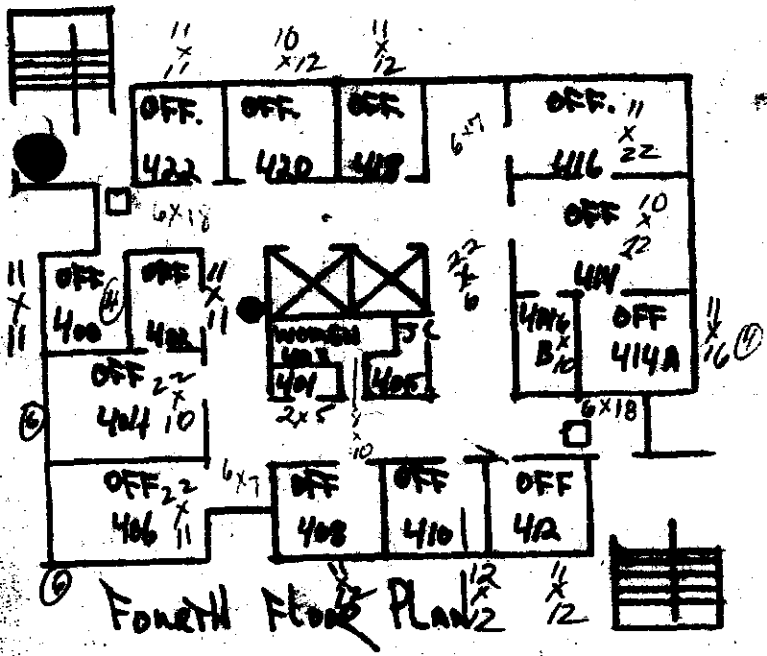
8/75



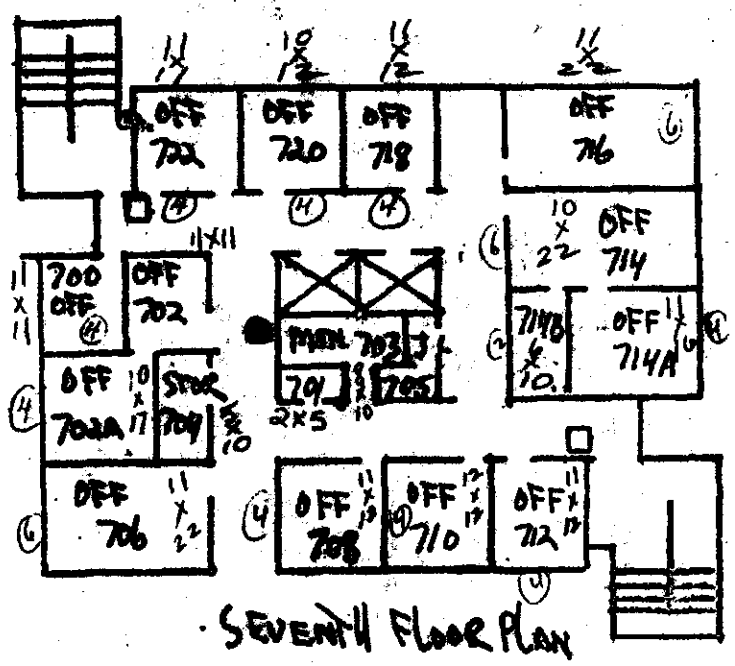
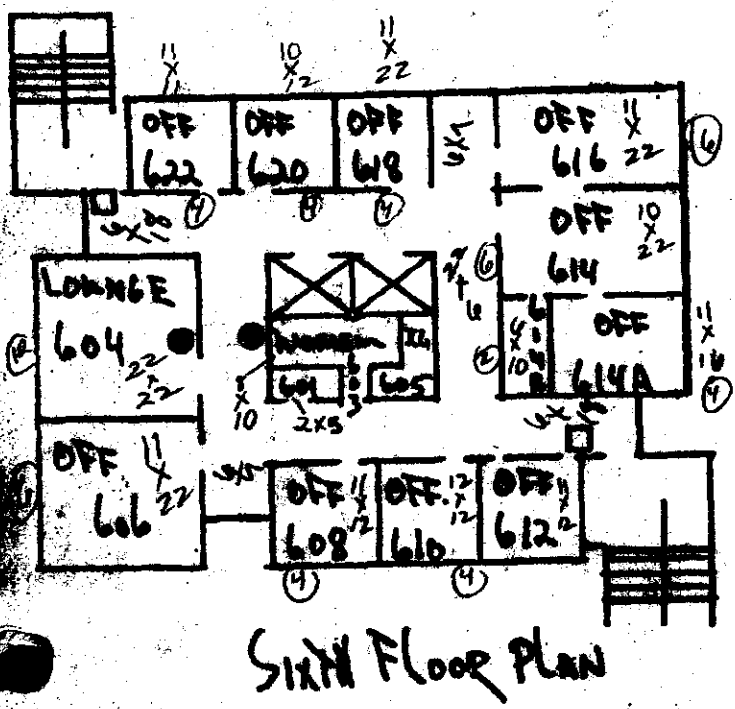
SECOND FLOOR PLAN



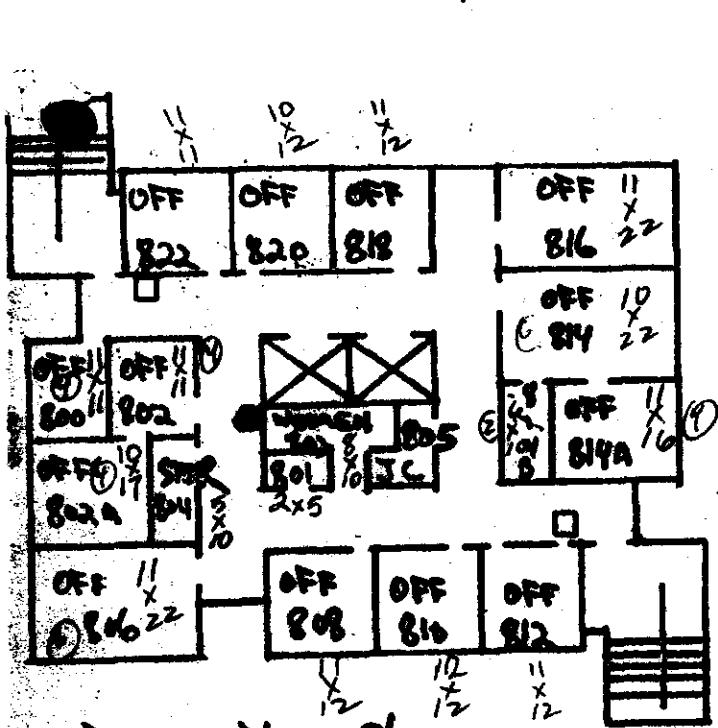
THIRD FLOOR PLAN



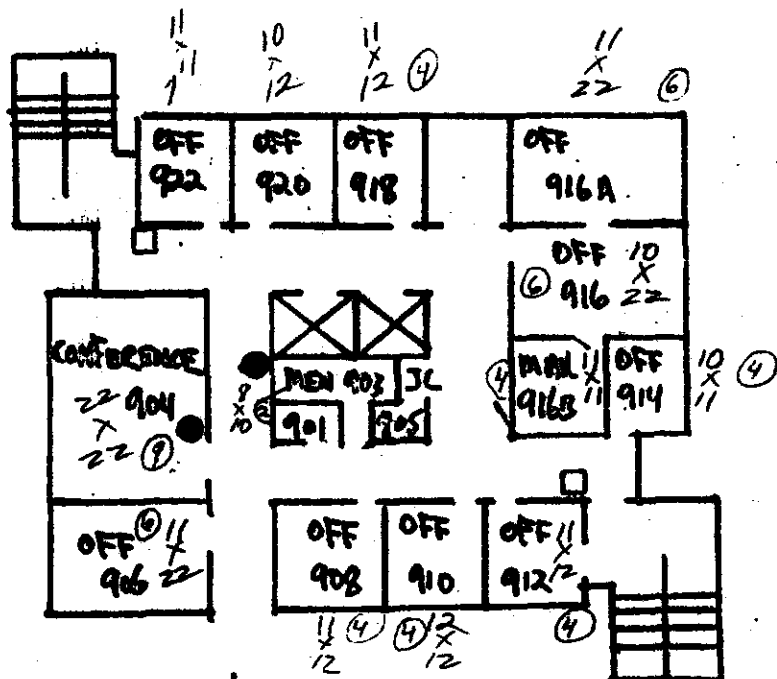
Faculty Tower



(NIP)

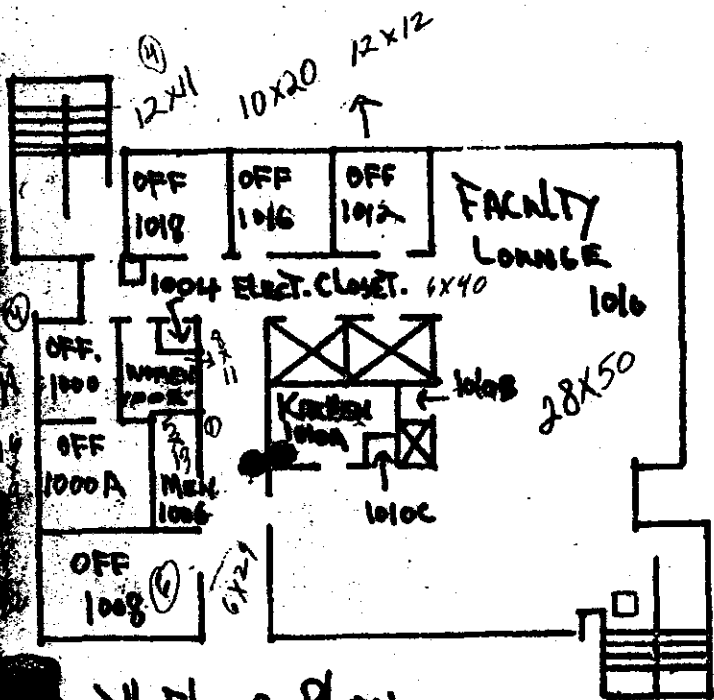


EIGHTH FLOOR PLAN

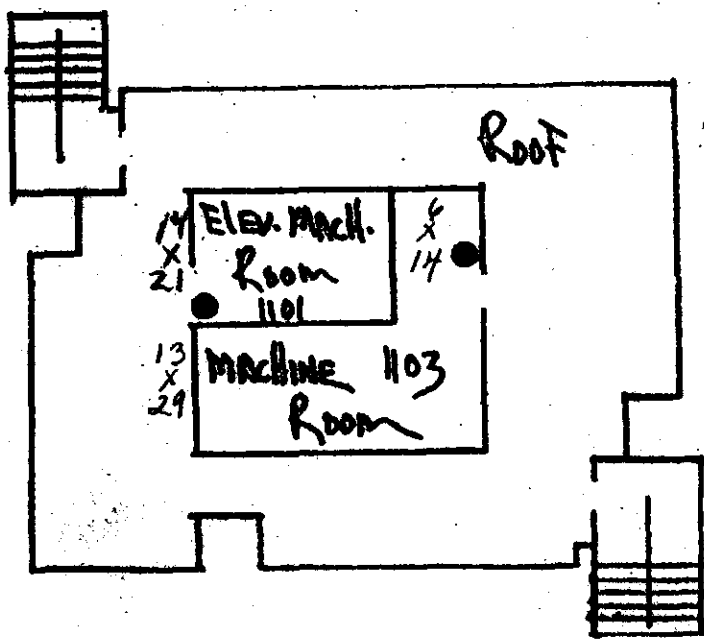


NINTH FLOOR PLAN

Faculty Tower



TENTH FLOOR PLAN



ROOF & PENTHOUSE PLAN



Client: Clean Harbors of Kingston, Inc.
Sample I.D.: SWS-35, FACULTY TOWER
Sample Type: Wipe

CHAS Lab #: 9201008-02N
Date Received: 01/02/92

Polychlorinated Biphenyls (PCBs)

Extraction Date: 01/02/91
Analysis Date: 01/02/92

Parameter	MDL	Concentration	Units
PCB - Aroclor 1016	1.0	ND	ug/100 sq cm
PCB - Aroclor 1221	1.0	ND	ug/100 sq cm
PCB - Aroclor 1232	1.0	ND	ug/100 sq cm
PCB - Aroclor 1242	1.0	ND	ug/100 sq cm
PCB - Aroclor 1248	1.0	ND	ug/100 sq cm
PCB - Aroclor 1254	1.0	ND	ug/100 sq cm
PCB - Aroclor 1260	1.0	ND	ug/100 sq cm

Notes: ND - Below minimum detectable level (MDL)
Wipe Area: 100 sq cm

The sample was mixed with hexane for 5 minutes. The resulting extract was analyzed by GC/ECD following EPA Method 8080.