



Fiscal Year Ending June 30, 2012

ENDOWMENT FUNDS **REPORT**



New Paltz
STATE UNIVERSITY OF NEW YORK

TABLE OF CONTENTS

WELCOME

Welcome to the inaugural edition of “The Endowment Funds Report for the State University of New York at New Paltz.” This report lists all the funds that have been created over the years, their purposes, and the market value of each fund (principal plus accumulated interest and appreciation) as of the end of Fiscal Year 2012, which ended on June 30, 2012.

An endowed fund can be established with a minimum of \$25,000. The money that is put into the endowed funds is never spent; only the interest earned by the money in the endowed fund is spent. Therefore, an endowed fund benefits the College, its students and faculty in perpetuity. The “Funds in Development” section lists funds that have been created and are in the process of attaining the \$25,000 current minimum threshold.

Please note: We have made every effort to double- and triple-check the information for accuracy in this inaugural edition. If changes or revisions are needed in future editions, please contact Eileen Bastien, director of donor relations, at 845.257.3957 or bastiene@newpaltz.edu.

Introduction	1
Goal of Endowment	5
Investment Objectives	5
Revenue/Support and Expenses	6
College of Liberal Arts & Sciences Endowments.....	7
School of Business Endowments.....	11
School of Education Endowments.....	13
School of Fine & Performing Arts Endowments	17
School of Science & Engineering Endowments.....	21
General Endowments	24
Funds in Development	33
Ways of Making A Gift	35
Index.....	42



OUR **VALUES**

At the State University of New York at New Paltz we are guided by a short list of values as we strive — relentlessly — to achieve our primary goal of providing an outstanding educational opportunity for our students.

THESE VALUES INCLUDE:

- A personalized college experience.
- A high standard of rigor and academic expectation.
- Intellectually capable and committed students.
- An open, diverse, and equitable college community.
- A spirit of exploration that prepares students for success.
- An environment that educates each student as a whole person.
- An intellectual and cultural hub in the Hudson Valley.

THERE IS CONSISTENT AND EXPANDING EVIDENCE THAT WE ARE ACHIEVING OUR GOAL:

5

commendations

We received full reaccreditation from the Middle States Commission on Higher Education in 2011, earning five commendations in specific areas of excellence.

OUR FACULTY AND STAFF are responsible for a growing list of awards and rankings, including:

7th
32nd

Among public masters institutions in the region

Among publics & privates

US News & World Report, 2013

Kiplinger's Guide, 2013

Select colleges
& universities

(some previously included SUNY campuses fell from the top 100 list)

{ 44
• OUT of •
500

TOP 100

2013
US News & World Report
Arts Graduate Programs

BEST
VALUE

Princeton Review's
"Best Value" Guide
2012

Top 75 public 4-year colleges/
universities in U.S.

Princeton Review's Guide, 2012
322 GREEN COLLEGES



enriched experience

The New Paltz experience is enriched by a *diverse* student population, more than **30 percent** of which comes from underrepresented groups.

88%

retention

Once we get students here we do a better job of helping them succeed:

- Our retention rate between the first and second years is 88 percent, compared to 75 percent for all 4-year institutions. It's 90.6 percent for Educational Opportunity Program students.
- And our retention rate for transfer students is the best in SUNY.



NATIONAL AVERAGES

Our four-year and six-year graduation rates are significantly above the national averages.

- We have been recognized by the *Chronicle of Higher Education* for being in the top 10 percent of 400 masters and doctoral institutions (2010) and for being Number 2 among 250 masters institutions (2003-2008).
- Our 6-year rate for African Americans is 64 percent, compared to a 42 percent national average.
- Our rate for Latino/Latina students is 72 percent, compared to a 49 percent national average.

AND WE ARE NOT SITTING ON THESE OR ANY OTHER LAURELS.
Even in these challenging economic times, we are investing in even higher levels of academic excellence:

Unlike many of our peers around the country, our faculty ranks are being renewed and expanded.

The State University of New York at New Paltz has been ranked No. 2 in the Affordable Colleges Online list of "Top 50 Affordable Colleges with a High ROI (2013)," a list of the nation's most affordable colleges with the biggest return on investment (ROI).

"This recognition from *Affordable Colleges Online* reflects our ongoing efforts to provide an excellent education to each of our students while also remaining sensitive to the expense of a college education. We are proud to receive another testimonial to the outstanding value of a New Paltz education," said L. David Eaton, Vice President of Enrollment Management at New Paltz.

Further, we are ensuring that funds will be available for faculty growth and program development; that our campus will remain beautiful, modern, and safe. And we are constantly reviewing practice and procedure to ensure we are getting the most impact from available resources.

THANK YOU

This report on the endowed funds that have been created by private support is intended as a celebration of that support as we list the endowed funds, their purposes and, in many cases, the names of individuals responsible for the funds.

All of this is evidence of the broad support the College enjoys and gives us confidence that we are on the right track and that the values that guide us are sound.

Our focus is always on our students and on providing them with the best opportunity to learn, grow, think new thoughts, and prepare for their lives ahead.

We have achieved much and are confident in our future in no small part because of the private support we have received from you — our alumni, faculty, staff, and friends over the years.

To all we say a sincere, “Thank you!”

GOAL OF ENDOWMENT

SUNY New Paltz believes that grants to be made in the future are as important as grants made today. This is consistent with the philosophy that this endowment is to exist in perpetuity and, therefore, should provide for grant making in perpetuity. To attain this goal, the overriding objective of this endowment is to maintain purchasing power. That is, net of spending, the objective is to grow the aggregate portfolio value at or above the rate of inflation over the endowment's investment horizon.

INVESTMENT OBJECTIVES

The investment objectives of the SUNY New Paltz Foundation are to manage its funds in a manner that will maximize the benefit intended by the donor and to generate a total return on assets that supports the programs of the College. The objective of the professional investment managers will be to maximize total return on the portfolio (appreciation and income) sufficient to preserve or increase the purchasing power of the assets for both current purposes and to ensure intergenerational equity and with a level of credit risk and market risk acceptable to the Foundation.

CONSOLIDATED STATEMENT OF ACTIVITIES

Revenue and Support

Contributions and gifts	\$1,532,157
Non-cash contributions	35,597
In-kind support	1,416,607
Investment (loss) return	(52,928)
Special events, net.....	116,355
Royalties	40,568
Rental.....	108,625
Other.....	50,368
TOTAL REVENUE AND SUPPORT	\$3,247,349

Expenses

Program.....	\$1,072,177
Scholarships.....	460,740
Institutional Support	595,768
Fundraising	511,235
TOTAL EXPENSES	\$2,639,920

Excess of Revenue and Support over Expenses	\$607,429
Change in Fair Value of Charitable Gift Annuity.....	(7,894)
Change in Net Assets	\$599,555

Net Assets

Beginning of Year	\$23,995,388
End of Year	\$24,594,883

COLLEGE OF LIBERAL ARTS
& SCIENCES **ENDOWMENTS**

Balances as of June 30, 2012

Endowed Recruitment Scholarship

“The generosity of so many has made so many opportunities possible during my time at New Paltz. It has allowed me to work closely with the Honors Program, engage in research, participate in the first-ever Student Advisory Group to the college president, work in the Summer Undergraduate Research program and now complete my Spring internship in Washington, D.C. I am overwhelmed with gratitude for all the support. Thank you!”

Joseph Bacchi '13
Philosophy Major
Highland, New York
2013 Commencement
Salutatorian

Bernard Aratowsky Memorial Scholarship

Established in 1986 by members of the History and Foreign Language Departments and also by family and friends. The award is designed to commemorate the contributions made by Dr. Aratowsky to promote the study of the classics.

MARKET VALUE: \$20,098*

Roger and Barbara Bowen Scholarship Endowment

This scholarship will be awarded to students attending SUNY New Paltz on a student visa sponsored by the Center for International Programs or accepted to the administered study abroad program.

MARKET VALUE: \$32,191

Russell S. Cleverley Memorial Fellowship Endowment

Established in 2001 by Luella and Donald Cleverly to honor the memory of their son, Russell S. Cleverly. This fellowship is open only to students accepted and matriculated in the Master of Arts, English program and preference will be given to applicants registering for 41590, Thesis in English.

MARKET VALUE: \$40,288

Leonard Eisenberg Memorial Scholarship Fund

Established in 1992, through the generosity of family and friends, in memory of Leonard Eisenberg of the Anthropology Department. The scholarship was created to help students majoring in Anthropology with an interest in Archeology.

MARKET VALUE: \$10,105*

Friends of the Asian Studies Endowment

Established in 2005 by Denis Simon to support initiatives the Asian Studies Program faculty deem would most benefit the program. These activities include promoting undergraduate involvement in faculty research, providing matching funds for faculty research grants, and offering fellowships and conference travel support to supplement the College and other resources.

MARKET VALUE: \$109,079

William Hauber Scholarship

Established by family, friends and alumni to encourage the continued study of the German language and the achievement of academic excellence for fully matriculated students majoring in German.

MARKET VALUE: \$7,902*

Eleanor Kuykendall Endowed Lecture Series

Established by friends and colleagues in memory of Eleanor Kuykendall, Professor of Philosophy (1967-1993). The Endowment is to be used to fund lectures in philosophy, including lectures in Professor Kuykendall's areas of scholarly interest: 20th century French philosophy, philosophy of language, and feminist theory.

MARKET VALUE: \$7,046*

Richard Ordway Memorial Endowment

Established in 1996 by Mary Jane Ordway, in memory of her husband to assist students who are majoring or minoring in Geology or Astronomy.

MARKET VALUE: \$5,974*

*This fund was created before the current \$25,000 funding threshold was established.

**James H. Ottaway Sr. Visiting
Professorship in Journalism**

Established in 2000 by Mary and James H. Ottaway, Jr., the holder of the professorship will be designated as the James H. Ottaway Fellow. The professorship will be held by distinguished journalists who will come to the SUNY New Paltz campus for periods of up to one year to engage students and the community in lectures, seminars, or formal courses about the use of the written word in the craft of journalism.

MARKET VALUE: \$1,311,922

**Mildred & Louis Resnick
Jewish Life Lecture**

Established in 1989 to enable the College and community to benefit in perpetuity from the presence of distinguished lecturers in the area of Jewish Studies and Jewish cultural traditions.

MARKET VALUE: \$332,3313

**Luigi & Anita Traverso
Endowment for Italian Studies**

Established by Luigi & Anita Traverso for students in their junior year who have completed intermediate language sequence courses. They must be an Italian Studies major and have spent at least one semester abroad at an Italian university.

MARKET VALUE: \$192,549



Accredited by AACSB International



**SCHOOL OF BUSINESS
ENDOWMENTS**

Balances as of June 30, 2012

Ruth and Raymond DeRoberts Memorial Scholarship

“Receiving this scholarship has made all the difference for me. Not only will the scholarship help me to afford my studies, and thus graduate with less burdening debt, it will shape my four years at New Paltz. It inspires me to do the best that I can while at New Paltz, knowing that I've received this scholarship from a loyal New Paltz alumna. The Ruth & Raymond DeRoberts Memorial Scholarship has given me the freedom to focus more on my studies and the inspiration to carry on the DeRoberts legacy at New Paltz. Thank you again!”

Miriam Ward '14
History Major
Rye, New York

Sean Geng Memorial Scholarship

Established in 1993, by family and friends, in memory of a Business Administration senior and a Rugby Club captain. This scholarship will help to provide scholarship support for New Paltz Rugby Club students.

MARKET VALUE: \$27,287

Donald Bishko Memorial Scholarship

Established in 1998 in honor of Dr. Donald Bishko, Dean of Academic Advising, by his family, colleagues, students and friends. This scholarship was created for full-time freshmen or full-time transfer students (preferably students whose education has been interrupted for a period of time) who intend to major in Business Administration or Accounting.

MARKET VALUE: \$41,278

School of Business Endowment

Established in 2006 by Dan and Diane Devine for the purposes of supporting the SUNY New Paltz School of Business.

MARKET VALUE: \$109,547

School of Business Trading Room & Technology Endowment

Established through the generosity of alumnus Kenneth Pasternak '77, to help provide a resource for School of Business students learning about capital markets.

MARKET VALUE: \$111,066



**SCHOOL OF EDUCATION
ENDOWMENTS**

Balances as of June 30, 2012

Mary Gallagher Burke Memorial Scholarship

“As a future teacher, I have a deep affinity for education. It is very important for me to be able to focus completely on school. This scholarship means that I can devote my full attention to my learning without the distraction and stress imposed by a job.”

Kimberly Stegner '13
Secondary Education Major
Clinton Corners, New York

The Baggerman Family Scholarship

The Baggerman Family Scholarship Fund memorializes the lives of William and Susanna Baggerman, parents of William Jr. and Susan. Susan M. Baggerman received her Bachelor of Science degree in Elementary Education in 1957, and a Certificate of Advance Study in Educational Administration and Supervision in 1972, from SUNY New Paltz. She was an elementary teacher for 36 years at the Newbridge Road School in North Bellmore, Nassau County. This scholarship was created to help a student who attended either North Bellmore (New York) or Pine Bush (New York) public schools and is enrolled in a program leading to certification in Elementary Education.

MARKET VALUE: \$64,678

Class of '47 Scholarship

Established in 1997 through the generosity of the Class of 1947 to directly assist a student of merit studying to become a teacher or an educational administrator.

MARKET VALUE: \$9,494*

Clionian Alumni Scholarship

Established in 2008, by Clio Sorority alumni to help provide scholarships to outstanding SUNY New Paltz education students in their pursuit of teacher certification.

MARKET VALUE: \$30,343

Matilda Cox Scholarship Endowment

Established in 2006 in memory of Matilda Cox, by her grandson Everton H. Henriques and his wife, Jeannie Irvine, for her encouragement, love, support, kindness and overall commitment. This scholarship was established for economically disadvantaged persons of color with a cumulative average of 85 or better.

MARKET VALUE: \$30,414

Frank and Gertrude Eckelt Education Administration Scholarship

This scholarship was created in memory of faculty emeritus Frank Eckelt and his wife, Gertrude. Applicant must be a graduate student fully matriculated in the Certificate of Advanced Studies.

MARKET VALUE: \$57,733

Gertrude M. Elliott Scholarship

Grace E. Elliott, a lifelong resident of New Paltz, passed away in 1997. She designated a portion of her estate to SUNY New Paltz for the establishment of a scholarship fund named in honor of her mother, Gertrude M. Elliott, a Clionian sister and a member of the class of 1926. The scholarship provides annual support for women students from either New Paltz or Yonkers, NY.

MARKET VALUE: \$364,670

Mary Gallagher Burke Scholarship

Established in 2002, through the generous bequest of alumna Mary Gallagher Burke '28 and her husband Mr. Arvid Burke, to help fund scholarships for outstanding students, preparing for careers in teaching or education.

MARKET VALUE: \$246,279

Ruth Mack Havens Scholarship

Established by a faculty member and named in honor of Ruth Mack Havens, a teacher of early childhood education and founder of the first Kindergarten and Primary Club. Recipients are chosen for their academic credentials and financial need.

MARKET VALUE: \$7,881*

Ronald F. and Flona J. Henriques Memorial Scholarship

Established in honor of Ronald F. and Flona J. Henriques, by their son, Everton H. Henriques, for their encouragement, love, support, kindness and overall commitment to providing a better life for close and extended family alike. This scholarship was created to help provide support for students of West Indian descent majoring in Education.

MARKET VALUE: \$31,337

William and Helen Kochant Writing Scholarship

Established in 1996 this scholarship is given to a worthy student studying elementary education and is particularly interested in writing books for children. The candidate must be an accepted freshman with a declared major in Elementary Education.

MARKET VALUE: \$32,518

*This fund was created before the current \$25,000 funding threshold was established.

The Betty Lyons Memorial Scholarship

Established in 2008 in honor of Betty Lyons, by her children, William “Bud” Walker, Lois Clark, Robert Walker, Janet Robertson, their spouses and Bud’s friends, Everton H. Henriques and Jeannie Irvine. This scholarship was created to help students majoring in Elementary Education from economically disadvantaged families.

MARKET VALUE: \$28,548

Matteson Lecture Series

Established in 1981 by his sons, Benjamin H. Matteson, Jr.; Silas H. Matteson; and Robert S. Matteson in concert with The College at New Paltz Foundation for the express purpose of sponsoring a series of lectures, presentations and symposia.

MARKET VALUE: \$16,330*

Leslie Oakley Memorial Scholarship

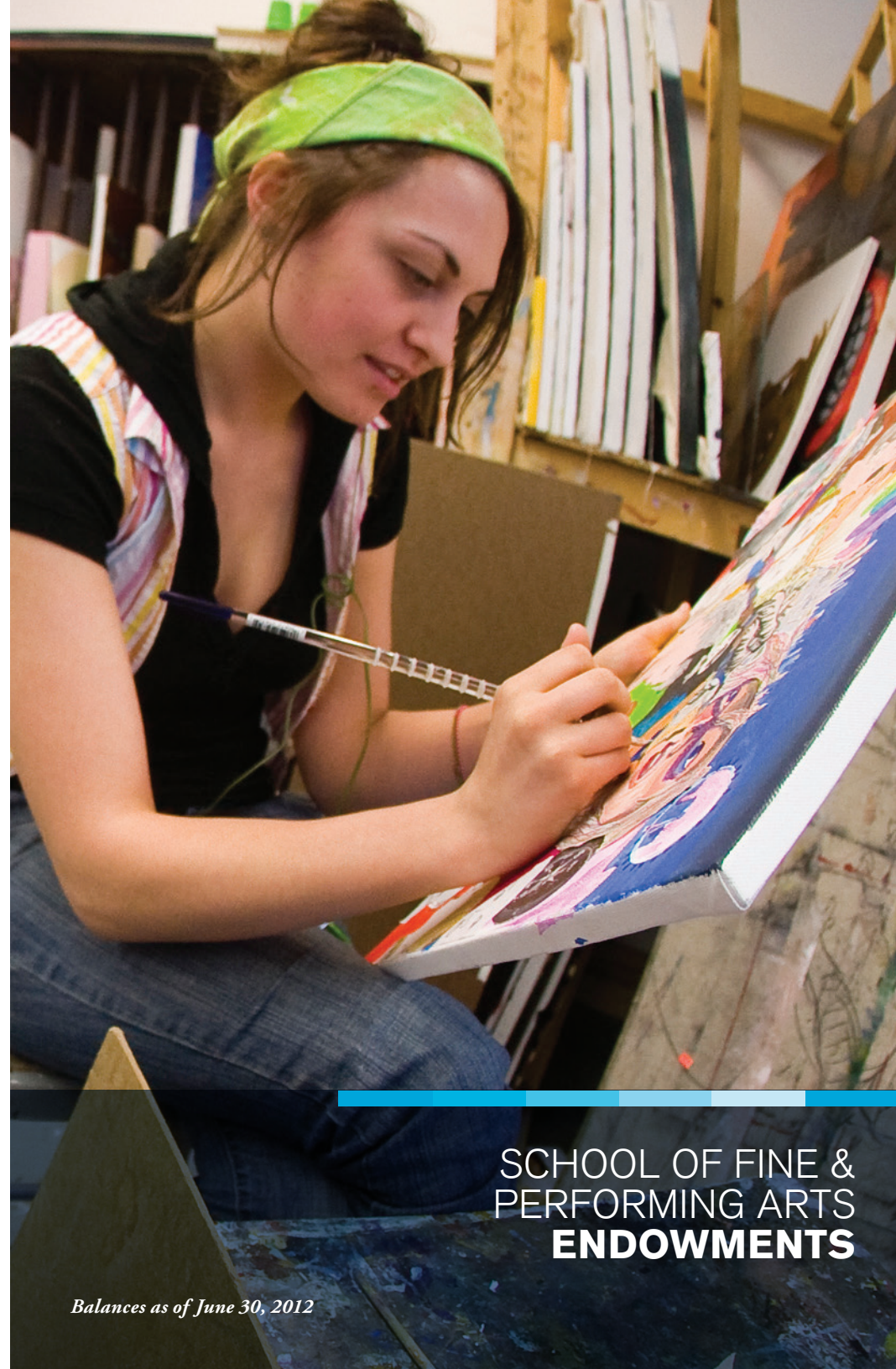
Established in 2000 in honor of Leslie Oakley, by his daughter JoAnn Oakley McCreight and his son, Quentin, this scholarship was created to help education students in their senior year who have displayed proven academic ability.

MARKET VALUE: \$22,159*

Olga Santora Scholarship Endowment

Established in 2012, through a bequest from Dr. Olga Santora, founder of the SUNY New Paltz Literacy Program. Dr. Santora was dedicated and committed to education during her tenure. This endowment will profoundly impact the lives of graduate students, the work of the college and the wider Hudson Valley community where recipients will serve as educational leaders and facilitators of learning.

MARKET VALUE: \$416,273



SCHOOL OF FINE &
PERFORMING ARTS
ENDOWMENTS

Balances as of June 30, 2012

**This fund was created before the current \$25,000 funding threshold was established.*

Luigi and Anita Traverso Italian Studies Scholarship in Photography

“This scholarship has enabled me to truly focus on pursuing my artistic goals without having to worry about where the money will come from. Thank you for the opportunity to help me prepare for my BFA Thesis.”

Gabrielle Stein '12
Photography Major
Ballston Lake, New York

Morgan Anderson Endowment

Established in 2003 by Arthur A. Anderson to promote the art and artists of the Hudson Valley and Catskill regions including art and artists of the Historic Woodstock Art Colony.

MARKET VALUE: \$94,703

Joe & Jean Badalucco Outstanding Achievement Theatre Scholar

Established in 2003 in honor of Joe and Jean Badalucco by their son, Michael Badalucco. This award is to be made to an outstanding junior student who has exhibited a dedicated work ethic and has an active involvement in the Theatre Arts Department.

MARKET VALUE: \$36,303

Sara Bedrick Endowment

Established in 2002 by Sara Bedrick to assist the Samuel Dorsky Museum of Art achieve its mission to (1) support and enrich the academic programs at New Paltz, (2) to present and exhibit a broad range of world art for study and enjoyment, and (3) to serve as a center of Hudson Valley arts and culture.

MARKET VALUE: \$383,466

Arthur Bruce Bennett Drama Scholarship

Established by a colleague, Rebecca McKenna, and named for the chairman of the English Department and advisor to the drama society. Awarded to a sophomore or junior who has made a distinguished contribution to the field of drama.

MARKET VALUE: \$19,553*

Ruth Bennett Art Scholarship Endowment

This scholarship was established for a deserving sophomore or higher who has a minimum of a B average in art.

MARKET VALUE: \$6,307*

Alice and Horace Chandler Art Acquisition Endowment Fund

Established in 2007 to provide support for Dorsky Museum acquisitions, funds from this endowment are currently used to purchase one or more works annually from The Dorsky's ongoing Hudson Valley Artists series of exhibitions.

MARKET VALUE: \$56,337*

Kenneth Davenport Endowment

Established in 2007 by William Davenport to support the "Kenneth Davenport Residency for New American Music" at SUNY New Paltz.

MARKET VALUE: \$127,465

Dorsky Museum Endowment

Established to help provide general support to the Dorsky Museum.

MARKET VALUE: \$44,126

Frank & Gertrude Eckelt Fine Arts Memorial Scholarship

This scholarship was created in memory of faculty emeritus, Frank Eckelt and his wife, Gertrude. Applicant must be a fully matriculated senior showing outstanding ability in the fine arts, preferably in the field of sculpture.

MARKET VALUE: \$57,698

John L. & Jeanne L. Fitzgerald Memorial Scholarship

Established in 2001 in honor of John L. and Jeanne L. Fitzgerald, by their family (Everton H. Henriques, Jeannie Irvine, Tamsin (Fitzgerald) Wolf and Michael Fitzgerald), for their love, support and commitment to providing cultural enlightenment, through his acting and art work and her poetry and music.

MARKET VALUE: \$41,010

Howard Greenberg Endowment

Established in 2004 by Howard Greenberg to be used for the purposes of exhibiting, acquiring, interpreting, and conserving one of The Dorsky Museum's significant collection strengths: photography holdings.

MARKET VALUE: \$170,524

Marion Harding Scholarship

Named for Marion Harding, who joined the faculty in 1928 and retired in 1964. Her final contribution to the Music Department was a generous bequest, which provides the Marion Harding Scholarships for applied music lessons. Recipients will be chosen by the Music Department faculty on the basis of demonstrated financial need, skill, and effort.

MARKET VALUE: \$23,416*

*This fund was created before the current \$25,000 funding threshold was established.

James and Mary Ottaway Hudson River Catalog

Established in 2007 by James and Mary Ottaway, this endowment supports the publication of catalogs related to exhibits of Hudson Valley/Catskill Mountain Regional Artists, past and present.

MARKET VALUE: \$223,607

New Paltz Art History Alumni Lecture

Established in 1992 and supported in part by Hugo Munsterberg, an Oriental Art expert and professor at New Paltz, writer and collector to help provide Art History alumni lectures at New Paltz.

MARKET VALUE: \$4,151*

Gary and Janaki Patrik Music Endowment

Established by Gary and Janaki Patrik to help highly deserving music students with financial need.

MARKET VALUE: \$24,950

Piano Summer Endowment

Established in 1999 for the support of the Piano Institute and Summer Festival.

MARKET VALUE: \$364,021

Linda A. and Thomas P. Stokes Memorial Scholarship

Established in 2006 in honor of Linda A. & Thomas P. Stokes by Everton H. Henriques and his wife, Jeannie Irvine, for their kindness, encouragement and support during their college years. The candidate for this scholarship must be an accepted student majoring in music or music-related discipline and have a cumulative average of 85. This award is based on merit with a strong emphasis on financial need and will be used by Admissions as a recruitment scholarship.

MARKET VALUE: \$29,143

Neil C. Trager Director's Endowment

Established in 2002 by Karen Dorsky with subsequent support from others in honor of Neil C. Trager, founding director, to support the director of the Samuel Dorsky Museum of Art in the achievement of its mission.

MARKET VALUE: \$441,838



SCHOOL OF SCIENCE & ENGINEERING **ENDOWMENTS**

Balances as of June 30, 2012

**This fund was created before the current \$25,000 funding threshold was established.*

Joseph Y. Resnick Memorial Scholarship

“I am a full-time student with a part-time job. Receiving this scholarship is great in helping make college more affordable to me. With reduced expenses for college tuition, I can work fewer hours per week, which allows me to have more time to focus on my studies. I plan on one day becoming a Medical Physicist. Thanks to the Joseph Y. Resnick Memorial Scholarship, this goal will be possible.”

Jeffrey Snyder '13
Physics Major
Wallkill, New York

Dr. James Campion Memorial Scholarship

Established in 2001 by Everton H. Henriques '78 (former student and friend), Dr. Campion's wife, Carol, family, co-workers, students and friends to honor the memory of Dr. James J. Campion, Associate Professor of Chemistry, for his dedicated service. This scholarship is awarded to freshman or continuing matriculated students majoring in the physical sciences with an ultimate goal of teaching. This award is based primarily on merit, with a secondary consideration given to students with financial need.

MARKET VALUE: \$33,147

Jean M. and Howard A. Doty Mathematics Scholarship

Established in 1996, by Lynne Doty '75 in memory of her parents Jean and Howard to help support students majoring in mathematics.

MARKET VALUE: \$32,051

William J. and Nancy Jean Irvine Scholarship

Established in 1999 in honor of William J. (Bud) and Nancy Jean Irvine, by their daughter, Jeannie Irvine, her husband, Everton H. Henriques, and sister Dorothea M. Bailie for their love, support and dedication to family, friends and to their Lower Burrell, Pennsylvania community.

MARKET VALUE: \$36,981

John L. Jankiewicz Memorial Scholarship

Established in 2010, in honor of John L. Jankiewicz by his friend, Everton H. Henriques, John's wife, Maria, co-workers, family and friends in memory of John L. Jankiewicz, resident of Highland, NY. Mr. Jankiewicz grew up and worked in Highland as the Sewer and Water Administrator for the town. John was always interested in the safety and health of his community and as such had strong environmental concerns. To honor his efforts in the community, a scholarship was created to provide scholarship support for Highland High School graduates attending New Paltz and majoring in the physical sciences with preference given to Environmental Studies.

MARKET VALUE: \$32,612

Resnick Engineering

Established in 1995 by Louis and Mildred Resnick primarily to support the engineering program at SUNY New Paltz.

MARKET VALUE: \$1,108,663

Thomas Santoro Memorial Scholarship

This award is designed to recognize Dr. Santoro's years of service and to promote the study of biology. The recipient must be a junior or senior, majoring in biology with a concentration in microbiology.

MARKET VALUE: \$6,695*

Smolen Observatory Endowment

Established through a generous bequest from Muriel Smolen, wife of avid astronomer who constructed his telescope's optics and iron framework while working at the American Museum-Hayden Planetarium in the 1930s. This fund will help to maintain the Smolen Observatory facility.

MARKET VALUE: \$204,819

*This fund was created before the current \$25,000 funding threshold was established.

THE SUNY NEW PALTZ FOUNDATION

supports a wide range of programs and activities across the campus. The Foundation exists solely to enhance the educational experience available at SUNY New Paltz.



GENERAL & OTHER
ENDOWMENTS

Balances as of June 30, 2012

Celebrating New Paltz Gala Scholarship

“As a single mother back in school, higher education has been a longtime dream of mine. I was pleasantly surprised to be selected as the recipient of this award. It feels nice when hard work is noticed and appreciated. This scholarship will purchase all of my books and supplies this semester, and also greatly help with the cost of the commute.”

Andrea Pacione '14
Art Studio Major
Middletown, NY

Arethusa Alumnae Endowment

Established in 1988 on behalf of The Arethusa Sorority Alumnae Association as an endowment to support the Arethusa Sisters Scholarship and Departments of Fine and Performing Arts and Liberal Arts and Sciences.

MARKET VALUE: \$49,305

Eli & Susan Basch DASES Scholarship

Established in 1995 by Eli and Susan Basch to financially support the Distinguished Alumni and Supporters Endowed Scholarships program (DASES). This scholarship is awarded to an incoming freshman who has demonstrated academic achievement.

MARKET VALUE: \$77,934

“Peg Leg” Bates Memorial Scholarship

Established in 1990 by Louis and Mildred Resnick in honor of their friend “Peg Leg” Bates. This scholarship provides financial support to freshman students who represent ethnic minorities, have financial need and achieved superior academic records.

MARKET VALUE: \$34,828

Francis X. Cahill Endowment

Established in 1997 by Francis X. Cahill, a 1952 SUNY New Paltz graduate, to be awarded to a worthy graduate of Kingston High School planning to attend SUNY New Paltz.

MARKET VALUE: \$128,957

CAS Golf Tournament Endowed Scholarship

Established through the proceeds of the annual College Auxiliary Services Golf Tournament to help recruit academically talented students to SUNY New Paltz.

MARKET VALUE: \$304,581

CAS Pepsi Endowed Scholarship

A merit-based scholarship established by the College Auxiliary Services (CAS) in collaboration with Pepsi of the Hudson Valley to be awarded to worthy and deserving students who have been accepted for admission to SUNY New Paltz.

MARKET VALUE: \$418,775

Celebrating New Paltz Gala Scholarship Endowment

Established in 2003, in recognition of the integral relationship between the three communities of New Paltz; the State University, the Town and the Village, this recruitment scholarship was established in celebration of 325 years of community.

MARKET VALUE: \$171,120

Celebrating New Paltz Regional Scholarship

Created in 2008, through the support of the SUNY New Paltz Gala, this scholarship helps to recruit undergraduate students to SUNY New Paltz who are residents of Ulster, Dutchess, or Orange counties.

MARKET VALUE: \$318,527

Simon & Evelyn Crawford Gluckman Scholarship

This fund was established by the Gluckmans to support academic achievement in college and community service among students. Evelyn Gluckman '58, was an alumna of SUNY New Paltz, a former member of the board of directors of the Alumni Association, playwright and a dedicated teacher.

MARKET VALUE: \$87,878

Crossing the Finish Line Endowment

Established in 2012, through the generosity of Nancy (Hahn) Moore '64 (Elementary Education) and her husband, David. This endowment fund will help students who are encountering unforeseen financial difficulties to remain in school. This scholarship will provide emergency assistance to those students facing a major crisis that impacts their ability to finance the remainder of their education at New Paltz.

MARKET VALUE: \$49,929

Lucy Delgado DASES Scholarship

Established in 1998 by Jane L. Delgado, '73, in honor of her mother, Lucy. Available to entering full-time freshmen or full-time transfer students of Hispanic origin.

MARKET VALUE: \$20,602*

Ruth and Raymond DeRoberts Memorial Scholarship

Established through the generous bequest of alumna Ruth DeRoberts, a resident of Yonkers whose desire was to help SUNY New Paltz recruit public high school students from the City of Yonkers and Rye public high schools.

MARKET VALUE: \$1,212,346

Robert Durkin Memorial Scholarship

Named by friends, colleagues and family in memory of Robert Durkin, a Physical Education faculty member. This award is designed to recognize and encourage the characteristics of sportsmanship, leadership, and enthusiasm that Mr. Durkin so exemplified.

MARKET VALUE: \$8,695*

Frank G. Elliot Scholarship

Established in 1998 by Frank G. Elliot, to support women residents of Ulster County pursuing a degree at SUNY New Paltz. This scholarship shall continue to be awarded on an annual basis to the original recipient for the remainder of her course.

MARKET VALUE: \$61,305

Faculty Development Endowment

SUNY New Paltz's rich tradition in science, education, business, the arts, and more has long been nurtured by a commitment to top-notch researchers and instructors. This endowment rewards distinguished faculty members for their work in the classroom and their important research and contributions to their field.

MARKET VALUE: \$90,048

Trudy Resnick Farber Memorial Scholarship

Established in 1989 by Harry and Marcia Resnick of Ellenville in memory of their daughter Trudy Resnick Farber. Priority will be given to an Ellenville High School student with financial need.

MARKET VALUE: \$63,862

Fleet Bank Endowed Scholarship

Established in 2000 by Fleet Services Corporation, Fleet Bank Endowed Scholarship is to be awarded to an incoming freshman who has demonstrated academic achievement and financial necessity.

MARKET VALUE: \$60,917

Jim Fredricks Endowment

Established in 1989 by College Auxiliary Services (CAS) to honor the late Jim Fredricks, beloved Executive Director of College Auxiliary Services. Available to SUNY New Paltz students who are employed by CAS or one of their vendors. Recipient must be and remain a participant in the CAS major meal plan.

MARKET VALUE: \$195,807

Jim Fredricks CAS Student Employee Scholarship

Established in 1995 by the family and friends of the late Jim Fredricks, a much beloved executive director of College Auxiliary Services. This scholarship will be awarded to a worthy student from New Paltz High School or Ulster County planning to study at SUNY New Paltz.

MARKET VALUE: \$16,788*

**This fund was created before the current \$25,000 funding threshold was established.*

Barbara Geider
Endowed Scholarship

Established in 2003 by Barbara and William Geider for the purpose of recruiting and retaining academically talented undergraduate students by providing renewable scholarship awards.

MARKET VALUE: \$64,445

Susan B. Healey (Sposato)
Endowed Scholarship

Established in 2002 by Matthew Healey in memory of Susan to help New Paltz recruit and retain academically talented incoming freshmen.

MARKET VALUE: \$53,793

Freda Heinz '30
Memorial Scholarship

Established through the generous bequest of alumna, Freda Heinz, '30 in support of education students.

MARKET VALUE: \$216,599

Arnold Lent Memorial Endowment

Established in 1993 by the Division of Health, Physical Education, Athletics & Recreation, the recipient of this scholarship must be a fully matriculated junior or senior with a cumulative grade point average of 2.5, with dedicated service to the recreation and/or intramural programs. The recipient should reflect the personal characteristics of Arnold Lent—courage, dignity, dedication, optimism, enthusiasm and humility.

MARKET VALUE: \$6,740*

Paul F. Murphy Scholarship

Established in 1985 by his family and friends and named for the late Judge Paul F. Murphy. This recipient must be a graduating senior, majoring in pre-law and preference is given to year-round residents of the mid-Hudson region.

MARKET VALUE: \$4,565*

Orenstein DASES Scholarship

Established in 1996, by former Foundation Board member, Dr. Bruce Orenstein '68 and his wife Sandra Orenstein '68. This award will be used to support incoming freshmen at SUNY New Paltz.

MARKET VALUE: \$10,782*

Joan Palladino Endowed
Scholarship Fund

Established as a testamentary gift by Joan E. and William M. Palladino for students who are residents of New York State and have graduated high school in Massapequa; Nassau County; Highland; Ulster County, or Dutchess County.

MARKET VALUE: \$31,085

Recruitment Scholarship
Endowment

Established to help recruit academically talented students to SUNY New Paltz.

MARKET VALUE: \$97,678

Joseph Y. Resnick Scholarship

Established through the generosity of Ellenville philanthropists Louis and Mildred Resnick, this scholarship was created to assist worthy students planning to enter SUNY New Paltz.

MARKET VALUE: \$642,294

Mildred and Louis Resnick
Scholarship Fund

Established through the generosity of Ellenville philanthropists Louis and Mildred Resnick, this scholarship was created to assist students majoring in music, theater arts, art studio, or humanities.

MARKET VALUE: \$64,260

Sojourner Truth Undergraduate
Scholarship Fund

Established in 2004 by the Campus Auxilliary Services (CAS) to assist in recruitment and retention of academically talented undergraduate students by providing renewable scholarship awards.

MARKET VALUE: \$121,161

SUNY New Paltz Legacy
Scholarship Endowment

Established through the generous bequests of the following faculty and friends of SUNY New Paltz: Vincent Tomaselli, Constance Von Wock, Norman Studer, Charles Geibel, William J. Haggerty, Walter Reuther, Erna Lynne Heyer, Brian Parsons, Thomas and Marie Bell, and Harold C. Storm.

MARKET VALUE: \$98,602

**This fund was created before the current \$25,000 funding threshold was established.*

Dr. Margaret Wade-Lewis
Memorial MRP Scholarship

Dr. Margaret Wade-Lewis, one of the founders of the Black Studies Department, Director of the Scholars Mentorship and Minority Recruitment Programs, passed away in December 2009. In honor of her passion and dedication to helping academically talented student from under-represented populations, the MRP Scholarship Endowment was named in her memory to assist students in the Minority Recruitment Program.

MARKET VALUE: \$157,090



FUNDS IN
DEVELOPMENT

Balances as of June 30, 2012

In addition to the funds that have achieved the College's current \$25,000 funding threshold, the following accounts are in the process of funding:

Angelos V. Patsis
Memorial Scholarship

In honor of Dr. Angelos V. Patsis, retired professor of Chemistry for his dedication as a loving husband, father and teacher, this endowment was established by Everton H. Henriques, Dr. Patsis' beloved wife, Angelika, their four sons, family members and friends. This scholarship will help students who are majoring in the physical sciences with preference given to chemistry majors.

MARKET VALUE: \$9,656

Rubin Benjamin Scholarship Fund

Established in 2004 in memory of Gerald Benjamin's father, in recognition of his life's commitments — his belief in the value of both competitive sports and higher education. This scholarship will assist a SUNY New Paltz student/athlete from Rubin Benjamin's native city of New York City.

MARKET VALUE: \$14,425

Karen Krause Brody and
Dr. Steven Brody Scholarship

Established through the generosity of Karen and Steve Brody to provide emergency aid to junior or senior students in the College of Liberal Arts and Sciences who are in a sudden financial crisis.

MARKET VALUE: \$12,500

Student Athlete Travel Fund

This fund will provide support to student/athletes with financial need and allow them to participate in team trips.

MARKET VALUE: \$5,976

Everton Henriques
Scholarship Endowment

Purpose to be determined.

MARKET VALUE: \$23,839

Entergy Student Power
Research Endowment

Through the generosity of Entergy, an endowment was created to help support students in the Engineering program.

MARKET VALUE: \$22,000

School of Education Endowment

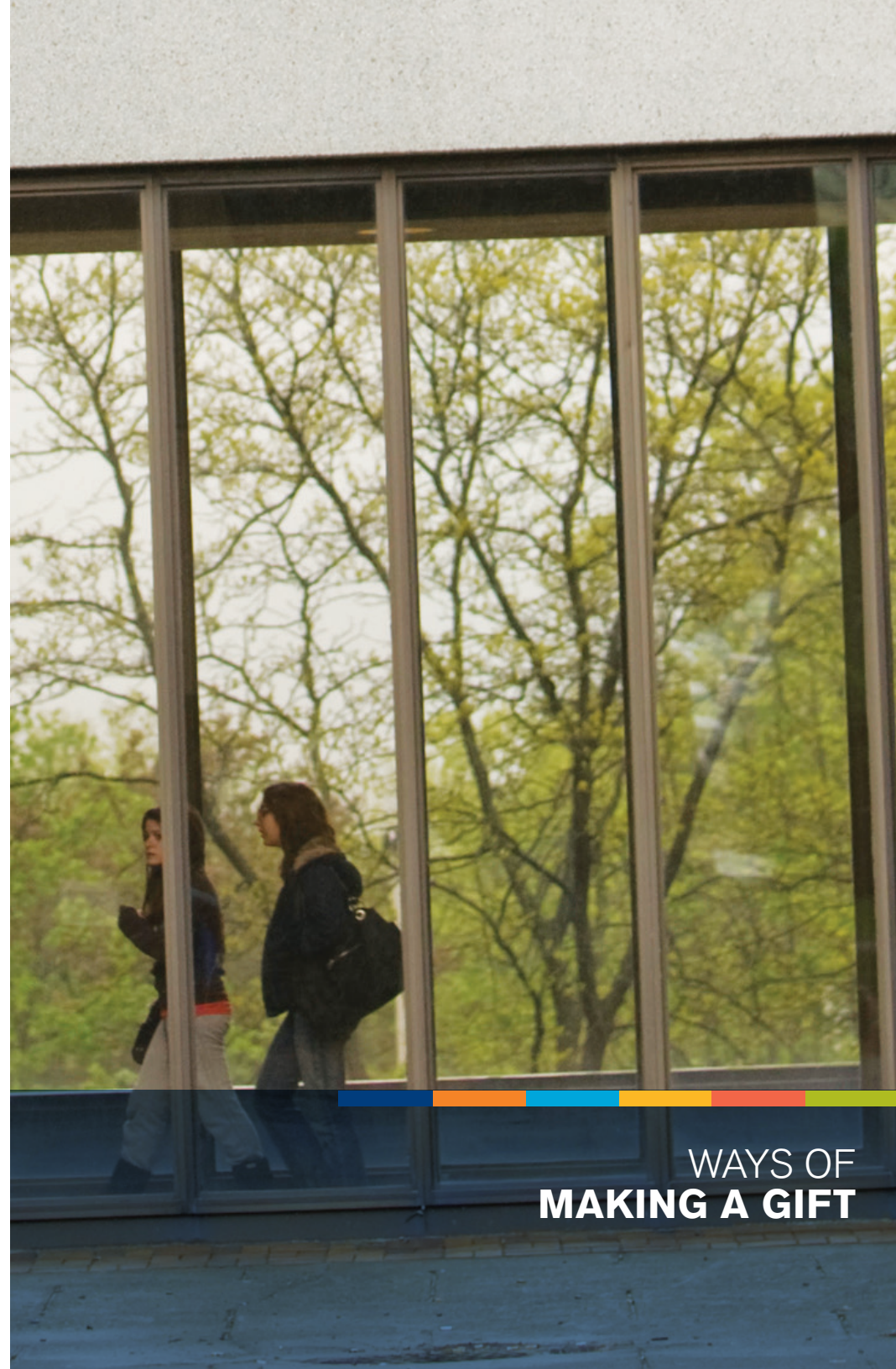
Established in 2006 by the School of Education Advisory Council to assist students with the cost of textbooks at SUNY New Paltz.

MARKET VALUE: \$13,417

Class of '67 Reunion

Established in 1992 through the generosity of alumni from the class of 1967 in honor of their class.

MARKET VALUE: \$22,058



WAYS OF
MAKING A GIFT

WAYS OF MAKING A GIFT

The following suggestions may be helpful to you in planning the size and method of your contribution to SUNY New Paltz.

Any gift is the result of some degree of planning. At the very least, it is the result of a decision on the part of the donor to support an organization. The term “planned giving” is reserved for the many large gifts that involve detailed planning by the donor and his or her attorney, tax accountant or other advisers. Such planning includes a review of the donor’s objectives in making the gift, the various methods available for making the gift, and the effect of the gift on the donor’s financial and estate planning.

Tax laws encourage contributions to nonprofit organizations. But the tax advantages vary with the nature of the gift and with your financial circumstances. Although tax savings to you or your estate are not usually the primary reason for making a philanthropic contribution, they can be a factor in determining the amount of your gift and the method of payment. This is why we urge you to consult with your financial advisers. We welcome the opportunity to work with you and your advisers in such planning.

DESIGNATING YOUR GIFT

A major challenge in the financing of nonprofit organizations in America is the lack of discretionary and contingency funds. Accordingly, the gifts most highly prized are those that allow SUNY New Paltz the flexibility to use them to address its highest priority objectives. Such unrestricted gifts enable the College to quickly address unexpected challenges or to capitalize on unanticipated opportunities. Donors who invest in the College by making unrestricted gifts are assured that their funds will be put to the best possible use. Donor interests are always a primary consideration in the use of gifts. Support for all purposes is welcomed. The staff of the Office of Development & Alumni Relations will be happy to talk with you about any gifts you have in mind, including planned gifts. There are two basic ways to give—current gifts and deferred gifts.

Current gifts are funds that the College can use now. Deferred gifts are funds committed now but not available to the College until sometime in the future. There are a number of options to fund your gifts under both the current and deferred gift categories.

CURRENT GIFTS

Cash

The most common type of gift takes the form of cash, money order or check. Cash contributions qualify for a charitable deduction in the year given and are limited to 50 percent of your adjusted gross income annually. Any amount given over the 50-percent limit is eligible for a five-year carryover.

Gifts Other Than Cash

Gifts may be made in all forms of property other than cash. Gifts of property (e.g., securities, real property and personal property) are usually deductible at their fair value when given, not at the original cost to the donor. As the deduction is based on worth, not cost, this type of gift is very popular. If the claimed value of a gift is \$5,000 or greater, you must obtain an appraisal from a qualified source in order to claim a deduction. Even if the value does not exceed \$5,000, you must keep written records regarding the property.

Appreciated gifts of property are subject to a limit of 30 percent of an individual donor's adjusted gross income, instead of the 50-percent limit that applies to cash contributions. To qualify for the 50-percent limit in this case, you must elect not to claim a deduction for the appreciation. For gifts of appreciated property after Dec. 31, 1986, a tax preference item is generated. The majority of people are not affected by the alternative minimum tax, but if you think you may be, you should discuss the tax effect of the gift with your tax adviser.

Securities

Gifts may be in the form of common stock or other securities, including closely held corporate stock, bonds, limited partnership interests and mutual fund shares—especially those which have appreciated in value. In an exception to the above rules, publicly traded securities do not have to be appraised. If the securities are not publicly traded and the value is more than \$5,000, but less than \$10,000, you do not have to obtain an appraisal. However, a partially completed appraisal summary form must be attached to the tax return on which the deduction is claimed.

Real Property

Gifts of real property may include farms, personal residences and vacation homes, as well as commercial and rental properties. One attractive option for some is to donate your personal residence or farm, while retaining the right to live there for the rest of your life. The financial advantages of such life tenancy agreements vary according to the manner in which the gift is structured.

Tangible Personal Property

Gifts of tangible personal property may consist of furniture, equipment, books, gems, precious metals, art, stamps, coins, fixtures, automobiles, manuscripts or nearly any kind of property. Such gifts are often designated for an appropriate use within the College.

Charitable Lead Trust

This is the mirror image of a charitable remainder trust. (*See Page 40.*) Rather than paying an income to the beneficiary, with remaining assets going to College, the charitable lead trust pays an income to the College currently with remaining assets either reverting to you or being paid to an individual designated by you at the end of a specified period. A charitable lead trust may be advantageous to a donor who would like to reduce current taxable income, yet retain ultimate ownership of the property.

Life Insurance

Certain gifts of life insurance, such as a gift of a paid-up policy, may be considered as current, rather than deferred gifts. A gift of a life insurance policy is made by delivering and assigning ownership of the policy to the College. When you make an outright gift of a paid-up life insurance policy and name New Paltz as the irrevocable owner and beneficiary, you may claim an immediate tax deduction equal to the replacement value of the policy.

You may also contribute life insurance policies that are partially paid up and claim an immediate tax deduction equal to the cash surrender value of the policy. You may even purchase and support a new policy naming the College as the irrevocable owner and beneficiary. In this case, an immediate tax deduction can be claimed for the premium payments made.

DEFERRED GIFTS

The deferred gift is one that can be created now through an estate plan, yet the College's full interest in the gift would not be received until some point in the future. An example of a deferred gift would be a bequest established today by the execution of a will or trust. All of the current gift options described above can be used to fund deferred gifts as well.

Life Income Trusts

There are three types of giving that permit you to retain a lifetime income from cash or property transferred to the College and also to realize current income tax benefits.

Charitable Gift Annuity

A charitable gift annuity is a contract between the donor(s) and the College whereby donor(s) contribute cash or other valuable property in exchange for a specified amount paid at a stated frequency for life. The charitable gift annuity can be an immediate annuity with payments beginning immediately following the gift, or it can be a deferred annuity with payments beginning at a designated future time. The deferred annuity can be a valuable part of retirement planning.

Charitable Remainder Annuity Trust and Unitrust

These trusts provide that the donor or other named beneficiary receive an income from the trust. Title to the trust assets passes to the College upon the death of the last named beneficiary. Charitable remainder trusts may be structured in one of two ways. If a fixed income is desired, the trust can be structured as an annuity, paying a specified dollar amount at stated intervals. Alternatively, as a hedge against inflation, the trust can be structured to pay a fixed percentage of the trust's assets, which are re-valued annually. In this way, the beneficiary's income grows as the value of the trust property grows.

Life Insurance

Gifts of life insurance provide a way to make a sizable gift at a relatively low cost. Simply name the College as a primary beneficiary of the policy upon the death of the insured.

Bequests

A bequest is a written direction contained in a will or a trust that disposes of some or all of the property controlled by the document. Through this method, it is possible to give cash, securities, life insurance proceeds, and real and personal property. It is also possible to create a trust through a will. Bequests may be used to establish memorials in honor of the donor, family members or others.

Plan Your Own Program

In addition to the gift methods discussed above, there are other ways to give that, although not exclusively charitable in nature, do have important charitable gift applications. Some will be more appropriate for you than others. The best way for you to give is the method that best achieves your objectives and is, at the same time, consistent with the interests and needs of the College. We suggest that you meet with your financial or legal advisers and call upon the assistance of our Development Professionals who will be pleased to help you plan your gift.

For more information, contact the Office of Development at 845.257.3238.

INDEX

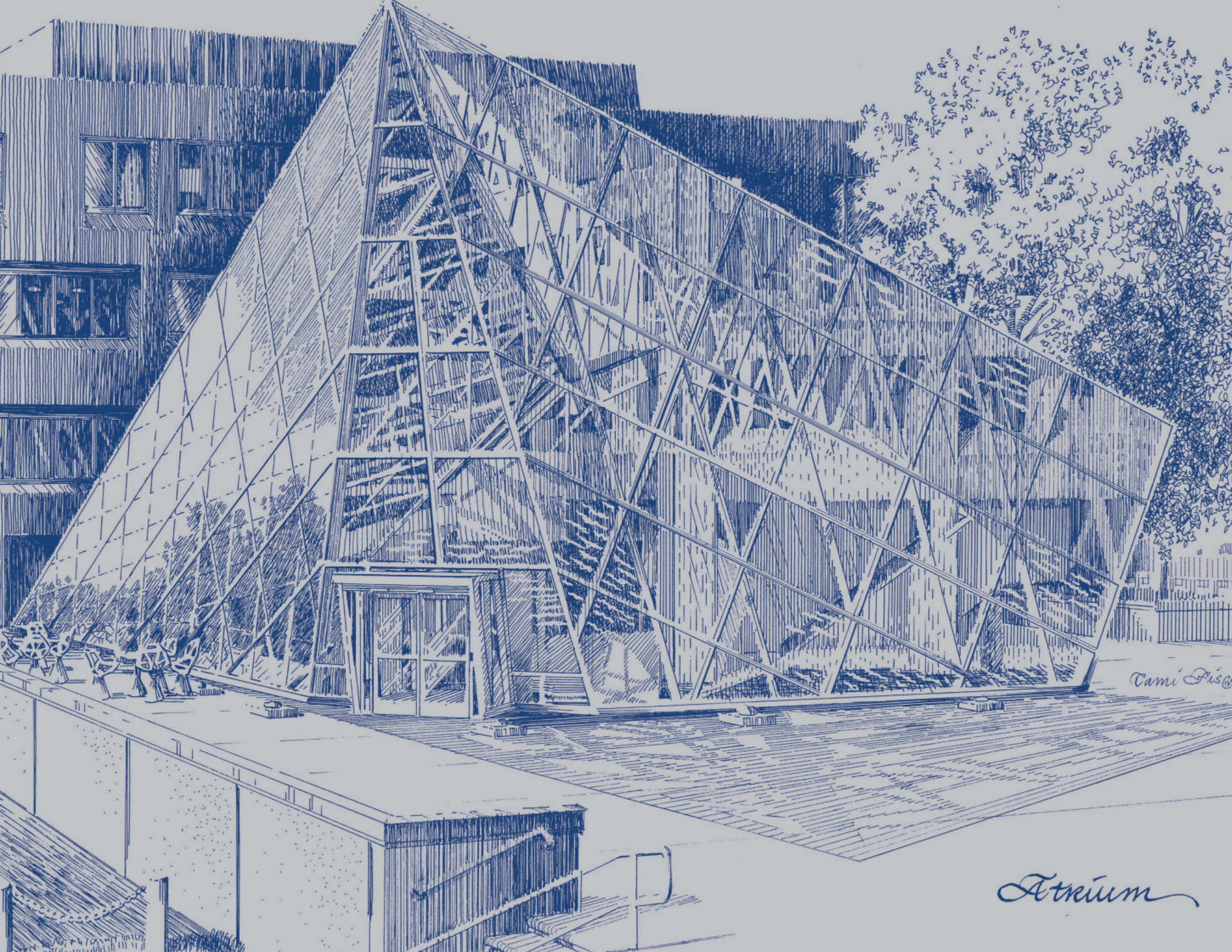
Arethusa Alumnae Endowment	26
Morgan Anderson Endowment.....	18
Aratowsky, Bernard Memorial Scholarship.....	8
Asian Studies, Friends of the Endowment.....	9
Badalucco, Joe & Jean Outstanding Achievement Theatre Scholar.....	18
Baggerman Family Scholarship.....	14
Basch, Eli & Susan DASES Scholarship	26
Bates, “Peg Leg” Memorial Scholarship	26
Bedrick, Sara Endowment.....	18
Benjamin, Rubin Scholarship Fund.....	34
Bennett, Arthur Bruce Drama Scholarship.....	18
Bennett, Ruth Art Scholarship Endowment	18
Bishko, Donald Memorial Scholarship	12
Bowen, Roger & Barbara Scholarship Endowment.....	8
Brody, Karen Krause & Dr. Steven Scholarship.....	34
Burke, Mary Gallagher Scholarship.....	15
Cahill, Francis X. Endowment.....	27
Campion, Dr. James Memorial Scholarship.....	22
CAS Golf Tournament Endowed Scholarship	27
CAS Pepsi Endowed Scholarship	27
Celebrating New Paltz Gala Scholarship Endowment	27
Celebrating New Paltz Regional Scholarship	27
Chandler, Alice & Horace Art Acquisition Endowment Fund.....	19
Class of '47 Scholarship.....	14
Class of '67 Reunion	34
Cleverley, Russell S. Memorial Fellowship Endowment.....	8
Clionian Alumni Scholarship	14
Cox, Matilda Scholarship Endowment	14
Crossing the Finish Line Endowment.....	28

Davenport, Kenneth Endowment	19
Delgado, Lucy DASES Scholarship	28
DeRoberts, Ruth & Raymond Memorial Scholarship	28
Dorsky Museum Endowment.....	19
Doty, Jean M. & Howard A. Mathematics Scholarship.....	22
Durkin, Robert Memorial Scholarship	28
Eckelt, Frank & Gertrude Education Administration Scholarship	15
Eckelt, Frank & Gertrude Fine Arts Memorial Scholarship.....	19
Eisenberg, Leonard Scholarship Fund.....	9
Elliot, Frank G. Scholarship	28
Elliott, Gertrude M. Scholarship	15
Entergy Student Power Research Endowment	34
Faculty Development Endowment.....	29
Farber, Trudy Resnick Memorial Scholarship.....	29
Fitzgerald, John L. & Jeanne L. Memorial Scholarship	19
Fleet Bank Endowed Scholarship.....	29
Fredricks, Jim Endowment	29
Fredricks, Jim CAS Student Employee Scholarship	29
Geider, Barbara Endowed Scholarship	30
Geng, Sean Memorial Scholarship.....	12
Gluckman, Simon & Evelyn Crawford Scholarship.....	27
Greenberg, Howard Endowment	19
Harding, Marion Scholarship.....	19
Hauber, William Scholarship.....	9
Havens, Ruth Mack Scholarship.....	15
Healey, Susan B. (Sposato) Endowed Scholarship.....	30
Heinz, Freda '30 Memorial Scholarship.....	30
Henriques, Everton Scholarship Endowment	34
Henriques, Ronald F. and Flona J. Memorial Scholarship	15

Irvine, William J. & Nancy Jean Scholarship	23
Jankiewicz, John L. Memorial Scholarship	23
Kochant, William and Helen Writing Scholarship	15
Kuykendall, Eleanor Endowed Lecture Series.....	9
Lent, Arnold Memorial Endowment.....	30
Lyons, Betty The Memorial Scholarship	16
Matteson Lecture Series.....	16
Murphy, Paul F. Scholarship.....	30
New Paltz Art History Alumni Lecture	20
Oakley, Leslie Memorial Scholarship	16
Ordway, Richard Memorial Endowment	9
Orenstein DASES Scholarship.....	30
Ottaway, James & Mary Hudson River Catalog.....	20
Ottaway, James H. Sr. Visiting Professorship in Journalism	10
Palladino, Joan Endowed Scholarship Fund	31
Patrik, Gary & Janaki Music Endowment	20
Patsis, Angelos V. Memorial Scholarship	34
Piano Summer Endowment	20
Recruitment Scholarship Endowment.....	31
Resnick Engineering	23
Resnick, Joseph Y. Scholarship.....	31
Resnick, Mildred & Louis Jewish Life Lecture	10
Resnick, Mildred & Louis Scholarship Fund.....	31
Santora, Olga Scholarship Endowment.....	16
Santoro, Thomas Memorial Scholarship	23
School of Business Endowment.....	12
School of Business Trading Room & Technology Endowment.....	12
School of Education Endowment.....	34
Smolen Observatory Endowment	23

Stokes, Linda A. & Thomas P. Memorial Scholarship.....	20
Student Athlete Travel Fund.....	34
SUNY New Paltz Legacy Scholarship Endowment.....	31
Trager, Neil C. Director's Endowment	20
Traverso, Luigi & Anita Endowment for Italian Studies.....	10
Truth, Sojourner Undergraduate Scholarship Fund	31
Wade-Lewis, Dr. Margaret Memorial MRP Scholarship	32

For more information, please contact the Office of Development
at 845.257.3240 or www.newpaltz.edu and click *Give Today*.



Cami Fisco

Atrium

