



▶ HOME AWAY FROM HOME!

○ Issue 2

○ Fall 2011



▶ COMMUNITY FOR YOU!



▶ BOOKS REALLY HEAVY? SICK AND TIRED OF HAVING TO GO BACK AND FORTH FROM THE CAR TO GET YOUR STUFF?

COMMUTER FOCUS



The Student Union's purpose is to serve as a **P.L.A.C.E** for students of both commuters and residents.

- Play
- Learn
- Ask
- Convene
- Eat

However, this is the HOME away from HOME for commuters. With the many improvements, there is so much to do here at the Union! There are brand new equipment tables, new food services, new computers, and programs going on at all times of the day! The Student Union is the hearthstone of our campus. It is the only building on campus that is for the students, by the students, with the students. It creates a common space for everyone enrolled at New Paltz to engage and reflect during their time here.

HOURS OF OPERATION

Monday-Friday: 7:30 AM - 12:00 AM
Saturday-Sunday: 9:00 AM - 12:00 AM



Student Activities & Union Services



Want to know more about events going on campus? Join the Off Campus commuter Facebook page!

<https://www.facebook.com/pages/SUNY-New-Paltz-Off-Campus-Students/148172945267062>




Office of Student Activities and Union Services

For questions or for special needs, please contact us:
Student Union 211 • 845-257-3025 • sub@newpaltz.edu

STUDENT SHOUTOUT...WHAT'S GOING ON??

New Paltz Solar Car meetings are held every Tuesday at 3pm in Resnick Engineering Hall (REH) 109, and new members from all majors are welcome and encouraged to join!

Asian Students Association
GI/weekly meetings.
Tuesdays at 8pm in SUB 402.



Volunteer Fair
September 20th from
11-3 in the Student
Union MPR !

Urban Lyrics.
We are going to be holding our GI meeting for our Urban Spoken Word Team on Monday September 19th 6-8pm in SUB 401/405 and then auditions will be Monday September 26th 6-8pm in SUB 401/405.

We hope everyone is having a great first few weeks of school! The Muslim Student Association is holding General Interest Meetings every Monday at 6:30 pm in SUB 408.

Everyone is welcome to attend. We will discuss various events that we are planning on doing throughout the semester. All suggestions are welcome.

Thank you very much and hope to see you all there!

The SUNY New Paltz Up 'til Dawn student Executive Board would like to invite you to participate in our exciting Up 'til Dawn fundraising event benefiting St. Jude Children's Research Hospital. The Annual Up 'til Dawn Event will be held October 5, 2011 from 7pm to 11pm at SUNY New Paltz

Student Union MPR. More than 300 students, parents, and faculty are expected to participate in this event packed with fun events and most importantly, raising money for the children of St. Jude. St. Jude Children's Research Hospital is internationally recognized for its pioneering work in finding cures and saving children with cancer and other catastrophic diseases. St. Jude shares its research findings freely and families without insurance are never asked to pay. Hope to see you all there :)!

Co-President-Julia Spellman

Hey Commuters! Come check out New Paltz's Ultimate Frisbee Team!

GUNX PRACTICE SCHEDULE

	Monday	Tuesday	Wednesday	Thursday	Friday
Coed		4:30-6pm South Lawn†			4:30-6pm South Lawn†
Men	5-6:30pm Rec West*		4:30-6pm Rec West*		
Women			4:30-6pm South Lawn†	4:30-6pm Rec West*	

*Rec West is the field behind the turf/track.

†South Lawn is the field to the left of the gym.

MEET STUDENT ACTIVITIES AND UNION SERVICES



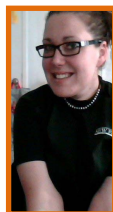
Mike Patterson
Director of Student
Activities and
Union
Services



Naomi Vogt
Keyboard Specialist
of Student Activities
and Union Services



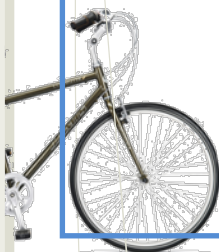
Brendan O'Brien
Event Coordinator
of Student Activities
and Union Services



Nicole Shanahan
Graduate Assistant of
Student Activities
and Union Services



Emily Spilman
Assistant Director of Student Activities and Union
Services



A NOTE FROM TARA

Welcome to New Paltz First-Year Commuters!

I hope you're enjoying your classes and adapting well to your new college schedule. As a reminder, you can look forward to receiving announcements throughout the academic year from the Commuter Assistants as well as from your Orientation Leader and from me as well. In addition to commuter related activities, I'll be in contact with you about upcoming First-Year Friday and Saturday Nights @ the Terrace events. You can find the schedule of events online at www.newpaltz.edu/keepingyouposted.

See you around campus & have a wonderful fall semester!

Tara Sestanovich
Coordinator of First-Year Programming
sestanot@newpaltz.edu



RENT A LOCKER!

Lockers are available to students for \$10.00 a semester with a \$10.00 deposit. The Office of Student Activities and Union Services will start taking reservations on **August 2nd, 2011**. After you are done with the locker, whether you rent for the semester or year, you receive your deposit back, given there is no damage to the locker itself. The lockers are located in the lower level of the atrium close to the gaming equipment and bookstore. This is a great way for the commuter to have a place of their own in the Union. With renting a locker you won't have to haul around heavy books, winter jackets, boots, or any "stuff" you don't need throughout the day. If you are interested feel free to contact Nicole Shanahan in SU 211 or call 257.3025

COMMUNITY FOR YOU!



NEW PALTZ UNWTRAPPED

Tuesday, September 27th
3pm-4pm
Student Union 418

COMMUTER DINNER PARTY

Monday, September 19th
5pm-6pm
Student Union 418

SPIRIT WEEKEND
September 23-25th
ALL WEEKEND!

Fun, Games and more!
Crispell Hall 8pm on Friday!

OUT OF THIS WORLD
 FALL 2011 STUDENT ACTIVITIES AND UNION SERVICES CALENDAR OF EVENTS

<p>Tuesday, August 23rd GETTING TO KNOW NEW PALTZ BUSINESS FAIR 2:30 pm - Student Union 2nd Floor Courtyard (All other Student Union 418)</p> <p>PLATES OF THE CABBAGIAN: ON STRANGERS TOES 8 pm, Porter Quad (All other Student Union 418)</p> <p>Wednesday, August 24th OWEN EKBLADGE NIGHT 7 pm-10 pm, Student Union Entertainment Commons</p> <p>Sunday, August 28th JOSHUA SMITH - THE ROCKETMAN OF COMEDY HORRORS 8 pm, Student Union 418</p> <p>Tuesday, August 30th COMMUTER LUNCHEON 12 pm-1 pm, Student Union 418</p> <p>Wednesday, August 31st WOODS-SILVER - JAP FAIR 11:00 am-1:00 pm, Student Union 418 (Hosted by the Office of Financial Aid)</p> <p>Thursday, September 1st MAKE YOUR OWN LICENSE PLATE! 11 am-2 pm, Student Union 418 Pro-Fraction Space (Space is limited)</p> <p>Evening Lectures Information Session 5:30 pm, Student Union 418</p> <p>Friday, September 2nd LYING ON CAMPUS 101 7 pm-9 pm, Student Union 418</p> <p>Evening Lectures Information Session 5:30 pm, Student Union 418</p> <p>Saturday, September 3rd SLURRY HOP CONTEST 8 pm, Student Union 418</p>	<p>Friday, September 9th FALL ACTIVITIES FAIR 11 am-2 pm, Student Union 2nd Floor Courtyard</p> <p>Event Night! 8 pm, Student Union 418</p> <p>Friday, September 16th EVENT PLANNING 101 WORKSHOP 2 pm, Student Union 418</p> <p>Tuesday, September 20th INSTRUMENTAL GUITAR SLAYERS DONIC GAUDIOS 11 am-1 pm, Student Union Entertainment Commons</p> <p>Wednesday, September 21st SNAKES ALIVE! 11 am-2 pm, Student Union 418 Pro-Fraction Space</p> <p>Sunday, September 25th ANKLE DIPPING 10:00 am-1:00 pm Look for 1000 lbs. of meat!</p> <p>Monday, September 26th MAKE YOUR OWN BANNER! 12 pm-3 pm, Student Union Lounge 100 North</p> <p>Hung Prevention Week Begins Wednesday, October 19th</p> <p>VIDEO GAME DAY 11 am-2 pm, Student Union 418</p> <p>Thursday, October 20th THE MATCH EXHAUST 5 pm, Student Union 418</p> <p>Friday, October 14th MAKING THE MOST OF YOUR STUDENT LEADERSHIP COMMERCIAL WORKSHOP 2 pm, Student Union 418</p> <p>Sunday, October 16th ELECTRONIC ASTROLOGUES 11 am-2 pm, Student Union 418 Pro-Fraction Space Student ID Required</p>	<p>Friday, October 21st MAKE A DIFFERENCE DAY COLLECTION DRIVE 11 am-2 pm, Student Union 418/104 & Humanities 105</p> <p>Sunday, October 23rd MAKE A DIFFERENCE DAY COMPANY SERVICE Sports League at 10:00 am, Student Union Lounge 100 (Pre-Registration Required at 9:00 am, also look for basketball)</p> <p>Friday, November 11th COMEDY NIGHT WITH STEVE BIANCHI 8 pm, Student Union 418 Tickets are FREE and Free-will Tickets available starting October 1st to 10/21/11</p> <p>Monday, November 14th NAME ALMANAC 11 am-2 pm, Student Union 418 Pro-Fraction Space</p> <p>Monday, November 14th SNAKES ALIVE NIGHT 8 pm, Student Union 418</p> <p>RECURRING EVENTS</p> <p>LIVE NIGHT AT THE UNION 10:00 pm-12:00 am, Student Union Entertainment Commons The first Friday of every month! Look for live games and exciting activities! September 2nd, October 7th, November 4th & December 1st</p> <p>STUDENT NIGHTS AT THE TERRACE Every Saturday Night throughout the semester Doors open at 8 pm, with events beginning at 9:30 pm</p> <p><small>All events are FREE unless otherwise noted. Student ID is required for all events. Events are subject to change. For questions or special needs, please contact the Office of Student Activities and Union Services (607) 525-2025, ext. 200 or Student Union 211 or via email at studentactivities@newpaltz.edu. Activities are funded by SAS and PEC Grants provided by CAS.</small></p> <p>New Paltz STATE UNIVERSITY OF NEW YORK</p>
---	--	--



RIDDLE OF THE MONTH!

Complete this sequence of letters: o, t, t, f, f, s, s, __, __, __.

***The first 5 students who email me with the correct answer will be entered into a raffle!*

Nshanahan08@newpaltz.edu

WANT TO HEAR ABOUT ALL THE FUN ON CAMPUS!?

Student Activities is able to contact you via blackboard on the commuter listserv! Important information about events and activities pertaining to the off campus population are sent through this! Also, the NP Alert system is available and provides students an opportunity to have notifications of events sent to their phone and/or email.

Groups available:

- **New Paltz Student Activities:** Occasional text messages will be sent to you promoting select events on campus
- **Off-Campus/Commuter Students:** The Office of Student Activities and Union Services will use this group to send updates for off-campus students for things such as: Commuter Appreciation Days, Off-Campus Student Socials, Off-Campus Student Union events and promotion, Commuter Locker Rentals and PROGRAMMING!

Directions for NPAlert:

1. Login to <http://my.newpaltz.edu>
2. Go to Student Services tab
3. In the NP Alert channel: Follow the link to login to manage your account. On the NP Alert/Rave Wireless page, login on the top left side with the same username and password you used to login to my.newpaltz.edu.